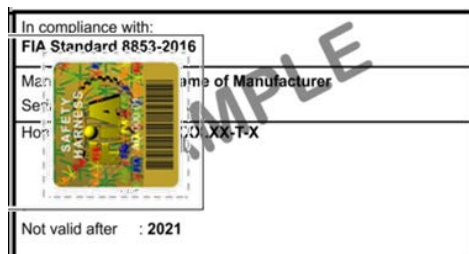


**HARNAIS HOMOLOGUES PAR LA FIA SELON LA NORME FIA 8853-2016
HARNESSES HOMOLOGATED BY THE FIA ACCORDING TO THE FIA STANDARD 8853-2016**

LISTE TECHNIQUE N° 57 / TECHNICAL LIST N° 57



👉 [EN CLIQUANT ICI, VOUS POUVEZ TELECHARGER TOUTES LES FICHES DE PRESENTATION:](#)

👉 [IF YOU CLICK HERE, YOU CAN DOWNLOAD ALL THE PRESENTATION FORMS:](#)

Homologation / Homologation							Harnais valide jusqu'au ⁽¹⁾ Harness valid until ⁽¹⁾
Numéro homologation Homologation number	Nom commercial Commercial name	Nbre fixations (extrémités sangles) Nb of attachments (strap end-fittings)	Boucle Buckle	Constructeur Manufacturer	Début Beginning	Fin End	
SH.001.16-T-6	NEW SPEC SALOON	6	T	SABELT	Oct-16	Oct-21	Dec-26
SH.002.16-T-6	SPORT	6	T	TAIWAN BIKE RACK (TBRACING)	Nov-16	Nov-21	Dec-26
SH.003.16-T-6	F1 S 2016	6	T	SABELT	Nov-16	Nov-21	Dec-26
SH.004.16-T-6	SALOON 2016	6	T	TWR	Dec-16	Dec-21	Dec-26
SH.005.16-T-6	04818RH	6	T	SPARCO	Dec-16	Dec-21	Dec-26
SH.006.16-T-6	E1	6	T	SABELT	Dec-16	Dec-21	Dec-26
SH.007.16-T-6	PROFI 2X2	6	T	SCHROTH	Dec-16	Dec-21	Dec-26
SH.008.17-T-8	F1 S8 2017	8	T	SABELT	Feb-17	Feb-22	Dec-27
SH.009.17-T-6	DA0101	6	T	OMP	Mar-17	Mar-22	Dec-27
SH.010.17-T-6	E2P	6	T	SABELT	Apr-17	Apr-22	Dec-27
SH.011.17-T-6	RCU-1001H	6	T	TAIWAN RACING PRODUCTS	Apr-17	Apr-22	Dec-27
SH.012.17-T-6	DA0202	6	T	OMP	May-17	May-22	Dec-27
SH.013.17-T-6	FORMULA 2x2	6	T	SCHROTH	May-17	May-22	Dec-27
SH.014.17-T-6	T-BAR 2x2	6	T	SCHROTH	Aug-17	Aug-22	Dec-27
SH.015.17-T-6	ENDURO 2x2	6	T	SCHROTH	Aug-17	Aug-22	Dec-27
SH.016.17-T-6	QRH336	6	T	QSP PRODUCTS	Sep-17	Sep-22	Dec-27
SH.017.17-T-6	04819H	6	T	SPARCO	Sep-17	Sep-22	Dec-27

(1) The validity of the product must always be that which is indicated on the product homologation label. The dates in this column are the latest possible dates that can be shown on the homologation label.

Homologation / Homologation							Harnais valide jusqu'au ⁽¹⁾ Harness valid until ⁽¹⁾
Numéro homologation <i>Homologation number</i>	Nom commercial <i>Commercial name</i>	Nbre fixations (extrémités sangles) <i>Nb of attachments (strap end-fittings)</i>	Boucle <i>Buckle</i>	Constructeur <i>Manufacturer</i>	Début <i>Beginning</i>	Fin <i>End</i>	
SH.018.17-T-6	DA0104	6	T	OMP	Sep-17	Sep-22	Dec-27
SH.019.17-T-6	04821H	6	T	SPARCO	Sep-17	Sep-22	Dec-27
SH.020.17-T-6	CLUBMAN 3x2	6	T	SCHROTH	Oct-17	Oct-22	Dec-27
SH.021.17-T-6	PROFI 2x2 – GEN II	6	T	SCHROTH	Oct-17	Oct-22	Dec-27
SH.022.17-T-6	ENDURO 3x2	6	T	SCHROTH	Oct-17	Oct-22	Dec-27
SH.023.17-T-6	PROFI 3x3	6	T	SCHROTH	Oct-17	Oct-22	Dec-27
SH.024.17-T-6	RCU-1002H	6	T	TAIWAN RACING PRODUCTS	Oct-17	Oct-22	Dec-27
SH.025.17-T-6	DA0102	6	T	OMP	Oct-17	Oct-22	Dec-27
SH.026.17-T-6	DA0203	6	T	OMP	Oct-17	Oct-22	Dec-27
SH.027.17-T-6	RACE 2x2	6	T	TAKATA	Oct-17	Oct-22	Dec-27
SH.028.17-T-6	40100514	6	T	MCF	Oct-17	Oct-22	Dec-27
SH.029.17-T-6	40100494	6	T	MCF	Oct-17	Oct-22	Dec-27
SH.030.17-T-6	T-BAR 3x2	6	T	SCHROTH	Nov-17	Nov-22	Dec-27
SH.031.17-T-6	NEW SPEC S3	6	T	SABELT	Nov-17	Nov-22	Dec-27
SH.032.17-T-6	RCU-1003	6	T	TAIWAN RACING PRODUCTS	Nov-17	Nov-22	Dec-27
SH.033.17-T-6	NEW SPEC F2	6	T	SABELT	Dec-17	Dec-22	Dec-27
SH.034.17-T-6	RACE 3x2	6	T	TAKATA	Dec-17	Dec-22	Dec-27
SH.035.17-T-6	QRH536	6	T	QSP PRODUCTS	Dec-17	Dec-22	Dec-27
SH.036.17-T-6	DA0204	6	T	OMP	Dec-17	Dec-22	Dec-27
SH.037.17-T-6	DA0206	6	T	OMP	Dec-17	Dec-22	Dec-27
SH.038.18-T-6	MAGNUM SALOON ULTRALITE	6	T	TRS	Feb-18	Feb-23	Dec-28
SH.039.18-T-6	QR336	6	T	QSP PRODUCTS	Feb-18	Feb-23	Dec-28
SH.040.18-T-6	HPRH-6102	6	T	HPI Co. Ltd.	Apr-18	Apr-23	Dec-28
SH.041.18-T-6	HPRH-6103	6	T	HPI Co. Ltd.	Apr-18	Apr-23	Dec-28
SH.042.18-T-6	RCU-1004	6	T	TAIWAN RACING PRODUCTS	Apr-18	Apr-23	Dec-28
SH.043.18-T-6	RCU-1005	6	T	TAIWAN RACING PRODUCTS	May-18	May-23	Dec-28
SH.044.18-T-6	S-3036-U	6	T	CORBEAU	June-18	June-23	Dec-28
SH.045.18-T-6	F-2026-U	6	T	CORBEAU	June-18	June-23	Dec-28
SH.046.18-T-6	H-2026-U	6	T	CORBEAU	June-18	June-23	Dec-28
SH.047.18-T-6	NEW SPEC F3	6	T	SABELT	July-18	July-23	Dec-28

(1) The validity of the product must always be that which is indicated on the product homologation label. The dates in this column are the latest possible dates that can be shown on the homologation label.

(1) The validity of the product must always be that which is indicated on the product homologation label. The dates in this column are the latest possible dates that can be shown on the homologation label.