



# extreme

www.spa-uk.co.uk tel. +44 (0) 1543 434580



# extreme

www.spa-uk.co.uk tel. +44 (0) 1543 434580

Models covered SPAEX2.0-M & SPAEX2.25-M

## INSTALLATION INSTRUCTIONS

FIA Homologation EX.039.16 & EX.049.18

**Please read carefully before  
attempting to install  
your system.**



The Mill House, Tamworth Road, Packington Hayes  
Nr Lichfield, Staffordshire, England, WS14 9PN  
Tel: 01543 434580 Fax: 01543 434581  
Email: sales@spa-uk.co.uk  
Website: www.spa-uk.co.uk





Thank you for purchasing one of our latest range of Homologated systems . This manual covers the following systems SPAEX2.0-M (Saloon & Sports cars) & SPAEX2.25-M (Single Seaters only).

It is important that you read the following instructions carefully before attempting to install your fire suppression systems.

The performance of these systems could be affected if they are in any way modified or tampered with and will void its homologation. Please ensure you only use genuine SPA parts should any part need replacing. Should you require assistance with this please call +44(0)1543 434580

Index	Pages
System contents	1-2
Engine bay/Cockpit nozzle locations	3-6
System layout	7-8
Lever valve assembly	9
Mechanical system fitting instructions	10
Tubing maintenance	11
Suppression data sheets	12

## CONTENTS

### SPAeX2.0M SYSTEM CONTENTS LIST

1 X SP147	5" MECHNICAL STRAPS
1 X SP 017	E LOCATION STICKER LARGE
1 X SP 0129	E LOCATION STICKER SMALL
4.5 X SP 015	6MM DECABON HOSE PER METER
2.5 X SP 032	8MM DECABON HOSE PER METER
1 X SP 072	10MM DECABON HOSE PER METER
0.5 X SP 181	12MM DECABON HOSE PER METER
1 X SP 184	8MM-6MM Y PIECE
1 X SP 183	10MM-8MM Y PIECE
1 X SP 182	12MM-10MM Y PIECE
1 X SP185	10MM BULKHEAD FITTING
1 X SP 186	10MM-8MM REDUCER
2 X SP 187	ENGINE BAY NOZZLES
2 X SP 188	COCKPIT NOZZLES

CONTENTS

SPAEX2.25-M

1 X SP147

1 X SP319

1 X SP 017

1 X SP 0129

4.5 X SP 032

2.5 X SP 072

0.5 X SP 181

1 X SP 183

1 X SP 182

1 X SP185

1 X SP 186

2 X SP 187

1 X SP 481

SYSTEM CONTENTS LIST

5" MECHNICAL STRAPS

ANTI-TORPEDO MOUNTS

E LOCATION STICKER LARGE

E LOCATION STICKER SMALL

8MM DECABON HOSE PER METER

10MM DECABON HOSE PER METER

12MM DECABON HOSE PER METER

10MM-8MM Y PIECE

12MM-10MM Y PIECE

10MM BULKHEAD FITTING

10MM-8MM REDUCER

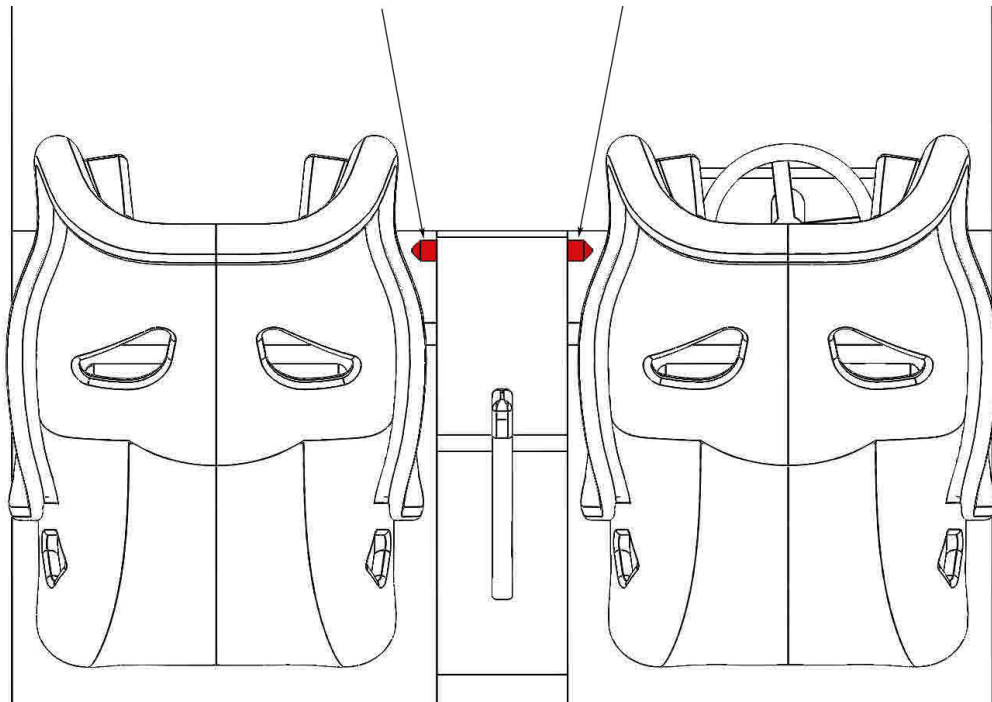
ENGINE BAY NOZZLES

COCKPIT DEFLECTOR NOZZLE

## COCKPIT NOZZLE LOCATION FOR SALOON CARS & SPORTS CARS MODEL SPAEX2.0-M

Two nozzles should be mounted in the cockpit area of a saloon car, we recommend that these are mounted under the dashboard spraying horizontally across the drivers foot-well and co-drivers compartment.

### SALOON & SPORTS CAR NOZZLE POSITIONS



# COCKPIT NOZZLE LOCATION FOR SINGLE SEATERS MODEL SPAEX2.25-M

The SP481 Cockpit nozzle is specially engineered as a fully multi-directional nozzle, this allows you to position the nozzle as shown in figure 1 or figure 2 which will cover the driver and foot-well position.

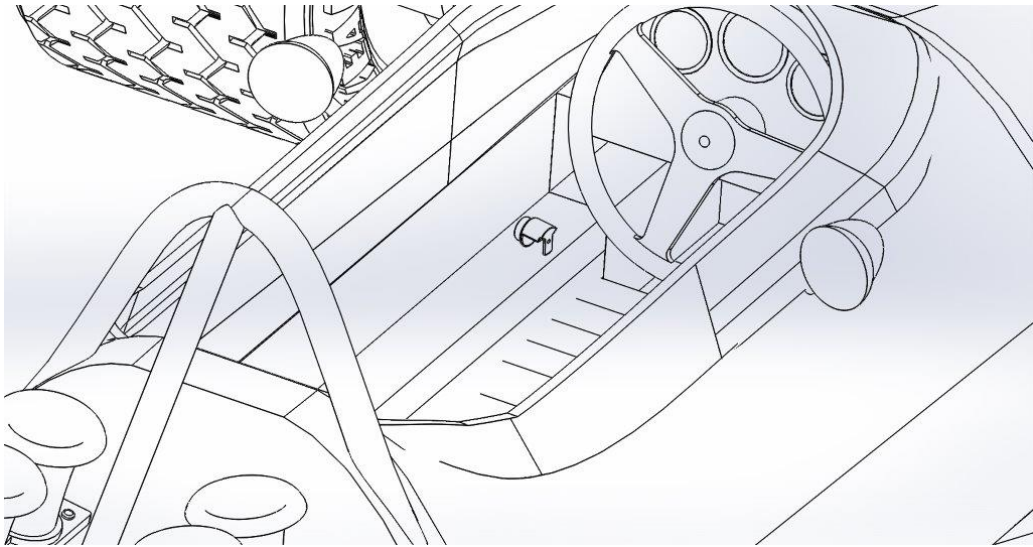


Fig 1

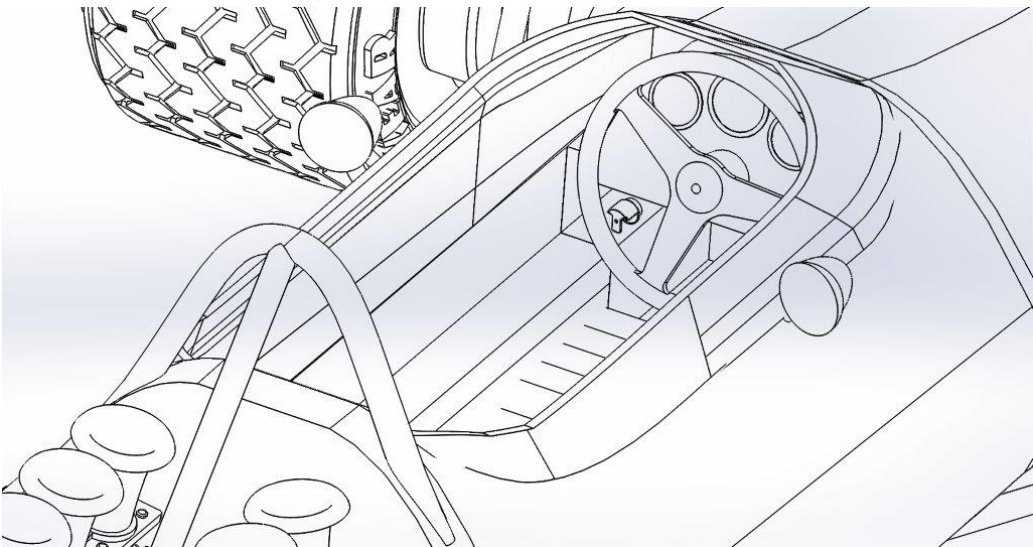
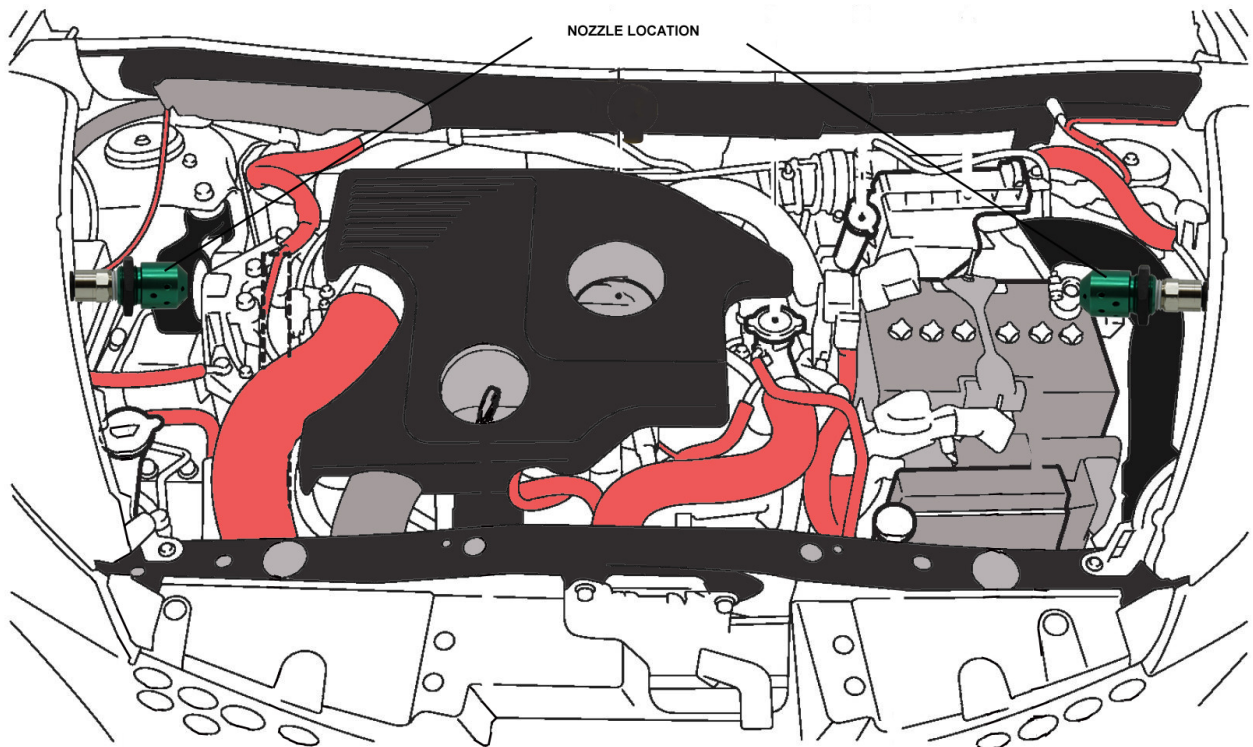


Fig 2

## ENGINE BAY NOZZLE LOCATION SPORTS, SALOON & SINGLE SEATERS

Two nozzles should be mounted in Engine compartment  
fig 1



### TUBING

Each SPA Extreme system is supplied with Decabon tubing which is a coated aluminium tube which can be molded and flexed to suit this application. The SPA Extreme system has been designed using this type of tube. DO NOT substitute this tube for any other type.

## MULTI-DIRECTIONAL NOZZLES

Please note that nozzle shown in Fig.A must only be used in engine bay.  
Nozzle shown in Fig.B must only be used in cockpit.

fig A

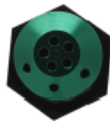


fig B

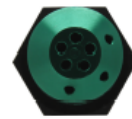


It is important that the correct nozzles supplied with the system are used, the nozzles produce a multi directional spray pattern and must be positioned as shown in Fig A.

fig A



Yes

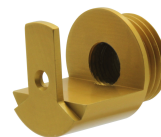


No

Cockpit Nozzle orientation for system model SPAEX2.25-M Single seater Cars only



Yes



No



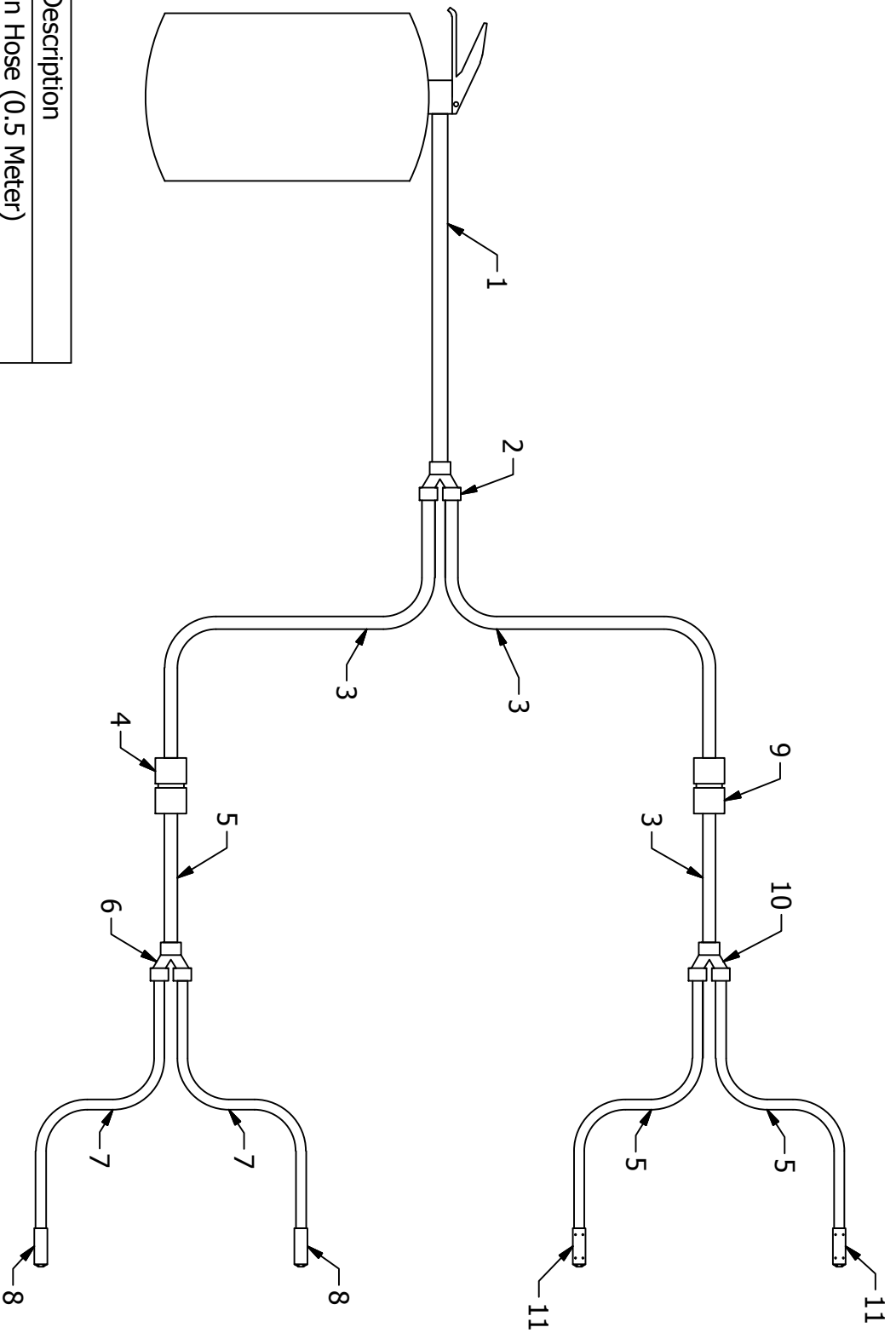
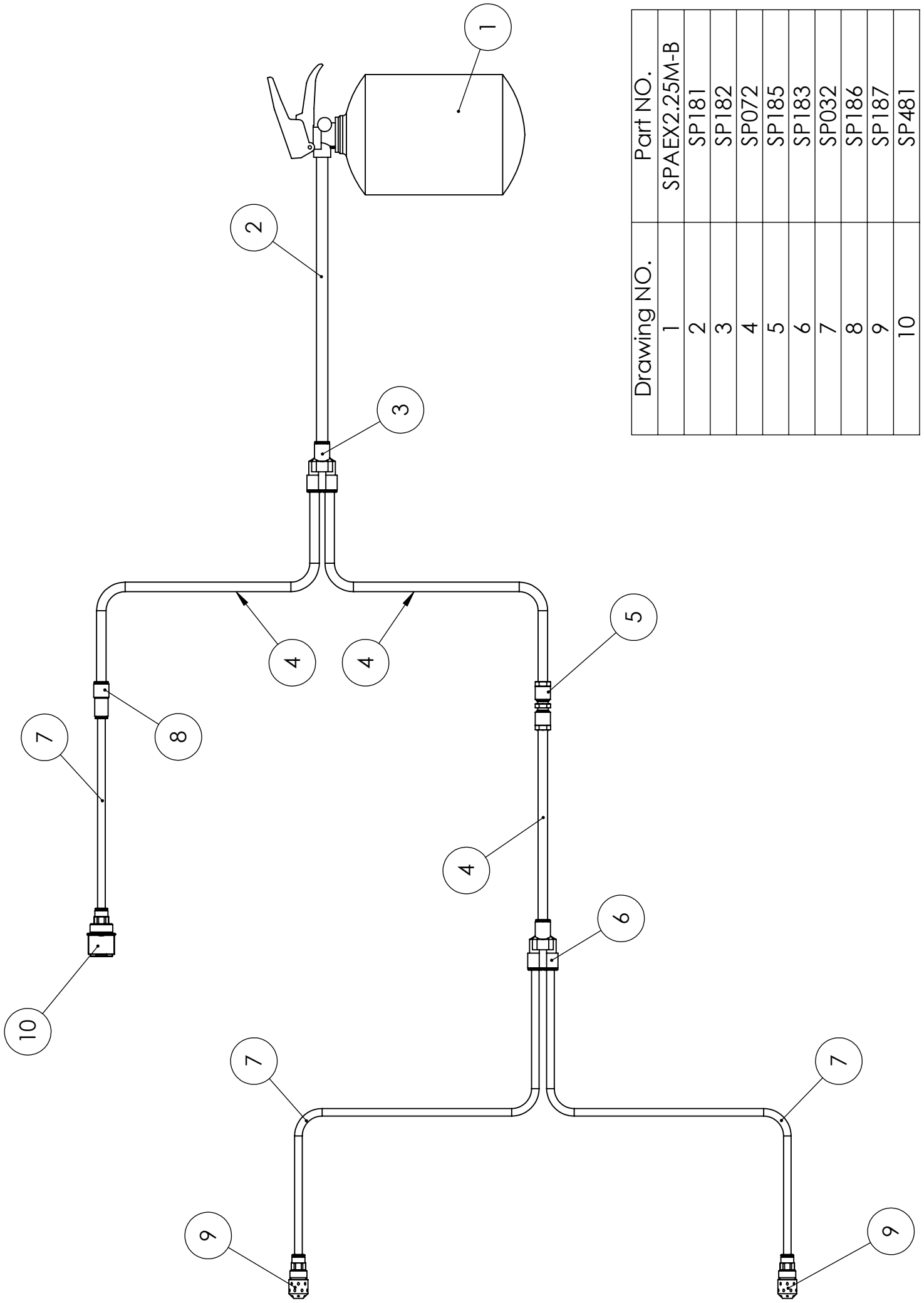


Fig 2

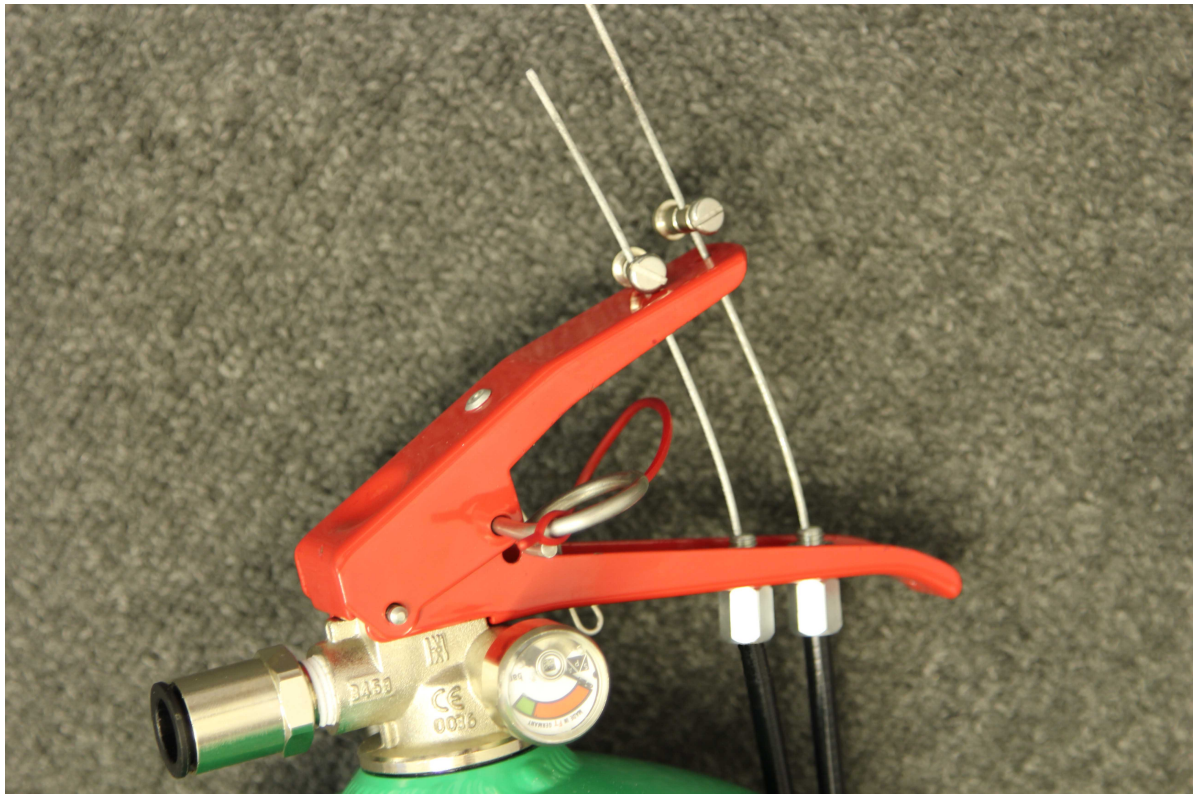
Part Description	
1	12mm Decabon Hose (0.5 Meter)
2	12mm-10mm Y-Piece
3	10mm Decabon Hose (1 Meter)
4	10mm-8mm Reducer
5	8mm Decabon Hose (2.5 Meters)
6	8mm-6mm Y-Piece
7	6mm Decabon Hose (4.5 Meters)
8	Cockpit Nozzle
9	10mm Bulkhead Fitting
10	10mm-8mm Y-Piece
11	Engine Bay Nozzle



Drawing NO.	Part NO.
1	SPAEX2.25M-B
2	SP181
3	SP182
4	SP072
5	SP185
6	SP183
7	SP032
8	SP186
9	SP187
10	SP481

# LEVER VALVE ATTACHMENTS

Fig 3



## MECHANICAL SYSTEM FITTING INSTRUCTIONS

This SPA Extreme system is mechanically operated, it uses two T handle pull cables one at 6 feet and one at 12 feet in length. Please read carefully the below instructions.

Unpack all parts and check against contents list page

Decide the best position for the extinguisher system - it is recommended that the bottle be mounted in the fore and aft direction of the vehicle.

It is important that the contents label and pressure gauge are clearly visible for scrutineering. Mount the bottle securely in the brackets.

Insert the tubing into the push-in fitting on the lever valve and lay the end of the tube from the cylinder to the chosen location for the nozzle, push the nozzle onto the tubing and orientate this to point the nozzle in the direction of the anticipated fire source.

**Make sure the safety pin is in place at all times during assembly.**

**When installing cables it is important there are no kinks in the cable and no 'S' bends formed which may cause malfunction.**

Mount the 6 foot cable in the cockpit within easy reach of the driver when sitting in the seat wearing the safety harnesses - the other end of the cable is to be threaded through one of the adjusting screws on the handle of the lever valve on the cylinder. **Fig 3**

Once this is inserted through the clamp it is important to not have more than 6mm of play in the cable where it has been clamped.

Mount the 12 foot cable on the outside of the vehicle, (close to the exterior master switch is the recommended position).

Lay the cable in the vehicle and connect to the lever valve as shown in **Fig 3**

**Remove the safety pin from the lever valve only when ready to use.**

## TUBING

Each SPA Extreme system kit is supplied with Decabon tubing which is a coated aluminium tube which can be molded and flexed to suit this application. The SPA Extreme system has been designed and homologated using this type of tube. DO NOT substitute this tube for any other type.

## TUBE CONNECTIONS

All fittings for tube to nozzles and bottles are of the push-in type. Insert the tube into the fitting, push firmly until it clicks. Once in you should not be able to pull it out. To remove the tubing, push the tube into the fitting and at the same time push the black collet back towards the fitting and then pull the tube from the fitting.

## MAINTENANCE

To ensure maximum possible performance from your SPA Extreme system, the following checks and maintenance procedures should be carried out.

Regularly check Nozzles for debris or any obstructions externally or internally.

Regularly check the integrity of the pipe work and fitting.

Regularly check the cylinder for damage or corrosion.

Regularly check the mounting bracket and retaining straps are secure.

Your SPA fire suppression system must be serviced every 2 years, a service due date is written on the contents label located on your cylinder. It is up to you to ensure the services are carried out at the correct intervals.

If your system has been discharged or requires a 2 year service you must return it to SPA or an agent approved by SPA.

## NOTES

Please ensure that you monitor the following **as you may not pass scrutineering if**

The bottle contents label is worn, damaged or unreadable.

The system is not within service date.

The system is in poor condition.

## EXTREME DATA SHEET

Application	Autosport industry - including saloon, race cars & single seaters.
Composition	Dodecafluoro-2-methylpentan-3-one, (CF <sub>3</sub> CF <sub>2</sub> C(O)CF(CF <sub>3</sub> ) <sub>2</sub> )
Ozone depletion potential	None
Operating temperature	-40 to + 80°C
Freezing point	-108°C
Critical temperature	168.7°C
Physiological properties	No observed adverse effect level and lowest observed adverse effect level for cardiac sensitization (halocarbon) and oxygen depletion (Inert gas).

A copy of the 3M™ Novec™ 1230 fire protection fluid material safety data sheet can be obtained from SPA Design or SPA Technique upon request.