

2022 SPANISH GRAND PRIX

19 - 22 May 2022

From	The FIA Formula One Race Director	Document	5
To	All Teams, All Officials	Date	19 May 2022
		Time	13:45

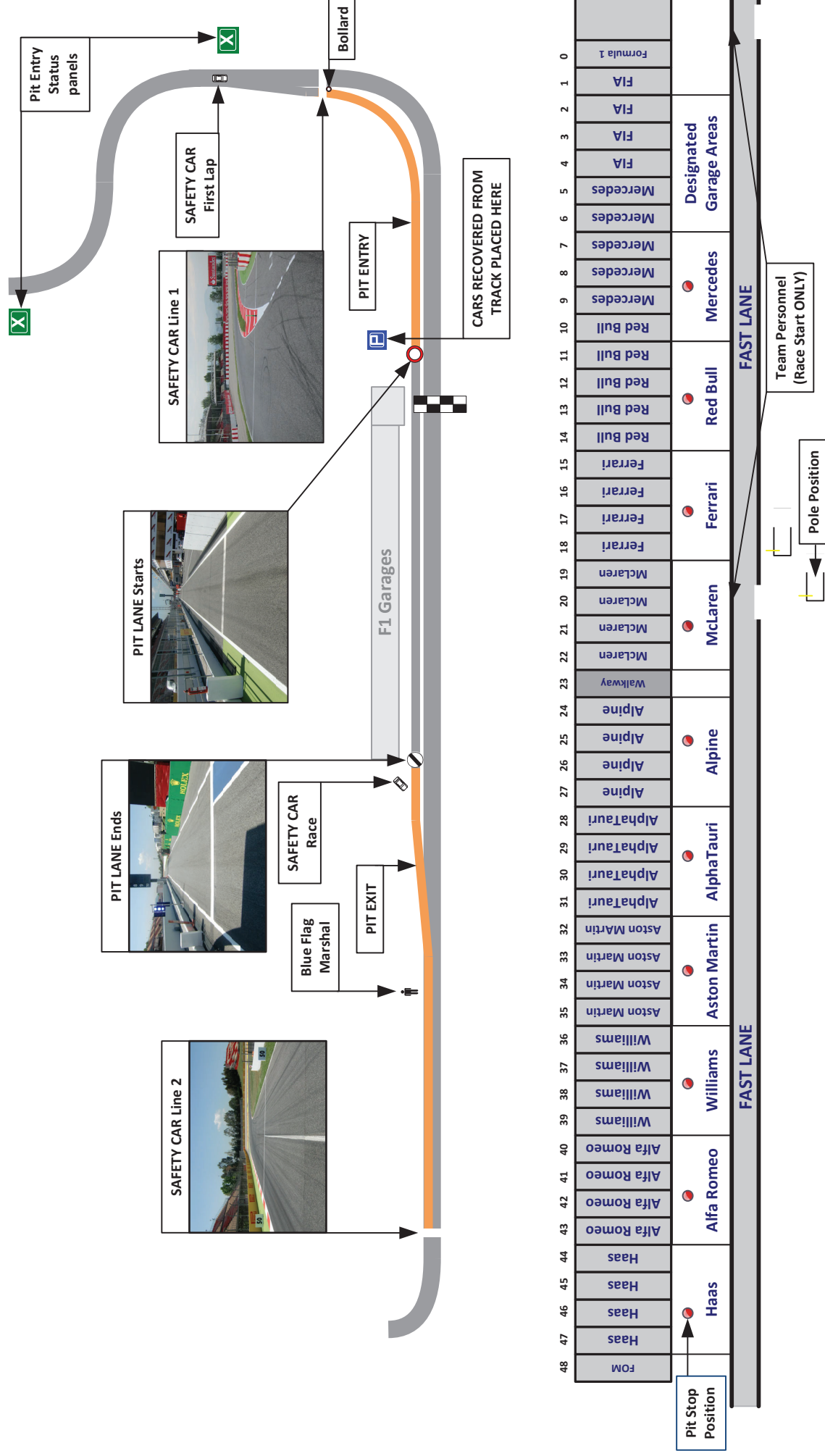
Title Event Notes - Pit Lane Drawing, Red Zone and Pirelli Preview

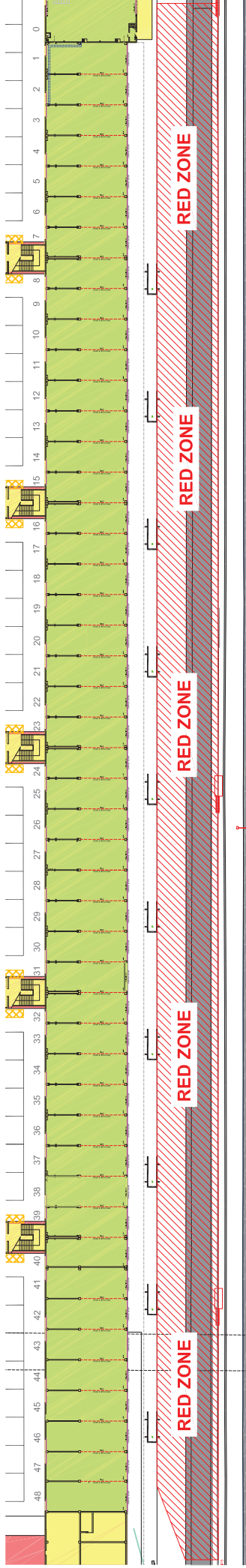
Description Event Notes - Pit Lane Drawing, Red Zone and Pirelli Preview

Enclosed ESP DOC 5 - Pit Lane and Red Zone and Pirelli Preview.pdf

Eduardo Freitas

The FIA Formula One Race Director

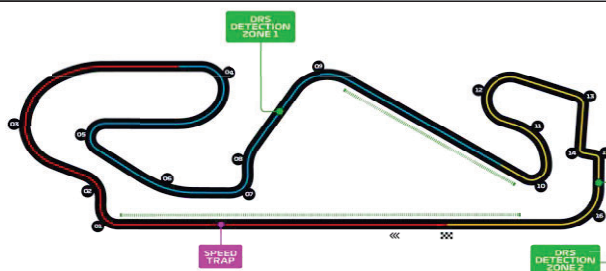




PHOTOGRAPHERS EXCLUSION RED ZONE

FORMULA 1 PIRELLI GRAN PREMIO DE ESPAÑA 2022

Grand Prix of Spain 20/05-22/05/2022 (22R06BCN)



Compounds selection

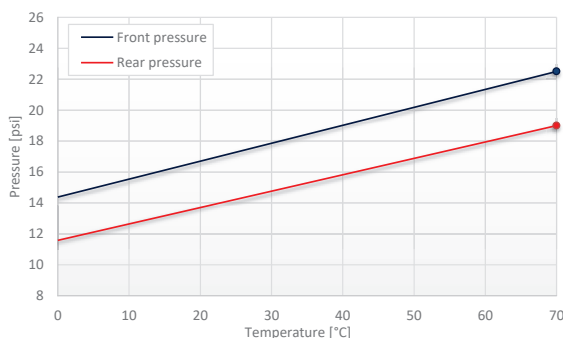
Compound	FL	FR	RL	RR	Mandatory race tyres
C1	1X1	1X2	1X3	1X4	C1
C2	2G1	2G2	2G3	2G4	C2
C3	3Z1	3Z2	3Z3	3Z4	C3
Intermediate	9G1	9G2	9G3	9G4	Q3 tyre
Wet	95B	96B	97B	98B	C3

Prescriptions

Pressures & camber

	Minimum starting pressure			Expected stabilized running pressure	Camber limit
	Slicks	Intermediate	Wet		
Front	22.5 psi	22.5 psi	21.5 psi	≥24.5 psi	-3.25°
Rear	19.0 psi	19.0 psi	18.0 psi	≥21.0 psi	-1.75°

Cold Pressure Cooling Curve



$$P_{front} = (T - 70) \cdot 0.116 + P_{startf}$$

$$P_{rear} = (T - 70) \cdot 0.106 + P_{startr}$$

P_{startf}: Minimum starting pressure on the front axle [psi]

P_{startr}: Minimum starting pressure on the rear axle [psi]

T: Tyre temperature [°C]

Maximum heating times and temperatures (tread & sidewall)

Temperature	0	40	60	70 (°C)
Slicks	max. 3h			
Intermediate	max. 2h			
Wet	max. 2h			

- Temperatures refer to tyre tread and side wall temperatures, not blanket or controller set-point temperatures.
- Tyres may only be heated prior to the session in which they are intended to be used.
- The temperatures apply at all times during the event.

Tyres notes

<ul style="list-style-type: none"> • Not permitted to switch tyres from their originally allocated position. • Do not subject tyres to large deformation or heavy impact. • Do not leave fitted tyres exposed at an air temperature lower than 15°C and/or any UV emission. • Revised prescriptions could be issued during the race weekend in accordance with TD003. 	<ul style="list-style-type: none"> • Heating time temperature limits apply to the actual tyre surface temperature measured with the IR gun as detailed in the TD003 • Cold cooling curve temperature limits apply to the tyre side wall temperature measured with the probe as detailed in TD003 • BLANKET HEATING TIME for each temperature range to be counted from the moment the blanket control unit is set to reach its targeted temperature within its correspondent interval.
---	--

General notes

<p>Teams are kindly reminded that the following will be subject to FIA checks during the event:</p> <ul style="list-style-type: none"> • Starting pressures • Cold pressures (according to the cold pressure cooling curves) • Re-heat pressures • EOS Camber • Maximum tyre temperatures in blankets • Tyre swapping
