



## 2022 EMILIA ROMAGNA GRAND PRIX

21 - 24 April 2022

---

<b>From</b>	The FIA Formula One Race Director	<b>Document</b>	3
<b>To</b>	All Teams, All Officials	<b>Date</b>	21 April 2022
		<b>Time</b>	12:25

---

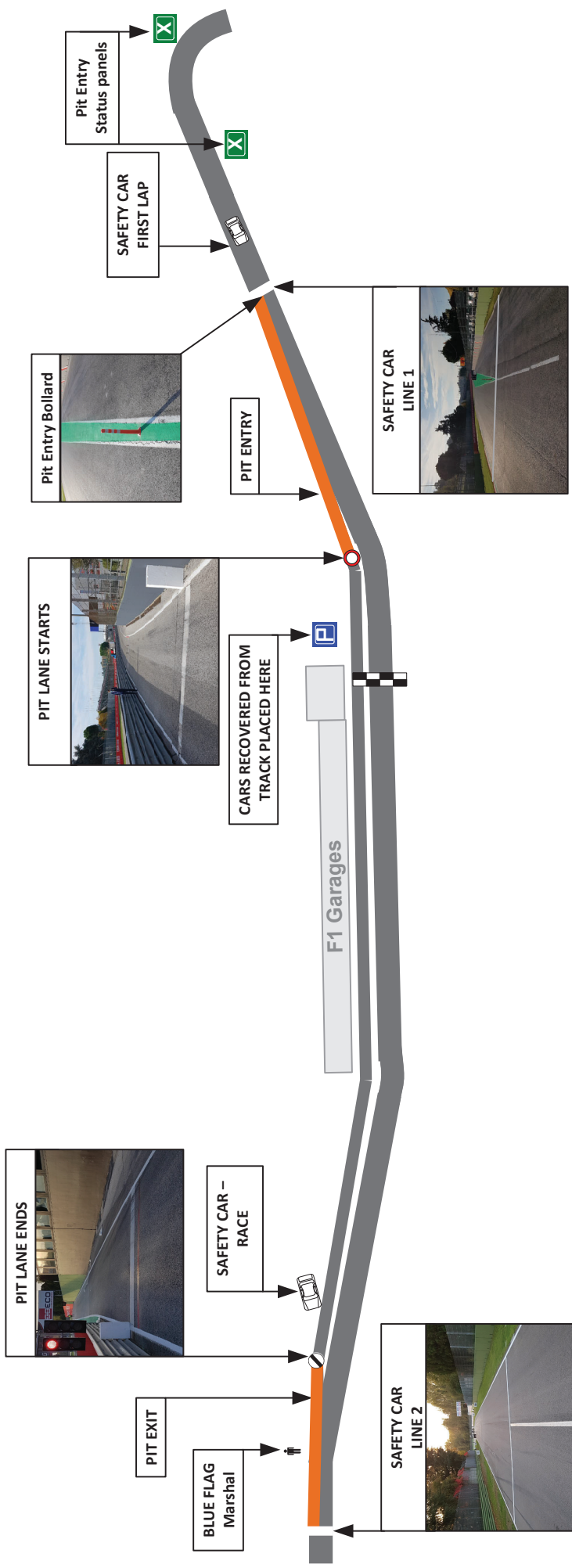
**Title** Event Notes - Pit Lane Drawing, Red Zone and Pirelli Preview

**Description** Event Notes - Pit Lane Drawing, Red Zone and Pirelli Preview

**Enclosed** EMI DOC 3 - Pit Lane and Red Zone and Pirelli Preview.pdf

**Niels Wittich**

**The FIA Formula One Race Director**



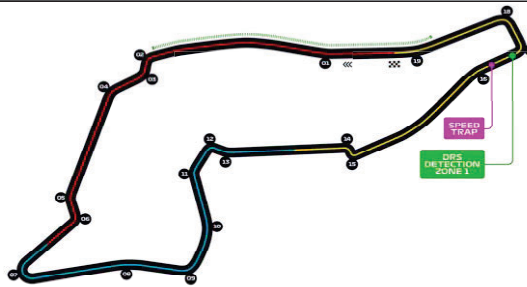
32	31	30	29	28	27	26	25	24	23	22	21	20	19	18	17	16	15	14	13	12	11	10	9	8	7	6	5	4	3	2	1	C	B	A		
Haas	Haas	Haas	Alfa Romeo	Alfa Romeo	Alfa Romeo	Williams	Williams	Williams	Aston Martin	Aston Martin	Aston Martin	AlphaTauri	AlphaTauri	AlphaTauri	Alpine	Alpine	Alpine	McLaren	McLaren	McLaren	Ferrari	Ferrari	Ferrari	Red Bull	Red Bull	Red Bull	Mercedes	Mercedes	Mercedes	Mercedes	Formula 1	Formula 1	FIA	FIA	FIA	Race Control Tower
→	→	→	→	→	→	→	→	→	→	→	→	→	→	→	→	→	→	→	→	→	→	→	→	→	→	→	→	→	→	→	→	→	→	→	→	
Pit Stop Position		Alfa Romeo		Williams		AstonMartin			AlphaTauri			Alpine			McLaren			Ferrari			Red Bull			Mercedes			Formula 1			Designated Garage Areas			Race Control Tower			



In agreement with the FIA and in accordance with Article 24.4 a) of the F1 Sporting Regulations, this document contains the prescriptions for the operation of tyres during the following event.

Document version: 1 issue: A

**Grand Prix of Emilia Romagna 22/04-24/04/2022 (22R04IMO)**



**Compounds selection**

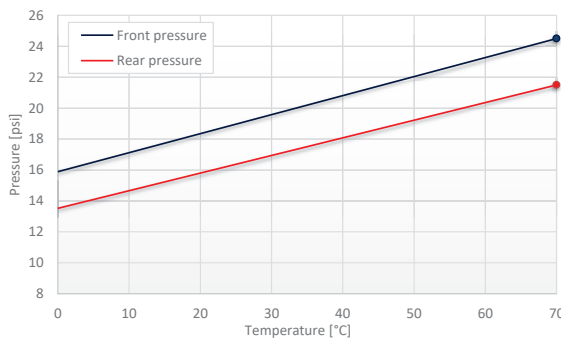
Compound	FL	FR	RL	RR	Mandatory race tyres
<b>C2</b>	2X1	2X2	2X3	2X4	<b>C2</b>
<b>C3</b>	3G1	3G2	3G3	3G4	<b>C3</b>
<b>C4</b>	4Z1	4Z2	4Z3	4Z4	<b>Q3 tyre</b>
<b>Intermediate</b>	9G1	9G2	9G3	9G4	<b>C4</b>
<b>Wet</b>	95B	96B	97B	98B	

**Prescriptions**

**Pressures & camber**

	Minimum starting pressure			Expected stabilized running pressure	Camber limit
	Slicks	Intermediate	Wet		
<b>Front</b>	24.5 psi	24.5 psi	23.5 psi	≥26.5 psi	-3.50°
<b>Rear</b>	21.5 psi	21.5 psi	20.5 psi	≥23.5 psi	-1.75°

**Cold Pressure Cooling Curve**



$$P_{front} = (T - 70) \cdot 0.123 + P_{startf}$$

$$P_{rear} = (T - 70) \cdot 0.114 + P_{startr}$$

$P_{startf}$ : Minimum starting pressure on the front axle [psi]

$P_{startr}$ : Minimum starting pressure on the rear axle [psi]

$T$ : Tyre temperature [°C]

**Maximum heating times and temperatures (tread & sidewall)**

Temperature	0	40	60	70 (°C)
<b>Slicks</b>	max. 3h			
<b>Intermediate</b>	max. 2h			
<b>Wet</b>	max. 2h			

- Temperatures refer to tyre tread and side wall temperatures, not blanket or controller set-point temperatures.
- Tyres may only be heated prior to the session in which they are intended to be used.
- The temperatures apply at all times during the event.

**Tyres notes**

- Not permitted to switch tyres from their originally allocated position.
- Do not subject tyres to large deformation or heavy impact.
- Do not leave fitted tyres exposed at an air temperature lower than 15°C and/or any UV emission.
- Revised prescriptions could be issued during the race weekend in accordance with TD003.
- Heating time temperature limits apply to the actual tyre surface temperature measured with the IR gun as detailed in the TD003
- Cold cooling curve temperature limits apply to the tyre side wall temperature measured with the probe as detailed in TD003
- BLANKET HEATING TIME for each temperature range to be counted from the moment the blanket control unit is set to reach its targeted temperature within its correspondent interval.

**General notes**

- Teams are kindly reminded that the following will be subject to FIA checks during the event:
- Starting pressures
  - Cold pressures (according to the cold pressure cooling curves)
  - Re-heat pressures
  - EOS Camber
  - Maximum tyre temperatures in blankets
  - Tyre swapping