



FEDERATION INTERNATIONALE DE L'AUTOMOBILE

Homologation N°

AH.021.22

16.06.2022

FICHE DE PRESENTATION DES CASQUES HAUTE PERFORMANCE (NORME FIA 8860-2018) PRESENTATION FORM FOR ADVANCED HELMETS (FIA STANDARD 8860-2018)

1. GENERALITES / GENERAL

101. CONSTRUCTEUR / MANUFACTURER

ZAMP INC

- a) Adresse / Address: 2574 S BEVERLY STREET SUITE 100, BOISE, ID 83709 USA
- b) Téléphone / Phone: 208-506-3030
- c) E-mail / E-mail: DZAMP@ZAMP-RACING.COM

102. DATE DE LA FICHE DE PRESENTATION / PRESENTATION FORM DATE

Date / Date: 16.06.2022

103. PHOTO DU CASQUE / PICTURE OF THE HELMET



104. MODELE ET VERSIONS / MODEL AND VERSIONS

- a) Modèle / Model: RZ-880 FULL FACE WITH VENTS
RZ-88C FULL FACE WITHOUT VENTS
- b) Type de casque / Type of helmet: Intégral / Full-face
- c) Avec protection balistique avancée / With advanced ballistic protection: Non / No
- d) Versions disponibles / Available versions:

| | | | | | |
|---------------------------|--|---------------------------|---|---------------------------|--|
| Nom / Name | RZ-880 | Nom / Name | RZ-88C | Nom / Name | |
| Description / Description | FULL FACE WITH SHIELD & VENTS | Description / Description | FULL FACE WITH SHIELD & NO VENTS | Description / Description | |

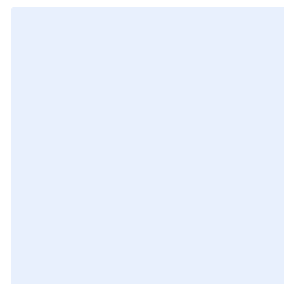
A1)



B1)



C1)



Marque
Make

ZAMP

Modèle
Model

RZ-88C/RZ-88O

Homologation N°

AH.021.22

105. TAILLES DISPONIBLES / SIZES AVAILABLE

Tailles / Sizes

XS 54CM, XS 55CM, S 56CM, S 57CM, M 58CM, M 59CM, L 60CM,
L 61CM, XL 62CM, XXL 63CM, XXXL 64CM

2. DETAILS DU CASQUE / DETAILS OF THE HELMET

201. VUES / VIEWS

D1) Vue de face / Front view



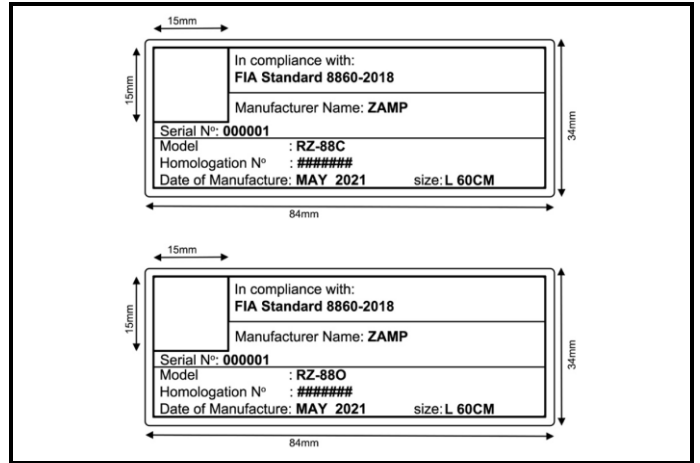
D2) Vue du Côté Droite / Right Side view



D3) Vue de haut / Top view



D4) Etiquette d'homologation / Homologation label



202. NOMBRE ET POSITION DES TROUS DE VENTILATION / NUMBER AND POSITION OF VENTILATION HOLES

| | Menton Chin | | Top Top | | Trous pour boire Drinking hole |
|------------------------------------|----------------|------------------------------------|------------|--------------------|-----------------------------------|
| Nombre de trous Number of holes | 5 | Nombre de trous Number of holes | 14 | Inclus Included | Non/No |

3. ACCESSOIRES DISPONIBLES / AVAILABLE ACCESSORIES

E1) EAR MUFFS



E2) TOP CLEAR SCOOP



E3) AERO CAP



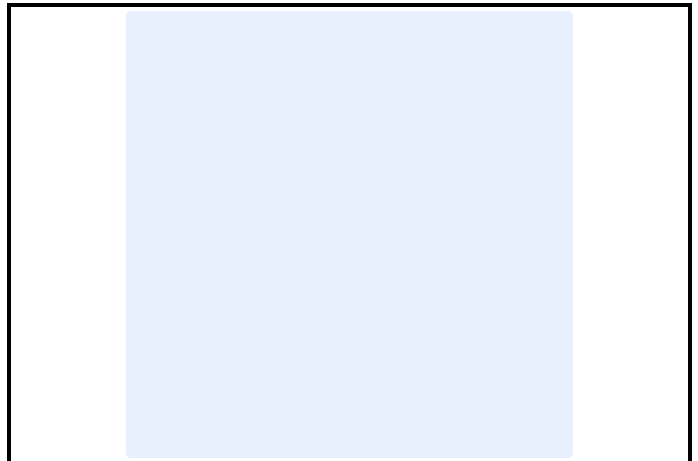
E4) Top Air



E5) Comm Cap



E6)



Marque
Make **ZAMP**

Modèle
Model **RZ-88C/RZ-88O**

Homologation N°

AH.021.22

INFORMATIONS COMPLEMENTAIRES / COMPLEMENTARY INFORMATION

