



# FEDERATION INTERNATIONALE DE L'AUTOMOBILE

Homologation N°

**AH.020.21-C**

11.09.2024

## FICHE DE PRESENTATION DES CASQUES HAUTE PERFORMANCE (NORME FIA 8860-2018) PRESENTATION FORM FOR ADVANCED HELMETS (FIA STANDARD 8860-2018)

### 1. GENERALITES / GENERAL

#### 101. CONSTRUCTEUR / MANUFACTURER

**SCHUBERTH GMBH**

- a) Adresse  
Address **STEGELITZER STR. 12, 39126 MAGDEBURG, GERMANY**
- b) Téléphone  
Phone **+49 391 8106 0**
- c) E-mail  
E-mail **CARRACING@SCHUBERTH.COM**

#### 102. DATE DE LA FICHE DE PRESENTATION / PRESENTATION FORM DATE

Date / Date **04.05.2026**

#### 103. PHOTO DU CASQUE / PICTURE OF THE HELMET



#### 104. MODELE ET VERSIONS / MODEL AND VERSIONS

- a) Modèle  
Model **SF4**
- b) Type de casque  
Type of helmet **Intégral / Full-face**
- c) Avec protection balistique avancée  
With advanced ballistic protection **Non / No**
- d) Versions disponibles  
Available versions

Nom  
Name **SF4**

Nom  
Name

Nom  
Name

Description  
Description **ORIGINAL**

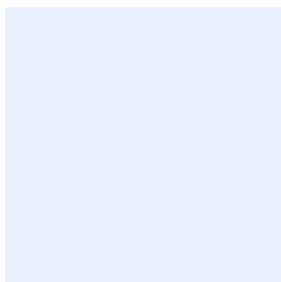
Description  
Description

Description  
Description

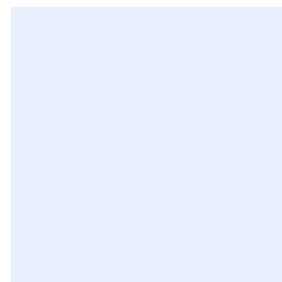
**A1)**



**B1)**



**C1)**



Marque  
Make **SHUBERTH**

Modèle  
Model **SF4**

Homologation N°

**AH.020.19-C**

**105. TAILLES DISPONIBLES / SIZES AVAILABLE**

Tailles / Sizes **54,55,56,57,58,59,60,61,61+**

**2. DETAILS DU CASQUE / DETAILS OF THE HELMET**

**201. VUES / VIEWS**

D1) Vue de face / Front view



D2) Vue du Côté Droite / Right Side view



D3) Vue de haut / Top view



D4) Etiquette d'homologation / Homologation label

	In compliance with: <b>FIA Standard 8860-2018</b>
	Manufacturer Name: <b>SCHUBERTH GMBH</b>
	Serial N°: XX - XXXX- XXXX
Model	: SF4
Homologation N°	: AH.XXX.XX-C
Date of Manufacture:	XX-XXXX
	Size: XX

**202. NOMBRE ET POSITION DES TROUS DE VENTILATION / NUMBER AND POSITION OF VENTILATION HOLES**

	Menton Chin		Top Top		Trous pour boire Drinking hole
Nombre de trous Number of holes	4	Nombre de trous Number of holes	12	Inclus Included	Non/No

**3. ACCESSOIRES DISPONIBLES / AVAILABLE ACCESSORIES**

E1) Top spoiler (back view)



E2) Top spoiler (top view)



E3) Standard scoop



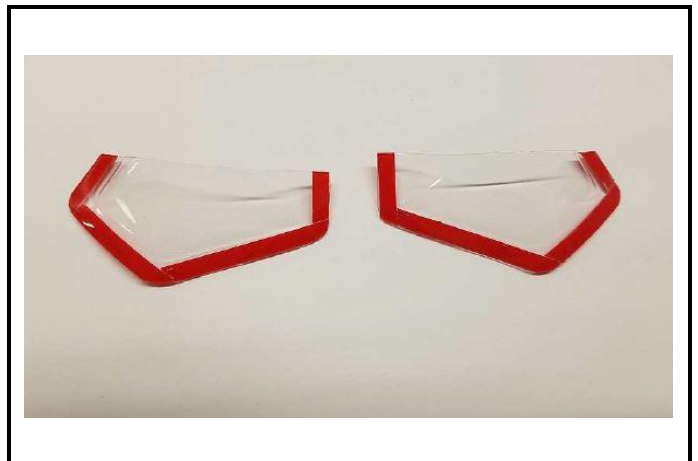
E4) Flat scoop



E5) Chin spoiler



E6) Chin ventilation scoops



E7) Ventilation scoops small



E8) NASCAR scoop S and L connector



E9) Intercom system



E10) Intercom system without boom



E11) Ear cups/ ear pads



E12) Clip earplug connector

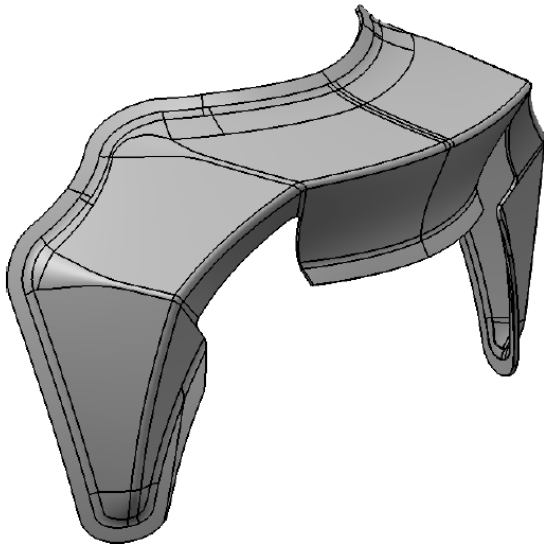


**INFORMATIONS COMPLEMENTAIRES / COMPLEMENTARY INFORMATION**

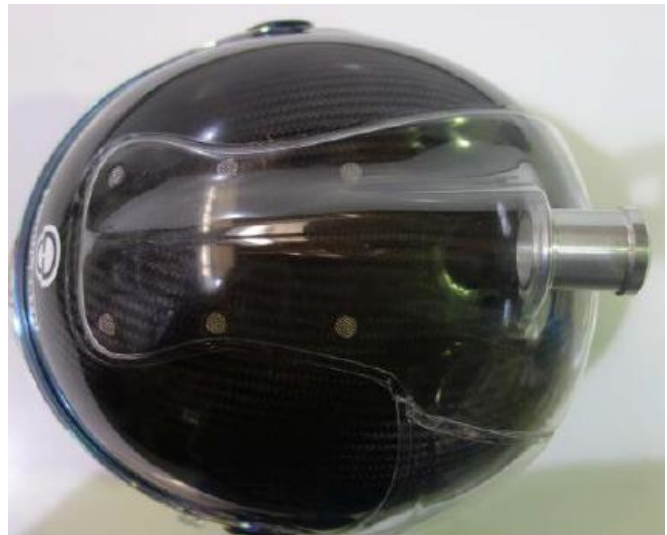
Helmet available with unpainted (left side) and glossy painted shell (right side)



Alternative Small Rear Top Spoiler



Forced air scoop



Marque  
Make

**SHUBERTH**

Modèle  
Model

**SF4**

Homologation N°

**AH.020.19-C**

Helmet Camera - Zeronoise DE GEN 2.5 LW



Alternative Double D ring is approved on this helmet

