



FEDERATION INTERNATIONALE DE L'AUTOMOBILE

Homologation N°

AH.020.21-C

22.02.2023

FICHE DE PRESENTATION DES CASQUES HAUTE PERFORMANCE (NORME FIA 8860-2018) PRESENTATION FORM FOR ADVANCED HELMETS (FIA STANDARD 8860-2018)

1. GENERALITES / GENERAL

101. CONSTRUCTEUR / MANUFACTURER

SCHUBERTH GMBH

- a) Adresse
Address STEGELITZER STR. 12, 39126 MAGDEBURG, GERMANY
- b) Téléphone
Phone +49 391 8106 0
- c) E-mail
E-mail CARRACING@SCHUBERTH.COM

102. DATE DE LA FICHE DE PRESENTATION / PRESENTATION FORM DATE

Date / Date 16.11.2021

103. PHOTO DU CASQUE / PICTURE OF THE HELMET



104. MODELE ET VERSIONS / MODEL AND VERSIONS

- a) Modèle
Model **SF4**
- b) Type de casque
Type of helmet **Intégral / Full-face**
- c) Avec protection balistique avancée
With advanced ballistic protection **Non / No**
- d) Versions disponibles
Available versions

Nom
Name **SF4**

Nom
Name

Nom
Name

Description
Description **ORIGINAL**

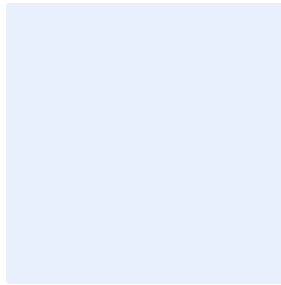
Description
Description

Description
Description

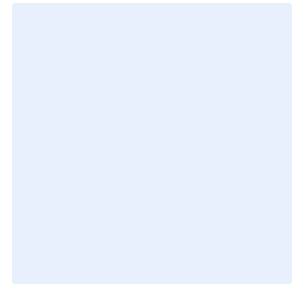
A1)



B1)



C1)



105. TAILLES DISPONIBLES / SIZES AVAILABLE

Tailles / Sizes

XS-L (54-59)

2. DETAILS DU CASQUE / DETAILS OF THE HELMET

201. VUES / VIEWS

D1) Vue de face / Front view



D2) Vue du Côté Droite / Right Side view



Marque
Make **SHUBERTH**

Modèle
Model **SF4**

Homologation N°

AH.020.19-C

D3) Vue de haut / Top view



D4) Etiquette d'homologation / Homologation label

	In compliance with: FIA Standard 8860-2018	
	Manufacturer Name: SCHUBERTH GMBH	
Serial N°: XX - XXXX- XXXX		
Model	: SF4	
Homologation N°	: AH.XXX.XX-C	
Date of Manufacture:	XX-XXXX	Size: XX

202. NOMBRE ET POSITION DES TROUS DE VENTILATION / NUMBER AND POSITION OF VENTILATION HOLES

	Menton Chin		Top Top		Trous pour boire Drinking hole
Nombre de trous Number of holes	4	Nombre de trous Number of holes	12	Inclus Included	Non/No

3. ACCESSOIRES DISPONIBLES / AVAILABLE ACCESSORIES

E1) Top spoiler (back view)



E2) Top spoiler (top view)



E3) Standard scoop



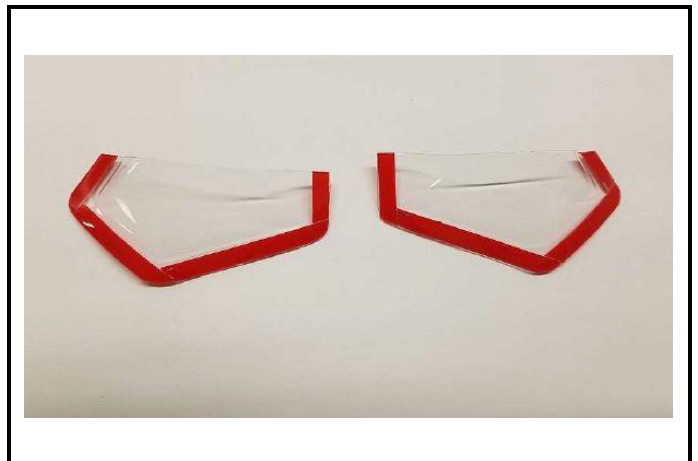
E4) Flat scoop



E5) Chin spoiler



E6) Chin ventilation scoops



E7) Ventilation scoops small



E8) NASCAR scoop S and L connector



E9) Intercom system



E10) Intercom system without boom



E11) Ear cups/ ear pads



E12) Clip earplug connector

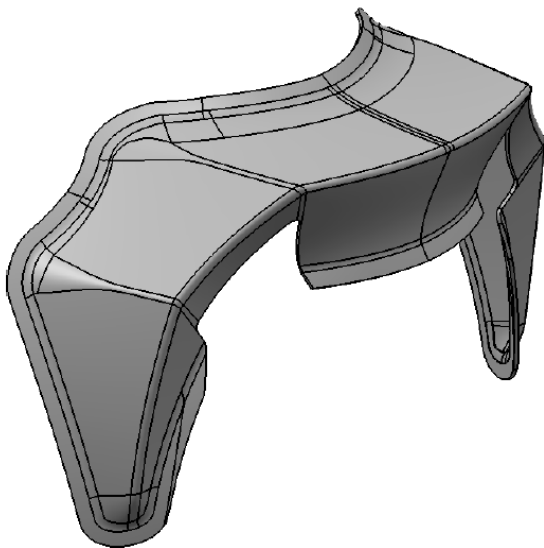


INFORMATIONS COMPLEMENTAIRES / COMPLEMENTARY INFORMATION

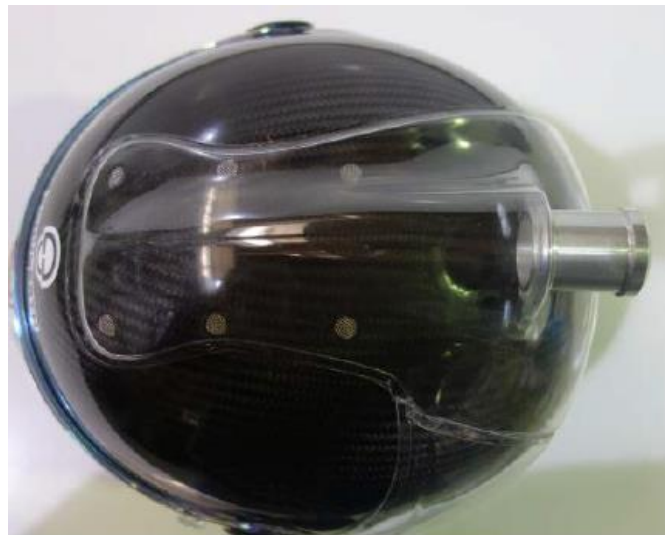
Helmet available with unpainted (left side) and glossy painted shell (right side)



Alternative Small Rear Top Spoiler



Forced air scoop



Marque
Make **SHUBERTH**

Modèle
Model **SF4**

Homologation N°

AH.020.19-C

Helmet Camera - Zeronoise DE GEN 2.5 LW

