

SEATS HOMOLOGATED ACCORDING TO THE FIA STANDARD 8855-1999

TECHNICAL LIST N° 12

**NON VALABLE APRÈS LE 31.12.2016
NOT VALID AFTER 31.12.2016**

**NOUVELLE ETIQUETTE EN VIGUEUR A COMPTER DU
01.01.2012 JUSQU'AU 31.12.2013
NEW LABEL IN EFFECT FROM 01.01.2012 UNTIL 31.12.2013**

**NOUVELLE ETIQUETTE EN VIGUEUR A COMPTER DU
01.01.2014
NEW LABEL IN EFFECT AS OF 01.01.2014**

**SIEGES REVALIDÉS AVANT LE 01.07.2017
SEATS RE-VALIDATED BEFORE 01.07.2017**

**SIEGES REVALIDÉS A PARTIR DU 01.07.2017
SEATS RE-VALIDATED AS FROM 01.07.2017**



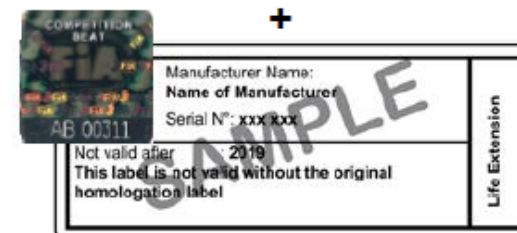
Homologation label (see above)

+

Manufacturer label with quality inspection stamp and new validity date

Homologation label (see above)

+



⁽¹⁾ The homologation end date represents the final date on which the products may be manufactured

⁽²⁾ The validity of the product must always be that which is indicated on the product homologation label. The dates in this column are the latest possible dates that can be shown on the homologation label

⁽³⁾ Please refer to the end of this section

HOMOL. NUMBER	BRAND	MODEL	SUPPORTS TO BE USED (LATERAL / LOWER / BACK)	S2000	START OF HOMOL.	END OF HOMOL. ⁽¹⁾	PRODUCT VALID UNTIL ⁽²⁾
.CS.826.97	OMP	GRIP / CHAMP	Lateral		12.1997	12.2027	2032
.CS.828.97	OMP	Record	Lateral	X	12.1997	12.2017	2022
.CS.830.97	SPARCO	ATLAS VTR	Lateral		12.1997	12.2017	2022
.CS.831.97	SPARCO	EVO 2 VTR	Lateral		12.1997	12.2017	2022
.CS.832.98	SPARCO	Touring CC	Lateral	X	06.1998	06.2017	2022
.CS.900.98	MOMO	Mirage S	Lateral		04.1998	04.2017	2022
.CS.904.98	OMP	ARS	Lateral		01.1998	01.2027	2032
.CS.905.98	SPARCO	Touring VTR	Lateral	X	01.1998	01.2017	2022
.CS.909.98	EKTOR	ektor ho	Lateral		12.1998	12.2017	2022
.CS.911.98	OMP	Grip Carbon	Lateral		04.1998	04.2017	2022
.CS.912.98 ⁽³⁾	KINGDRAGON	Master VTR	Lateral		06.1998	06.2017	2022
.CS.913.98	MOMO	Rooky	Lower		06.1998	06.2017	2022
.CS.914.98	MOMO	Nascar	Lateral		06.1998	06.2017	2022
.CS.915.98	SPARCO	Rev	Lateral or Lower		06.1998	06.2017	2022
.CS.916.98	SPARCO	Ultra	Lateral or Lower		06.1998	06.2017	2022
.CS.917.98	SPARCO	Pro 2000	Lateral or Lower		06.1998	06.2017	2022
.CS.918.98	SPARCO	EVO	Lateral		06.1998	06.2017	2022
.CS.919.98	MOMO	Mirage	Lateral		06.1998	06.2017	2022
.CS.922.98	EKTOR	Start EVO	Lateral		06.1998	06.2017	2022
.CS.924.98	OMP	ARS	Lateral		07.1998	07.2017	2022
.CS.925.98	OMP	Pista HA/684	Lateral	X	07.1998	07.2017	2022
.CS.927.98	KINGDRAGON	Master K/C	Lateral		08.1998	08.2017	2022
.CS.928.98	KINGDRAGON	Polaris K/C	Lateral		08.1998	08.2017	2022
.CS.929.98	MOMO	Mille Laghi Evo VTR	Lateral		08.1998	08.2017	2022
.CS.930.98	MOMO	Top Nascar K/C	Lateral		08.1998	08.2017	2022
.CS.931.98	MOMO	Mille Laghi Evo K/C	Lateral		08.1998	08.2017	2022
.CS.932.98	KINGDRAGON	Polaris VTR	Lateral		08.1998	08.2017	2022
.CS.933.98	MOMO	Montecarlo VTR	Lateral		08.1998	08.2017	2022
.CS.934.98	MOMO	Extreme K/C	Lateral		08.1998	08.2017	2022

⁽¹⁾ The homologation end date represents the final date on which the products may be manufactured

⁽²⁾ The validity of the product must always be that which is indicated on the product homologation label. The dates in this column are the latest possible dates that can be shown on the homologation label

⁽³⁾ Please refer to the end of this section

HOMOL. NUMBER	BRAND	MODEL	SUPPORTS TO BE USED (LATERAL / LOWER / BACK)	S2000	START OF HOMOL.	END OF HOMOL. ⁽¹⁾	PRODUCT VALID UNTIL ⁽²⁾
.CS.935.98	MOMO	Acropolis VTR	Lateral		08.1998	08.2017	2022
.CS.936.98	MOMO	Top Nascar VTR	Lateral		08.1998	08.2017	2022
.CS.937.98	SPARCO	Corsa	Lateral		08.1998	08.2017	2022
.CS.938.98	SPARCO	CHALLENGE VTR	Lateral		07.1998	07.2017	2022
.CS.940.98	OMP	Pista HA/686	Lateral	X	10.1998	10.2017	2022
.CS.941.98	OMP	RS HA/633	Lateral		10.1998	10.2017	2022
.CS.942.98	OMP	ECO HA/644	Lower		10.1998	10.2017	2022
.CS.943.98	EKTOR	ektor start	Lateral		12.1998	12.2017	2022
.CS.944.98	EKTOR	ektor winner	Lateral		12.1998	12.2017	2022
.CS.945.98	EKTOR	ektor rush kevlar/carbone	Lateral		12.1998	12.2017	2022
.CS.946.98	MOMO	Tframe	Lower		12.1998	12.2017	2022
.CS.947.99	OMP	GRIP K/C or HA/636	Lateral		01.1999	01.2017	2022
.CS.948.99	OMP	EXTRA HA 634 or ECO XL	Lower		02.1999	02.2017	2022
.CS.949.99	SPARCO	PRO WRC	Lateral	X	02.1999	02.2017	2022
.CS.950.99	SPARCO	Atlas	Lateral	X	02.1999	02.2017	2022
.CS.951.99	SPARCO	Pro 2000	Lateral	X	02.1999	02.2017	2022
.CS.952.99	SPARCO	CORSA	Lateral	X	02.1999	02.2017	2022
.CS.953.99	SPARCO	TECNO	Lateral	X	02.1999	02.2017	2022
.CS.954.99	SPARCO	Junior	Lower		02.1999	02.2017	2022
.CS.955.99	SPARCO	INDY	Lower		02.1999	02.2017	2022
.CS.956.99	EKTOR	EKTOR RUSH fibre	Lateral		12.1998	12.2017	2022
.CS.957.99	SPARCO	EVO	Lateral	X	02.1999	02.2017	2022
.CS.958.99	RACETECH	4009	Lateral		03.1999	03.2022	2027
.CS.959.99	TWR	Super touring 1999	Lateral	X	04.1999	04.2017	2022
.CS.960.99	NORFOLK	GTP seat	Frontal, lower and back		04.1999	04.2017	2022
.CS.961.99	MOMO	Nascar KC	Lateral		04.1999	04.2017	2022
.CS.962.99	MOMO	Extreme VTR	Lateral	X	04.1999	04.2017	2022
.CS.963.99	MOMO	Acropolis or EVO KC	Lateral		04.1999	04.2017	2022
.CS.964.99	RECARO	Pro Racer 99 SPA	Lateral	X	04.1999	04.2017	2022

⁽¹⁾ The homologation end date represents the final date on which the products may be manufactured

⁽²⁾ The validity of the product must always be that which is indicated on the product homologation label. The dates in this column are the latest possible dates that can be shown on the homologation label

⁽³⁾ Please refer to the end of this section

HOMOL. NUMBER	BRAND	MODEL	SUPPORTS TO BE USED (LATERAL / LOWER / BACK)	S2000	START OF HOMOL.	END OF HOMOL. ⁽¹⁾	PRODUCT VALID UNTIL ⁽²⁾
.CS.965.99	ISOMAX	ISOMAX SHR	Lateral	X	04.1999	04.2017	2022
.CS.966.99	SPARCO	TTE	No support		04.1999	04.2017	2022
.CS.967.99	SPARCO	Driver	Lateral		05.1999	05.2017	2022
.CS.968.99	GA RACING	CHAMP	Lateral		06.1999	06.2017	2022
.CS.969.99	GA RACING	SPEEDY	Lateral		06.1999	06.2017	2022
.CS.970.99	GA RACING	ECO	Lateral		06.1999	06.2017	2022
.CS.971.99	GA RACING	JET	Lateral	X	06.1999	06.2017	2022
.CS.972.99 ⁽³⁾	EKTOR	Runner-2000	Lower		06.1999	06.2017	2022
.CS.973.99	COBRA	Imola	Lateral		06.1999	06.2017	2022
.CS.974.99	COBRA	Evolution	Lateral	X	06.1999	06.2017	2022
.CS.975.99	COBRA	Imola GT	Lateral		06.1999	06.2017	2022
.CS.976.99	COBRA	Evolution GT	Lateral	X	06.1999	06.2017	2022
.CS.977.99	COBRA	Sportline	Lateral		06.1999	06.2017	2022
.CS.978.99	COBRA	Sportline GT	Lateral		06.1999	06.2017	2022
.CS.979.99	COBRA	Suzuka	Lateral		06.1999	06.2017	2022
.CS.980.99 ⁽³⁾	COBRA	Monaco	Lower		06.1999	06.2017	2022
.CS.981.99	GA RACING	JUMBO	Lateral	X	07.1999	07.2017	2022
.CS.982.99	GA RACING	RACE	Lateral		07.1999	07.2017	2022
.CS.983.99	RECARO	porsche pro racer 99 SPG	Lateral	X	07.1999	07.2017	2022
.CS.984.99	SPARCO	PRO WRC	Lateral		08.1999	08.2017	2022
.CS.985.99	GIOCAR	Skill	Lateral		08.1999	08.2017	2022
.CS.986.99	GA RACING	SAFARI KC	Lateral		10.1999	10.2017	2022
.CS.987.99	GA RACING	RACE KC	Lateral		10.1999	10.2017	2022
.CS.988.99	GA RACING	SPEEDY KC	Lateral		10.1999	10.2017	2022
.CS.989.99	OMP	WRC HA/640	Lateral		12.1999	12.2017	2022
.CS.990.00	KONIG	komfort or RSL3000	Lateral	X	01.2000	01.2017	2022
.CS.991.00	KONIG	komfort or RSL2000	Lateral		01.2000	01.2017	2022
.CS.992.00 ⁽³⁾	CORBEAU	Forza	Lower		01.2000	01.2017	2022
.CS.993.00 ⁽³⁾	CORBEAU	Pro-series	Lateral		01.2000	01.2017	2022

⁽¹⁾ The homologation end date represents the final date on which the products may be manufactured

⁽²⁾ The validity of the product must always be that which is indicated on the product homologation label. The dates in this column are the latest possible dates that can be shown on the homologation label

⁽³⁾ Please refer to the end of this section

HOMOL. NUMBER	BRAND	MODEL	SUPPORTS TO BE USED (LATERAL / LOWER / BACK)	S2000	START OF HOMOL.	END OF HOMOL. ⁽¹⁾	PRODUCT VALID UNTIL ⁽²⁾
.CS.994.00 ⁽³⁾	CORBEAU	Revolution	Lateral		01.2000	01.2017	2022
.CS.995.00	RECARO	Pro racer 99 SPG	Lateral	X	01.2000	01.2017	2022
.CS.996.00	RECARO	RACER SPG	Lateral	X	01.2000	01.2017	2022
.CS.997.00 ⁽³⁾	RECARO	Pole position	Lateral		01.2000	01.2017	2022
.CS.998.00	MOMO	CUP	Lateral		02.2000	02.2017	2022
.CS.999.00	SABELT	Montecarlo VTR	Lateral		05.2000	05.2017	2022
CS.003.00	SABELT	Montecarlo CARB	Lateral		05.2000	05.2017	2022
CS.004.00	SABELT	CRONO	Lower		05.2000	05.2017	2022
CS.005.00	SABELT	GT	Lateral		05.2000	05.2017	2022
CS.006.00	KONIG	RE01	N/A		06.2000	06.2017	2022
CS.007.00	MOMO	CUP VTR	Lower		07.2000	07.2017	2022
CS.008.00	RACETECH	4000W	Lateral		07.2000	07.2017	2022
CS.009.00	RACETECH	9009	Lateral		07.2000	07.2017	2022
CS.010.00	RACETECH	9009HR	Lateral	X	07.2000	07.2017	2022
CS.011.00	RECARO	Profi SPG	Lateral		08.2000	08.2027	2032
CS.012.00	RECARO	SPG.N	Lateral		08.2000	08.2017	2022
CS.013.00	C-ONE CORPORATION	Interget	Lateral		09.2000	09.2017	2022
CS.014.00	RECARO	Profi SPA	Lateral		09.2000	09.2022	2027
CS.015.00	EKTOR	ISO 2000	Lateral		12.2000	12.2017	2022
CS.016.00	RECARO	pro racer SPA 80mm verbreitert	Lateral	X	12.2000	12.2017	2022
CS.017.00	TOYOTA BOSHOKU	AAR RAcIng-2 303	Lower		01.2001	01.2017	2022
CS.018.00	TOYOTA BOSHOKU	AAR Racing-2 302	Lower		01.2001	01.2017	2022
CS.019.00	TOYOTA BOSHOKU	AAR RAcIng-2 301	Lower		01.2001	01.2017	2022
CS.020.00	TOYOTA BOSHOKU	AAR RAcIng-2 300	Lower		01.2001	01.2017	2022
CS.021.01	ISOMAX	RMS	Lateral	X	01.2001	01.2017	2022
CS.022.01	MOMO	Start	Lower		03.2001	03.2017	2022

⁽¹⁾ The homologation end date represents the final date on which the products may be manufactured

⁽²⁾ The validity of the product must always be that which is indicated on the product homologation label. The dates in this column are the latest possible dates that can be shown on the homologation label

⁽³⁾ Please refer to the end of this section

HOMOL. NUMBER	BRAND	MODEL	SUPPORTS TO BE USED (LATERAL / LOWER / BACK)	S2000	START OF HOMOL.	END OF HOMOL. ⁽¹⁾	PRODUCT VALID UNTIL ⁽²⁾
CS.023.01	CARBOSYSTEMS	Safetycell	Not applicable		04.2001	04.2017	2022
CS.024.01	MOONCRAFT	Mooncraft S/No:2	Lateral		04.2001	04.2017	2022
CS.025.01	OMP	BIG HA/703 or WRC XL	Lateral		03.2001	03.2027	2032
CS.026.01	KINGDRAGON	Vega2	Lower		04.2001	04.2017	2022
CS.027.01	SHIN NAGOYA	Bride thrown FG603	Lateral		06.2001	06.2017	2022
CS.028.01	SHIN NAGOYA	Bride Divine FM302	Lateral		06.2001	06.2017	2022
CS.029.01	SHIN NAGOYA	Bride Divine FM303	Lateral		06.2001	06.2017	2022
CS.030.01	SHIN NAGOYA	Bride Divine FS301	Lateral		06.2001	06.2017	2022
CS.031.01	SHIN NAGOYA	Bride Divine FL301	Lateral		06.2001	06.2017	2022
CS.032.01	SHIN NAGOYA	Bride thrown FG601	Lateral		06.2001	06.2017	2022
CS.033.01	SHIN NAGOYA	Bride Divine FM301	Lateral		06.2001	06.2017	2022
CS.034.01	SHIN NAGOYA	Bride Divine FM304	Lateral		06.2001	06.2017	2022
CS.035.01	SHIN NAGOYA	Bride Divine FM305	Lateral		06.2001	06.2017	2022
CS.036.01	SHIN NAGOYA	Bride Divine FL303	Lateral		06.2001	06.2017	2022
CS.037.01	MOMO	MONTE CARLO	Lateral or Lower		06.2001	06.2017	2022
CS.038.01	SHIN NAGOYA	bride MARvel FG607	Lateral		06.2001	06.2017	2022
CS.039.01	SHIN NAGOYA	BRIDE FAME FM307	Lateral		06.2001	06.2017	2022
CS.040.01	MOMO	CUP HI-TECH	Lateral		08.2001	08.2017	2022
CS.041.01	MOMO	Nascar GT diablo	Lateral or Lower		08.2001	08.2017	2022
CS.042.01	OMP	WRC HA/705	Lateral		12.2001	12.2017	2022
CS.043.01	OMP	SPORT HA/649	Lower		12.2001	12.2017	2022
CS.044.01	OMP	RS HA/633	Lateral		12.2001	12.2017	2022
CS.045.01	OMP	ECO HA/644	Lower		12.2001	12.2017	2022
CS.046.01	MOMO	Monte Carlo 1 VTR	Lateral or Lower		12.2001	12.2017	2022
CS.047.02	KONIG	RS 1000 GFK	Lateral		01.2002	01.2017	2022
CS.048.01	MOMO	CUP 1	Lateral or Lower		12.2001	12.2017	2022
CS.050.01	MOMO	Acropolis 1 KC	Lateral		12.2001	12.2017	2022
CS.051.01	MOMO	Start 1 VTR	Lower		12.2001	12.2017	2022
CS.052.01	MOMO	CUP 2	Lateral		12.2001	12.2017	2022

⁽¹⁾ The homologation end date represents the final date on which the products may be manufactured

⁽²⁾ The validity of the product must always be that which is indicated on the product homologation label. The dates in this column are the latest possible dates that can be shown on the homologation label

⁽³⁾ Please refer to the end of this section

HOMOL. NUMBER	BRAND	MODEL	SUPPORTS TO BE USED (LATERAL / LOWER / BACK)	S2000	START OF HOMOL.	END OF HOMOL. ⁽¹⁾	PRODUCT VALID UNTIL ⁽²⁾
CS.053.02 ⁽³⁾	CORBEAU	Sprint	Lateral		01.2002	01.2017	2022
CS.054.02	KONIG	RE-02	Lateral		04.2002	04.2017	2022
CS.055.02	SABELT	Racer	Lower		05.2002	05.2017	2022
CS.056.02	TOORA	RACE	Lower		06.2002	06.2017	2022
CS.057.02 ⁽³⁾	BIMARCO	EXPERT	Lateral		07.2002	07.2017	2022
CS.058.02	BIMARCO	DAKAR	Lateral		07.2002	07.2017	2022
CS.059.02	TOORA	BASIC	Lower		07.2002	07.2017	2022
CS.060.02	TOORA	CONCEPT	Lateral		07.2002	07.2017	2022
CS.061.02	SABELT	ST	Lateral		09.2002	09.2017	2022
CS.062.02	RACETECH	4009W	Lateral		10.2002	10.2022	2027
CS.063.02	RACETECH	4009HR	Lateral	X	10.2002	10.2022	2027
CS.064.02	RACETECH	4009WHRV	Lateral AND back	X	10.2002	10.2017	2022
CS.065.02	RACETECH	4009HRV	Lateral AND back	X	10.2002	10.2017	2022
CS.066.02	TOORA	PROJECT CARBON	Lateral		12.2002	12.2017	2022
CS.067.02	TOORA	PROJECT VTR	Lateral		12.2002	12.2017	2022
CS.068.02	RECARO	PROFI SPG	Lateral		12.2002	12.2022	2027
CS.069.03	LICO	HURRICANE	Lateral		02.2003	02.2017	2022
CS.070.03	COBRA	MONACO S	Lower		02.2003	02.2017	2022
CS.071.03	DOME	DCM CS01	Lateral		02.2003	02.2017	2022
CS.072.03	TOORA	PROTEC	Lateral	X	04.2003	04.2017	2022
CS.073.03	TEE'S CORPORATION	BRIDE F38A	Lateral	X	06.2003	06.2017	2022
CS.074.03	OMP	RECORD 2	Lateral	X	07.2003	07.2017	2022
CS.075.03	RECARO	PRO RACER SPG XL	Lateral	X	08.2003	08.2017	2022
CS.076.03	RECARO	PRO RACER SPG VARIO	Lateral	X	08.2003	08.2017	2022
CS.077.03	MOTORDRIVE	PRO GRP/COMPOSITE	Lateral	(homologated with and without head support)	09.2003	09.2027	2032
CS.078.03	MOTORDRIVE	Pro WC2	Lateral		09.2003	09.2027	2032
CS.079.03	MOTORDRIVE	PRO HYBRID/CARBON	Lateral		09.2003	09.2027	2032
CS.080.03	ISOMAX	18PD	Lateral		10.2003	10.2017	2022

⁽¹⁾ The homologation end date represents the final date on which the products may be manufactured

⁽²⁾ The validity of the product must always be that which is indicated on the product homologation label. The dates in this column are the latest possible dates that can be shown on the homologation label

⁽³⁾ Please refer to the end of this section

HOMOL. NUMBER	BRAND	MODEL	SUPPORTS TO BE USED (LATERAL / LOWER / BACK)	S2000	START OF HOMOL.	END OF HOMOL. ⁽¹⁾	PRODUCT VALID UNTIL ⁽²⁾
CS.081.03	RECARO	POLE POSITION JAPAN	Lateral		11.2003	11.2017	2022
CS.082.03	OMP	RS P.T.	Lateral	X	12.2003	12.2017	2022
CS.083.03	SPARCO	CIRCUIT VTR	Lateral	X	12.2003	12.2017	2022
CS.084.03	SPARCO	EVO XL	Lateral		12.2003	12.2017	2022
CS.085.04	MOONCRAFT	GT COMPETITION II	Lateral		01.2004	01.2017	2022
CS.086.04 ⁽³⁾	RECARO	Profi SPG XL	Lateral		01.2004	01.2027	2032
CS.087.04	VROOM	SPORT	Lateral		01.2004	01.2017	2022
CS.088.04	VROOM	TOURING	Lateral	X	01.2004	01.2017	2022
CS.089.04	OMP	HTS	Lateral	X	01.2004	01.2017	2022
CS.090.04	RECARO	porsche PRo racer SPG VARIO	Lateral	X	01.2004	01.2017	2022
CS.091.04	SABELT	INDIANAPOLIS	Lateral	X	02.2004	02.2017	2022
CS.092.04	TEE'S CORPORATION	BRIDE F31A	Lateral		03.2004	03.2017	2022
CS.093.04	TOORA	RUNNER	Lateral		03.2004	03.2017	2022
CS.094.04	SPARCO	S-LIGHT	Lateral		03.2004	03.2017	2022
CS.095.04	RACETECH	9109HR	Lateral AND back	X	03.2004	03.2017	2022
CS.096.04	RACETECH	4009WHR	Lateral	X	03.2004	03.2022	2027
CS.097.04	RACETECH	4000WX	Lateral		03.2004	03.2017	2022
CS.098.04	TOORA	GARA	Lower		03.2004	03.2017	2022
CS.099.04	SPARCO	CIRCUIT S-LIGHT	Lateral	X	03.2004	03.2017	2022
CS.100.04	VELO RACING	APEX	Lateral	X	03.2004	03.2027	2032
CS.101.04	VELO RACING	GPT 3	Lateral		04.2004	04.2027	2032
CS.102.04	VELO RACING	GPT 2	Lateral		04.2004	04.2027	2032
CS.103.04	VELO RACING	GPT 1	Lateral		04.2004	04.2027	2032
CS.104.04	REITER	RE.002	Lateral	X	04.2004	04.2022	2027
CS.105.04	TEE'S CORPORATION	BRIDE F77A	Lateral	X	05.2004	05.2017	2022
CS.106.04	MOTORQUALITY	VTS 2	Lateral		05.2004	05.2017	2022
CS.107.04	MOTORQUALITY	VTS 1	Lateral		05.2004	05.2017	2022
CS.108.04	COBRA	IMO 4R	Lateral		05.2004	05.2017	2022

⁽¹⁾ The homologation end date represents the final date on which the products may be manufactured

⁽²⁾ The validity of the product must always be that which is indicated on the product homologation label. The dates in this column are the latest possible dates that can be shown on the homologation label

⁽³⁾ Please refer to the end of this section

HOMOL. NUMBER	BRAND	MODEL	SUPPORTS TO BE USED (LATERAL / LOWER / BACK)	S2000	START OF HOMOL.	END OF HOMOL. ⁽¹⁾	PRODUCT VALID UNTIL ⁽²⁾
CS.109.04	VELO RACING	VRP1 or PODIUM II	Lateral		05.2004	05.2027	2032
CS.110.04	SABELT	TITAN	Lateral		06.2004	06.2017	2022
CS.111.04	VELO RACING	APEX Carbon/K	Lateral	X	06.2004	06.2027	2032
CS.112.04	VELO RACING	APEX –XL Carbon/K	Lateral	X	06.2004	06.2027	2032
CS.113.04	VELO RACING	VRP1 Carbon/K or Podium II K/C	Lateral		06.2004	06.2027	2032
CS.114.04	VELO RACING	APEX XL	Lateral	X	06.2004	06.2027	2032
CS.115.04	TEE'S CORPORATION	BRIDE FZ380	Lateral	X	07.2004	07.2017	2022
CS.116.04	TEE'S CORPORATION	BRIDE FZ310	Lateral		07.2004	07.2017	2022
CS.117.04	OMP	RONCO 2 / TURINI / T-CLUB	Lower		07.2004	07.2017	2022
CS.118.04	TOORA	PROJECT 2	Lateral		07.2004	07.2017	2022
CS.119.04	OMP	MCC / PROTOTIPO	Lateral	X	08.2004	08.2027	2032
CS.120.04	OMP	HTS Fiberglass	Lateral	X	08.2004	08.2017	2022
CS.121.04	TOORA	CONCEPT LIGHT	Lateral		09.2004	09.2017	2022
CS.122.04	RECARO	POLE POSITION USA	Lateral		09.2004	09.2017	2022
CS.123.04	SPARCO	PRO WRC	Lateral		09.2004	09.2017	2022
CS.124.04	CORBEAU	Revolution 2K	Lateral	X	10.2004	10.2017	2022
CS.125.04	CORBEAU	Forza 2K	Lower		10.2004	10.2017	2022
CS.126.04	CORBEAU	Sprint 2K	Lateral		10.2004	10.2017	2022
CS.127.04	SPARCO	REV PLUS	Lateral		12.2004	12.2017	2022
CS.128.04	MOMO	T-FRAME EVO	Lower		12.2004	12.2017	2022
CS.129.04	RECARO	PRO RACER SPA HANS	Lateral	X	12.2004	12.2022	2027
CS.130.04	CORBEAU	Pro Series 2K	Lateral		12.2004	12.2017	2022
CS.131.04	GA RACING	SEP	Lateral	X	12.2004	12.2017	2022
CS.132.05	CORBEAU	Revenge	Lateral	X	01.2005	01.2017	2022
CS.133.05 ⁽³⁾	ROSSI SPORTS	Professional III	Lateral		01.2005	01.2017	2022
CS.134.05	MOONCRAFT	GT Competition III	Lateral		03.2005	03.2017	2022
CS.135.05	RECARO	PRO RACER SPG XL HANS	Lateral	X	05.2005	05.2027	2032
CS.136.05	GM RACING	PM00117 (for C5R and C6R only)	Lateral AND back		05.2005	05.2017	2022

⁽¹⁾ The homologation end date represents the final date on which the products may be manufactured

⁽²⁾ The validity of the product must always be that which is indicated on the product homologation label. The dates in this column are the latest possible dates that can be shown on the homologation label

⁽³⁾ Please refer to the end of this section

HOMOL. NUMBER	BRAND	MODEL	SUPPORTS TO BE USED (LATERAL / LOWER / BACK)	S2000	START OF HOMOL.	END OF HOMOL. ⁽¹⁾	PRODUCT VALID UNTIL ⁽²⁾
CS.137.05	SPARCO	CIRCUIT PRO	Lateral	X	06.2005	06.2017	2022
CS.138.05	NICK COMPETICION	CAVALLINO	Lateral		08.2005	08.2027	2032
CS.139.05	NICK COMPETICION	INDY	Lateral	X	08.2005	08.2017	2022
CS.140.05	REVERIE	XRC WIDE	Lateral	X	08.2005	08.2017	2022
CS.141.05	GM RACING	PM00117 ventilated (for C5R and C6R only)	Lateral AND back		08.2005	08.2017	2022
CS.142.05 ⁽³⁾	ROSSI SPORTS	Professional III	Lateral		09.2005	09.2017	2022
CS.143.05	OMP	Big Carbon	Lateral		10.2005	10.2017	2022
CS.144.05	STS	RACE I	Lower		10.2005	10.2017	2022
CS.145.05	SABELT	RACER DUO	Lateral or Lower		10.2005	10.2017	2022
CS.146.05	OMP	HTE CARBON	Lateral	X	11.2005	11.2027	2032
CS.147.05	SABELT	CH-F	Lateral		11.2005	11.2017	2022
CS.148.05	SABELT	TITAN CARBONIO	Lateral		11.2005	11.2017	2022
CS.149.05	SABELT	TITAN CARBONIO XL	Lateral		12.2005	12.2017	2022
CS.150.05	SABELT	TITAN XL	Lateral		12.2005	12.2017	2022
CS.151.06	RECARO	TOURING SPORT - GFRP	Lateral		01.2006	01.2022	2027
CS.152.06	RECARO	Rally sport - GFRP	Lateral		01.2006	01.2027	2032
CS.153.06	RECARO	Rally sport – WET CARBON	Lateral		01.2006	01.2017	2022
CS.154.06	RECARO	TOURING SPORT- WET CARBON	Lateral		01.2006	01.2017	2022
CS.155.06	SABELT	TAURUS XL	Lateral	X	02.2006	02.2017	2022
CS.156.06	SPARCO	CIRCUIT PRO VTR	Lateral	X	02.2006	02.2017	2022
CS.157.06	SABELT	TAURUS	Lateral	X	02.2006	02.2017	2022
CS.158.06	MOTORQUALITY	VTS 0 CARBON	Lateral	X	03.2006	03.2017	2022
CS.159.06 ⁽³⁾	GP RACE	TOP RALLY	Lateral		03.2006	03.2017	2022
CS.160.06	NISMO	GT PRO	Lateral	X	04.2006	04.2017	2022
CS.161.06	COBRA	Evolution HANS	Lateral	X	04.2006	04.2022	2027
CS.162.06	COBRA	Imola HANS	Lateral		04.2006	04.2022	2027
CS.163.06	COBRA	Suzuka HANS	Lateral		04.2006	04.2022	2027

⁽¹⁾ The homologation end date represents the final date on which the products may be manufactured

⁽²⁾ The validity of the product must always be that which is indicated on the product homologation label. The dates in this column are the latest possible dates that can be shown on the homologation label

⁽³⁾ Please refer to the end of this section

HOMOL. NUMBER	BRAND	MODEL	SUPPORTS TO BE USED (LATERAL / LOWER / BACK)	S2000	START OF HOMOL.	END OF HOMOL. ⁽¹⁾	PRODUCT VALID UNTIL ⁽²⁾
CS.164.06	SABELT	TAURUS CARBONIO	Lateral	X	04.2006	04.2017	2022
CS.165.06	TANIDA	JURAN GTR500	Lateral	X	04.2006	04.2017	2022
CS.166.06	RACETECH	1000	Lateral		05.2006	05.2027	2032
CS.167.06	RACETECH	9119HR	Lateral AND back	X	05.2006	05.2022	2027
CS.168.06	RACETECH	9119WHR	Lateral AND back	X	05.2006	05.2017	2022
CS.169.06	OMP	T-RS	Lateral or Lower		06.2006	06.2017	2022
CS.170.06	RECARO	PRO RACER SPA XL HANS	Lateral	X	07.2006	07.2022	2027
CS.171.06	COBRA	Sebring	Lateral	X	07.2006	07.2022	2027
CS.172.06	RECARO	PRO RACER SPA HANS PLUS	Lateral	X	10.2006	10.2017	2022
CS.173.06	TANIDA	JURAN GTX100	Lateral		10.2006	10.2017	2022
CS.174.06	TANIDA	JURAN GTR500C	Lateral	X	10.2006	10.2017	2022
CS.175.06	TANIDA	JURAN GTX600	Lateral	X	10.2006	10.2017	2022
CS.176.06	TANIDA	JURAN GTX600C	Lateral	X	10.2006	10.2017	2022
CS.177.06	OMP	WRC CARBON	Lateral		10.2006	10.2022	2027
CS.178.06	OMP	BIG CARBON 2	Lateral		10.2006	10.2022	2027
CS.179.06	OMP	ARS CARBON	Lower		10.2006	10.2022	2027
CS.180.06	SPARCO	SPRINT V	Lateral		11.2006	11.2017	2022
CS.181.06	SPARCO	EVO PLUS	Lateral		11.2006	11.2017	2022
CS.182.06	OMP	HTE CARBON XL	Lateral	X	12.2006	12.2027	2032
CS.183.06	OMP	WRC FIBERGLASS or WRE / FIRST-R	Lateral		12.2006	12.2027	2032
CS.184.06	OMP	HTE FIBERGLASS	Lateral	X	12.2006	12.2027	2032
CS.185.06	MOMO	T-CLUB	Lower		12.2006	12.2017	2022
CS.186.07	SABELT	GT3	Lateral		01.2007	01.2017	2022
CS.187.07	SABELT	TAURUS L	Lateral	X	01.2007	01.2017	2022
CS.188.07	MOMO	DAYTONA SAFARI	Lateral	X	01.2007	01.2027	2032
CS.189.07	MOMO	START 2007	Lateral		01.2007	01.2027	2032
CS.190.07	MOMO	SUPER CUP	Lateral		01.2007	01.2027	2032
CS.191.07	TURINI	HT107	Lateral		01.2007	01.2017	2022
CS.192.07	TURINI	TURINI	Lower		01.2007	01.2017	2022

⁽¹⁾ The homologation end date represents the final date on which the products may be manufactured

⁽²⁾ The validity of the product must always be that which is indicated on the product homologation label. The dates in this column are the latest possible dates that can be shown on the homologation label

⁽³⁾ Please refer to the end of this section

HOMOL. NUMBER	BRAND	MODEL	SUPPORTS TO BE USED (LATERAL / LOWER / BACK)	S2000	START OF HOMOL.	END OF HOMOL. ⁽¹⁾	PRODUCT VALID UNTIL ⁽²⁾
CS.193.07	SPARCO	TECNO GT	Lateral	X	02.2007	02.2017	2022
CS.194.07	GA RACING	EXPERT	Lateral		02.2007	02.2017	2022
CS.195.07 ⁽³⁾	NICK COMPETICION	EFE - UNO	Lateral	X	04.2007	04.2022	2027
CS.196.07	SPARCO	AIR	Lateral	X	05.2007	05.2017	2022
CS.197.07	SPARCO	PRO ADV	Lateral	X	05.2007	05.2017	2022
CS.198.07	RACEPRO	TARMAC	Lateral	X	05.2007	05.2017	2022
CS.199.07	RACEPRO	ARROW	Lateral		05.2007	05.2017	2022
CS.200.07	RACEPRO	RP	Lateral		05.2007	05.2017	2022
CS.201.07	STATUS RACING	LAGUNA	Lateral		05.2007	05.2017	2022
CS.202.07	TREBEN	516 VTR	Lateral		06.2007	06.2017	2022
CS.203.07	VROOM	ZERO	Lateral	X	09.2007	09.2017	2022
CS.204.07	MOMO	SAFARI / DAYTONA XL	Lateral	X	09.2007	09.2027	2032
CS.205.07	MOMO	SUPER CUP XL	Lateral		09.2007	09.2017	2022
CS.206.08	SABELT	CH-L	Lateral		03.2008	03.2017	2022
CS.207.08 ⁽³⁾	GP-RACE	TOP-CIRCUIT	Lateral	X	03.2008	03.2017	2022
CS.208.08 ⁽³⁾	GP-RACE	TOP RALLY LIGHT	Lateral		03.2008	03.2017	2022
CS.209.08	COBRA	MONACO PRO	Lateral		04.2008	04.2027	2032
CS.210.08	COBRA	SEBRING PRO	Lateral		06.2008	06.2022	2027
CS.211.08	D RACING	GT	Lateral		05.2008	05.2017	2022
CS.212.08	BIMARCO	FUTURA	Lateral		05.2008	05.2017	2022
CS.213.08 ⁽³⁾	BORDER MOTORSEATS	SP-4C	Lateral		05.2008	05.2017	2022
CS.214.08	REITER	RE.003	Lateral	X	07.2008	07.2022	2027
CS.215.08	SANDTLER	DAKAR	Lateral		09.2008	09.2017	2022
CS.216.08	SANDTLER	INDY	Lateral	X	09.2008	09.2017	2022
CS.217.08	SANDTLER	MONZA	Lateral	X	09.2008	09.2017	2022
CS.218.08	RACETECH	9129HR	Lateral AND back	X	10.2008	10.2017	2022
CS.219.08	COBRA	AERORACE	Lateral		10.2008	10.2022	2027
CS.220.08	MOONCRAFT	GT Competition - V	Lateral	X	10.2008	10.2017	2022

⁽¹⁾ The homologation end date represents the final date on which the products may be manufactured

⁽²⁾ The validity of the product must always be that which is indicated on the product homologation label. The dates in this column are the latest possible dates that can be shown on the homologation label

⁽³⁾ Please refer to the end of this section

HOMOL. NUMBER	BRAND	MODEL	SUPPORTS TO BE USED (LATERAL / LOWER / BACK)	S2000	START OF HOMOL.	END OF HOMOL. ⁽¹⁾	PRODUCT VALID UNTIL ⁽²⁾
CS.221.08	SPARCO	SUPERCARBON	Lateral	X	10.2008	10.2017	2022
CS.222.08	ATECH	ETS	Lateral		11.2008	11.2027	2032
CS.223.08	ATECH	PERFORMANCE	Lateral	X	11.2008	11.2027	2032
CS.224.08	SANDTLER	Roadster	Lateral		11.2008	11.2017	2022
CS.225.09	LOTUS CARS	LOTUS SPORT GT CARBON	Lateral - Specific		02.2009	02.2017	2022
CS.226.09	ATECH	EXTREME S2	Lateral	X	05.2009	05.2027	2032
CS.227.09	STATUS RACING	RING	Lateral		05.2009	05.2017	2022
CS.228.09	NISMO	GT PRO II	Lateral	X	06.2009	06.2017	2022
CS.229.09	OMP	RS – P.T.	Lateral	X	06.2009	06.2027	2032
CS.230.09	OMP	HTE FIBERGLASS XL	Lateral	X	06.2009	06.2027	2032
CS.231.09	LOTUS CARS	LOTUS SPORT GT	Lateral		06.2009	06.2017	2022
CS.232.09	LOTUS CARS	LOTUS SPORT CARBON GT2	Lateral		06.2009	06.2017	2022
CS.233.10	SPARCO	PRO ADV CARBON	Lateral	X	01.2010	01.2017	2022
CS.234.10	SABELT	GT-100	Lateral		01.2010	01.2017	2022
CS.235.10	MOONCRAFT	GT COMPETITION-V+	Lateral	X	02.2010	02.2017	2022
CS.236.10	SPARCO	CIRCUIT PLUS	Lateral	X	02.2010	02.2017	2022
CS.237.10	SABELT	TITAN CARBONIO XXL	Lateral		05.2010	05.2017	2022
CS.238.10	COBRA	SEBRING PRO ULTRA LIGHT	Lateral	X	05.2010	05.2027	2032
CS.239.10	SPARCO	PRO 2000 PLUS	Lateral		05.2010	05.2017	2022
CS.240.10	R.C.C.	VICTORY	Lateral	X	07.2010	07.2017	2022
CS.241.10	BMW	SAFETY SEAT II (M3 E92 LMGT2 only)	Lateral AND back	X	07.2010	07.2017	2022
CS.242.10	TOYOTA BOSHOKU	TB RACING MSH001	Lateral	X	10.2010	10.2022	2027
CS.243.10	OMP	T-RS	Lateral or Lower		10.2010	10.2027	2032
CS.244.10	SPARCO	SPORT	Lateral		10.2010	10.2017	2022
CS.245.10	SPARCO	SPORT CF	Lateral		10.2010	10.2017	2022
CS.246.11	MERCEDES-AMG	gt3 safety seatshell (Mercedes SLS AMG GT3 only)	Lateral AND back	X	03.2011	03.2022	2027
CS.247.11	ATECH	NORTH	Lateral	X	03.2011	03.2027	2032

⁽¹⁾ The homologation end date represents the final date on which the products may be manufactured

⁽²⁾ The validity of the product must always be that which is indicated on the product homologation label. The dates in this column are the latest possible dates that can be shown on the homologation label

⁽³⁾ Please refer to the end of this section

HOMOL. NUMBER	BRAND	MODEL	SUPPORTS TO BE USED (LATERAL / LOWER / BACK)	S2000	START OF HOMOL.	END OF HOMOL. ⁽¹⁾	PRODUCT VALID UNTIL ⁽²⁾
CS.248.11	NISMO	GT PRO III	Lateral	X	05.2011	05.2017	2022
CS.249.11	TILLET	B6 F	Lateral		05.2011	05.2022	2027
CS.250.11	PRATT & MILLER	PM-0221 (for ZR1 GT2,C6.R GT1, Camaro GT and CTS-V only)	Lateral AND back		06.2011	06.2017	2022
CS.251.11	BRIDE	FZ670	Lateral		06.2011	06.2017	2022
CS.252.11	BRIDE	FZ910	Lateral		06.2011	06.2017	2022
CS.253.11	SPARCO	ERGO L VTR (homologated with and without head support)	Lateral		06.2011	06.2017	2022
CS.254.11	SPARCO	ERGO M VTR (homologated with and without head support)	Lateral		06.2011	06.2017	2022
CS.255.11	BRIDE	FZ210	Lateral		07.2011	07.2017	2022
CS.256.11	BRIDE	FZ420	Lateral		07.2011	07.2017	2022
CS.257.11	KONIG	RS 4000	Lateral	X	07.2011	07.2017	2022
CS.258.11	SPARCO	ERGO S VTR (homologated with and without head support)	Lateral		10.2011	10.2017	2022
CS.259.11	BRIDE	FZ410	Lateral		10.2011	10.2017	2022
CS.260.11	BRIDE	FZ770	Lateral	X	10.2011	10.2017	2022
CS.261.11	BIMARCO	GRIP	Lateral	X	12.2011	12.2017	2022
CS.262.11	RACETECH	4119HRW	Lateral OR Lateral and back	X	12.2011	12.2027	2032
CS.263.12	OMP	HTE 400	Lateral	X	01.2012	01.2027	2032
CS.264.12	SABELT	GT-200	Lateral		01.2012	01.2017	2022
CS.265.12	SABELT	GT-300	Lateral	X	01.2012	01.2017	2022
CS.266.12	TILLET	B7-40	Lateral		02.2012	02.2017	2022
CS.267.12	TILLET	B7-44	Lateral		02.2012	02.2017	2022
CS.268.12	PLANET KART CROSS	NO LIMIT MX1	Lateral		03.2012	03.2017	2022
CS.269.12	RACETECH	4119thr	Lateral AND back	X	03.2012	03.2027	2032
CS.270.12	RACETECH	4119wthr	Lateral AND back	X	03.2012	03.2027	2032
CS.271.12	OMP	TRS XL	Lateral		04.2012	04.2027	2032
CS.272.12	PRAGA	PRAGA SEAT ULTRA LIGHT	Lateral		04.2012	04.2017	2022
CS.273.12	RACETECH	9119thr	Lateral AND back	X	06.2012	06.2027	2032

⁽¹⁾ The homologation end date represents the final date on which the products may be manufactured

⁽²⁾ The validity of the product must always be that which is indicated on the product homologation label. The dates in this column are the latest possible dates that can be shown on the homologation label

⁽³⁾ Please refer to the end of this section

HOMOL. NUMBER	BRAND	MODEL	SUPPORTS TO BE USED (LATERAL / LOWER / BACK)	S2000	START OF HOMOL.	END OF HOMOL. ⁽¹⁾	PRODUCT VALID UNTIL ⁽²⁾
CS.274.12	MIRCO	MIRCO GT	Lateral		07.2012	07.2027	2032
CS.275.12	SPARCO	PRIMO TGS	Lateral		08.2012	08.2017	2022
CS.276.12	MIRCO	MIRCO RS2	Lateral	X	08.2012	08.2027	2032
CS.277.12	MOMO	LESMO ONE	Lateral	X	09.2012	09.2022	2027
CS.278.12	RACETECH	9119Wthr	Lateral AND back	X	10.2012	10.2027	2032
CS.279.12	VROOM	PROFESSIONAL	Lateral AND back	X	10.2012	10.2017	2022
CS.280.12	MOMO	LESMO ONE XL	Lateral	X	10.2012	10.2022	2027
CS.281.12	TRP CO., LTD.	RST-100	Lateral		11.2012	10.2017	2022
CS.282.12	SABELT	GT-200 XXL	Lateral		12.2012	12.2017	2022
CS.283.12	SABELT	GT-300 XXL	Lateral	X	12.2012	12.2017	2022
CS.284.12	HRX	HR-V0	Lateral	X	12.2012	12.2022	2027
CS.285.13	BPS RALLYE	HIGH TECH 01	Lateral	X	01.2013	01.2018	2023
CS.286.13	TILLETT	B6 F XL	Lateral		02.2013	02.2018	2023
CS.287.13	OMP	HGT	Lateral	X	02.2013	02.2028	2033
CS.288.13	BRIDE	FZ390	Lateral	X	05.2013	05.2018	2023
CS.289.13	BRIDE	F39A	Lateral	X	05.2013	05.2018	2023
CS.290.13	STATUS RACING	RING GT-X	Lateral		05.2013	05.2018	2023
CS.291.13	TOYOTA BOSHOKU	TB RACING MSH002	Lateral		05.2013	05.2023	2028
CS.292.13	OMP	TRS-XS	Lateral or Lower		05.2013	05.2023	2028
CS.293.13	OMP	HRC or HRC-R Air	Lateral	X	06.2013	06.2028	2033
CS.294.13	MIRCO	MIRCO RS1	Lateral	X	07.2013	07.2028	2033
CS.295.13	SPARCO	NEO	Lateral		09.2013	09.2018	2023
CS.296.13	OMP	HRC-D	Lateral	X	11.2013	11.2023	2028
CS.297.13	MIRCO	MIRCO RTS	Lateral		12.2013	12.2023	2028
CS.298.13	SPARCO	pro adv ts	Lateral	X	12.2013	12.2023	2028
CS.299.14	GP-RACE	PRO RALLY	Lateral		01.2014	01.2019	2024
CS.300.14	GP-RACE	PRO LIGHT	Lateral		01.2014	01.2019	2024
CS.301.14	GP-RACE	PRO CIRCUIT	Lateral	X	01.2014	01.2019	2024

⁽¹⁾ The homologation end date represents the final date on which the products may be manufactured

⁽²⁾ The validity of the product must always be that which is indicated on the product homologation label. The dates in this column are the latest possible dates that can be shown on the homologation label

⁽³⁾ Please refer to the end of this section

HOMOL. NUMBER	BRAND	MODEL	SUPPORTS TO BE USED (LATERAL / LOWER / BACK)	S2000	START OF HOMOL.	END OF HOMOL. ⁽¹⁾	PRODUCT VALID UNTIL ⁽²⁾
CS.302.14	SCHUURMAN FRANCE	CROSSRACE/ ROSCROSS	Lateral		02.2014	02.2019	2024
CS.303.14	SPARCO	CIRCUIT II	Lateral	X	05.2014	05.2019	2024
CS.304.14	SPARCO	PRO2000 II	Lateral or Lower		06.2014	06.2019	2024
CS.305.14	RECARO	PRO RACER SPG	Lateral	X	07.2014	07.2029	2034
CS.306.14	TRP CO., LTD.	RST-200	Lateral		08.2014	08.2019	2024
CS.307.14	OMP	HRC FIBERGLASS AIR	Lateral	X	08.2014	08.2024	2029
CS.308.14	SPARCO	DRIFTING	Lateral		08.2014	08.2019	2024
CS.309.14	STATUS RACING	GT-X WIDE	Lateral		09.2014	09.2019	2024
CS.310.14	STATUS RACING	GT MID	Lateral		09.2014	09.2019	2024
CS.311.14	VROOM	ANTISHOCK	Lateral	X	10.2014	10.2019	2024
CS.312.14	TRP CO., LTD.	RST-300	Lateral		11.2014	11.2029	2034
CS.313.14	OMP	HRC FIBERGLASS AIR XL	Lateral	X	11.2014	11.2029	2034
CS.314.14	SPARCO	SPRINT L	Lateral or Lower		11.2014	11.2029	2034
CS.315.14	MOTORDRIVE	ENDURANCE COMPOSITE	Lateral	X	12.2014	12.2029	2034
CS.316.14	MOTORDRIVE	ENDURANCE HYBRID/CARBON	Lateral	X	12.2014	12.2029	2034
CS.317.14	MOTORDRIVE	RACE COMPOSITE	Lateral	X	12.2014	12.2029	2034
CS.318.14	MOTORDRIVE	RACE HYBRID/CARBON	Lateral	X	12.2014	12.2029	2034
CS.319.14	RECARO	POLE POSITION N.G. / FURIOUS N.G.	Lateral - Homologated This seat model is only authorised to be used with homologated seat support		12.2014	12.2029	2034
CS.320.15	TRP CO., LTD.	RST-400	Lateral	X	01.2015	01.2020	2025
CS.321.15	MOONCRAFT	GT COMPETITION-VI	Lateral	X	01.2015	01.2020	2025
CS.322.15	SPARCO	PRO 2000 LF	Lateral or Lower		03.2015	03.2020	2025
CS.323.15	SPARCO	EVO LF	Lateral		03.2015	03.2020	2025
CS.324.15	BIMARCO	EXPERT 2	Lateral - Homologated This seat model is only authorised to be used with homologated seat support		03.2015	03.2020	2025
CS.325.15	SPARCO	CIRCUIT LF	Lateral	X	03.2015	03.2020	2025
CS.326.15	REVERIE	SUPER SPORTS (homologated with and without head support)	Lateral		05.2015	05.2025	2030
CS.327.15	REVERIE	SUPER SPORTS B SINGLE SKIN	Lateral		07.2015	07.2025	2030
CS.328.15	SPARCO	DRIFTING II	Lateral		08.2015	08.2020	2025

⁽¹⁾ The homologation end date represents the final date on which the products may be manufactured

⁽²⁾ The validity of the product must always be that which is indicated on the product homologation label. The dates in this column are the latest possible dates that can be shown on the homologation label

⁽³⁾ Please refer to the end of this section

HOMOL. NUMBER	BRAND	MODEL	SUPPORTS TO BE USED (LATERAL / LOWER / BACK)	S2000	START OF HOMOL.	END OF HOMOL. ⁽¹⁾	PRODUCT VALID UNTIL ⁽²⁾
CS.329.15	ORECA	START FG EDITION	Lateral		11.2015	01.2020	2025
CS.330.15	ORECA	PRO HEAD RESTRAINT	Lateral	X	11.2015	10.2017	2022
CS.331.15	TRP CO., LTD.	RST-500	Lateral		11.2015	11.2030	2035
CS.332.15	SPARCO	SPRINT	Lateral or Lower		12.2015	12.2035	2040
CS.333.15	BRIDE	H 31 A	Lateral		12.2015	12.2020	2025
CS.334.16	ALFA RACING	ACI 01	Lateral		02.2016	02.2026	2031
CS.335.16	CORBEAU	PREDATOR	Lateral - Homologated	X	02.2016	02.2021	2026
CS.336.16	GP-RACE	R7	Lateral	X	03.2016	03.2026	2031
CS.337.16	BRIDE	HZ310	Lateral		06.2016	06.2021	2026
CS.338.16	XTA SOLUTIONS	ONIT PRO COMPOSITE	Lateral	X	07.2016	07.2021	2026
CS.339.16	SPARCO	REV LF	Lateral		07.2016	07.2021	2026
CS.340.16	SPARCO	REV II LF	Lateral		08.2016	08.2021	2026
CS.341.16	SPARCO	EVO II US LF	Lateral		09.2016	09.2021	2026
CS.342.16	SPARCO	EVO II LF	Lateral		10.2016	10.2021	2026
CS.343.16	SPARCO	ERGO M LF (homologated with and without head support)	Lateral		11.2016	11.2021	2026
CS.344.16	SPARCO	ERGO L LF (homologated with and without head support)	Lateral		11.2016	11.2021	2026
CS.345.16	SPARCO	CIRCUIT II AIR CARBON	Lateral	X	11.2016	11.2021	2026
CS.346.16	SABELT	TAURUS	Lateral	X	12.2016	12.2026	2031
CS.347.16	SABELT	TAURUS MAX	Lateral	X	12.2016	12.2026	2031
CS.348.16	SABELT	AB 124	Lateral		12.2016	12.2021	2026
CS.349.16	SABELT	TITAN	Lateral		12.2016	12.2021	2026
CS.350.16	SABELT	TITAN MAX	Lateral		12.2016	12.2026	2031
CS.351.17	SPARCO	PRO ADV CF	Lateral	X	02.2017	02.2022	2027
CS.352.17	TILLET	B7-44-17	Lateral		02.2017	02.2022	2027
CS.353.17	SPARCO	PRO ADV LF	Lateral	X	02.2017	02.2022	2027
CS.354.17	CORBEAU	REVENGE X	Lateral	X	03.2017	03.2027	2032
CS.355.17	SABELT	GT3	Lateral	X	03.2017	03.2027	2032
CS.356.17	TILLET	B7-40-17	Lateral		03.2017	03.2022	2027

⁽¹⁾ The homologation end date represents the final date on which the products may be manufactured

⁽²⁾ The validity of the product must always be that which is indicated on the product homologation label. The dates in this column are the latest possible dates that can be shown on the homologation label

⁽³⁾ Please refer to the end of this section

HOMOL. NUMBER	BRAND	MODEL	SUPPORTS TO BE USED (LATERAL / LOWER / BACK)	S2000	START OF HOMOL.	END OF HOMOL. ⁽¹⁾	PRODUCT VALID UNTIL ⁽²⁾
CS.357.17	SPARCO	ALPHA	Lateral or Lower		03.2017	03.2022	2027
CS.358.17	CORBEAU	PRO SERIES X	Lateral		03.2017	03.2027	2032
CS.359.17	COBRA	SUZUKA T GT	Lateral		03.2017	03.2027	2032
CS.360.17	COBRA	SUZUKA T STD	Lateral		03.2017	03.2027	2032
CS.361.17	COBRA	EVOLUTION T GT	Lateral	X	03.2017	03.2027	2032
CS.362.17	COBRA	EVOLUTION T STD	Lateral	X	03.2017	03.2027	2032
CS.363.17	COBRA	IMOLA T GT	Lateral		03.2017	03.2027	2032
CS.364.17	COBRA	IMOLA T STD	Lateral		03.2017	03.2027	2032
CS.365.17	COBRA	SEBRING T GT	Lateral	X	03.2017	03.2027	2032
CS.366.17	COBRA	SEBRING T STD	Lateral	X	03.2017	03.2027	2032
CS.367.17	VROOM	ROOKIE	Lateral		05.2017	05.2022	2027
CS.368.17	SABELT	TAURUS TG M	Lateral	X	06.2017	06.2027	2032
CS.369.17	NICK COMPETICION	PRO-NK	Lateral	X	06.2017	06.2027	2032
CS.370.17	SABELT	TITAN MAX CARBON	Lateral		06.2017	06.2022	2027
CS.371.17	BIMARCO	FUTURA 2	Lateral		07.2017	07.2022	2027
CS.372.17	HRX	GORDON	Lateral		07.2017	07.2022	2027
CS.373.17	SPARCO	EVO QRT	Lateral		07.2017	07.2027	2032
CS.374.17	TILLET	B6 XL SCREAMER	Lateral		09.2017	09.2022	2027
CS.375.17	TILLET	B6 XL 43 SCREAMER	Lateral		09.2017	09.2022	2027
CS.376.17	TILLET	B6 SCREAMER	Lateral		09.2017	09.2022	2027
CS.377.17	TILLET	B6 40 SCREAMER	Lateral		09.2017	09.2022	2027
CS.378.17	SPARCO	QRT-V	Lateral	X	10.2017	10.2022	2027
CS.379.17	TRP CO., LTD.	RST-600	Lateral		10.2017	10.2027	2032
CS.380.17	KOBRA	GOLEM	Lateral	X	10.2017	10.2022	2027
CS.381.17	MOMO	DAYTONA XXL	Lateral	X	10.2017	10.2027	2032
CS.382.17	MOMO	LESMO ONE XXL	Lateral	X	10.2017	10.2022	2027
CS.383.17	CORBEAU	SPRINT X	Lateral		11.2017	11.2027	2032
CS.384.17	CORBEAU	RXC	Lateral		11.2017	11.2027	2032
CS.385.17	CORBEAU	REVOLUTION X	Lateral	X	11.2017	11.2027	2032

⁽¹⁾ The homologation end date represents the final date on which the products may be manufactured

⁽²⁾ The validity of the product must always be that which is indicated on the product homologation label. The dates in this column are the latest possible dates that can be shown on the homologation label

⁽³⁾ Please refer to the end of this section

HOMOL. NUMBER	BRAND	MODEL	SUPPORTS TO BE USED (LATERAL / LOWER / BACK)	S2000	START OF HOMOL.	END OF HOMOL. ⁽¹⁾	PRODUCT VALID UNTIL ⁽²⁾
CS.386.17	KOBRA	ZORWAK	Lateral	X	11.2017	11.2022	2027
CS.387.17	SABELT	RACER DUO	Lateral or Lower		11.2017	11.2022	2027
CS.388.17	BIMARCO	DAKAR 2	Lateral	X	12.2017	12.2022	2027
CS.389.17	BIMARCO	GRIP 2	Lateral	X	12.2017	12.2022	2027
CS.390.18	REVERIE	9m RS	Lateral		01.2018	01.2023	2028
CS.391.18	SABELT	GT-PAD	Lateral	X	01.2018	01.2028	2033
CS.392.18	RECARO	RMS 2600A	Lateral	X	02.2018	02.2028	2033
CS.393.18	RECARO	RMS 2700G	Lateral	X	02.2018	02.2023	2028
CS.394.18	HRX	RACER XL	Lateral	X	03.2018	03.2023	2028
CS.395.18	TANIDA	JURAN GTX100	Lateral		04.2018	04.2028	2033
CS.396.18	TANIDA	JURAN GTX600	Lateral	X	04.2018	04.2023	2028
CS.397.18	SPARCO	QRT-R	Lateral		04.2018	04.2028	2033
CS.398.18	TILLETT	B7 XL	Lateral		05.2018	05.2023	2028
CS.399.18	KOBRA	MT 003	Lateral		06.2018	06.2023	2028
CS.400.18	SABELT	TAURUS M sl	Lateral	X	06.2018	06.2023	2028
CS.401.18	SABELT	TAURUS L sl	Lateral	X	07.2018	07.2023	2028
CS.402.18	RACETECH	RT4119WHR	Lateral AND back	X	07.2018	07.2028	2033
CS.403.18	BRAUM	FALCON X	Lower		07.2018	07.2023	2028
CS.404.18	BRIDE	FZ670	Lateral		10.2018	10.2023	2028
CS.405.18	BRIDE	FZ910	Lateral		10.2018	10.2023	2028
CS.406.18	MIRCO	RS7	Lateral	X	10.2018	10.2028	2033
CS.407.18	SPARCO	GRID Q	Lateral		11.2018	11.2028	2033
CS.408.18	SPARCO	Circuit ii qrt	Lateral	X	11.2018	11.2028	2033
CS.409.18	SPARCO	CIRCUIT QRT	Lateral	X	11.2018	11.2023	2028
CS.410.18	OMP	TRS X	Lateral or Lower		12.2018	12.2028	2033
CS.411.18	SPARCO	EVO II QRT	Lateral		12.2018	12.2023	2028
CS.412.19	BRIDE	H01A	Lateral	X	01.2019	01.2029	2034
CS.413.19	BRIDE	H02A	Lateral	X	01.2019	01.2029	2034
CS.414.19	BRIDE	HZ010	Lateral	X	01.2019	01.2029	2034

⁽¹⁾ The homologation end date represents the final date on which the products may be manufactured

⁽²⁾ The validity of the product must always be that which is indicated on the product homologation label. The dates in this column are the latest possible dates that can be shown on the homologation label

⁽³⁾ Please refer to the end of this section

HOMOL. NUMBER	BRAND	MODEL	SUPPORTS TO BE USED (LATERAL / LOWER / BACK)	S2000	START OF HOMOL.	END OF HOMOL. ⁽¹⁾	PRODUCT VALID UNTIL ⁽²⁾
CS.415.19	BRIDE	HZ020	Lateral	X	01.2019	01.2029	2034
CS.416.19	SPARCO	QRT-C	Lateral		01.2019	01.2024	2029
CS.417.19	SABELT	TAURUS XL sl	Lateral	X	02.2019	02.2024	2029
CS.418.19	SABELT	X-PAD CARBON	Lateral	X	02.2019	02.2029	2034
CS.419.19	SABELT	X-PAD	Lateral	X	03.2019	03.2029	2034
CS.420.19	TRP CO., LTD.	RST-700	Lateral		04.2019	04.2029	2034
CS.421.19	RACETECH	RT4100HR	Lateral	X	04.2019	04.2029	2034
CS.422.19	RACETECH	RT4100WTHR	Lateral	X	04.2019	04.2029	2034
CS.423.19	SPARCO	EVO S QRT or REV QRT	Lateral		06.2019	06.2029	2034
CS.424.19	SPARCO	PRO 2000 QRT	Lateral or Lower		06.2019	06.2029	2034
CS.425.19	SPARCO	PILOT QRT	Lateral	X	06.2019	06.2024	2029
CS.426.19	RACETECH	RT4100	Lateral		07.2019	07.2029	2034
CS.427.19	BRIDE	HZ030	Lateral		07.2019	07.2029	2034
CS.428.19	BRIDE	H03A	Lateral		07.2019	07.2029	2034
CS.429.19	TRP CO., LTD.	RST-800	Lateral		08.2019	08.2029	2034
CS.430.19	TRP CO., LTD.	RST-900	Lateral	X	08.2019	08.2029	2034
CS.431.19	SPARCO	CIRCUIT QRT 20	Lateral	X	08.2019	08.2029	2034
CS.432.19	SPARCO	EVO L QRT	Lateral		08.2019	08.2029	2034
CS.433.19	SPARCO	EVO XL QRT	Lateral		08.2019	08.2029	2034
CS.434.19	SPARCO	PRO ADV QRT	Lateral	X	09.2019	09.2029	2034
CS.435.19	RACETECH	RT9119HRW	Lateral AND back	X	10.2019	10.2029	2034
CS.436.19	RACETECH	RT4100WT	Lateral		10.2019	10.2029	2034
CS.437.19	SPARCO	QRT C 20	Lateral		10.2019	10.2029	2034
CS.438.19	SPARCO	PRO ADV GT	Lateral		11.2019	11.2024	2029
CS.439.19	GP-RACE	R3	Lateral		12.2019	12.2029	2034
CS.440.19	OMP	HTE EVO VTR	Lateral	X	12.2019	12.2029	2034
CS.441.19	COBRA	SEBRING T LP STD	Lateral	X	12.2019	12.2024	2029
CS.442.19	COBRA	SEBRING T LP GT	Lateral	X	12.2019	12.2024	2029
CS.443.20	BRIDE	BRIDE HBZ10	Lateral		01.2020	01.2025	2030

⁽¹⁾ The homologation end date represents the final date on which the products may be manufactured

⁽²⁾ The validity of the product must always be that which is indicated on the product homologation label. The dates in this column are the latest possible dates that can be shown on the homologation label

⁽³⁾ Please refer to the end of this section

HOMOL. NUMBER	BRAND	MODEL	SUPPORTS TO BE USED (LATERAL / LOWER / BACK)	S2000	START OF HOMOL.	END OF HOMOL. ⁽¹⁾	PRODUCT VALID UNTIL ⁽²⁾
CS.444.20	BRIDE	BRIDE HB1A	Lateral		01.2020	01.2025	2030
CS.445.20	BRIDE	BRIDE HCZ10	Lateral		01.2020	01.2025	2030
CS.446.20	BRIDE	BRIDE HBZ20	Lateral	X	01.2020	01.2025	2030
CS.447.20	BRIDE	BRIDE HB2A	Lateral	X	01.2020	01.2025	2030
CS.448.20	BRIDE	BRIDE HC1A	Lateral		01.2020	01.2025	2030
CS.449.20	BRIDE	BRIDE HA1A	Lateral		01.2020	01.2030	2035
CS.450.20	BRIDE	BRIDE HAZ10	Lateral		01.2020	01.2030	2035
CS.451.20	ATECH	TARGET XL	Lateral		01.2020	01.2030	2035
CS.452.20	GP-RACE	S7	Lateral	X	02.2020	02.2030	2035
CS.453.20	GP-RACE	S5	Lateral		02.2020	02.2030	2035
CS.454.20	VROOM	ANTISHOCK III	Lateral	X	02.2020	02.2025	2030
CS.455.20	OMP	HTE EVO carbon	Lateral	X	04.2020	04.2030	2035
CS.456.20	RECARO	PODIUM CF	Lateral		08.2020	08.2025	2030
CS.457.20	TRP CO., LTD.	RST-1100	Lateral	X	09.2020	09.2030	2035
CS.458.20	RECARO	X2679X12001	Lateral AND back	X	10.2020	10.2025	2030
CS.459.20	SPARCO	LEGEND	Lower		10.2020	10.2025	2030
CS.460.20	RECARO	PRO RACER SPA	Lateral	X	10.2020	11.2025	2030
CS.461.20	RECARO	PRO RACER SPA XL	Lateral	X	11.2020	11.2030	2035
CS.462.20	FLB	RACE-02M	Lateral		11.2020	11.2030	2035
CS.463.20	FLB	PRO-02m	Lateral	X	11.2020	11.2030	2035
CS.464.20	FLB	CLUB EVO	Lateral		11.2020	11.2030	2035
CS.465.20	SPARCO	QRT K	Lateral		12.2020	12.2030	2035
CS.466.21	FLB	RACE-02L	Lateral		01.2021	01.2031	2036
CS.467.21	SPARCO	CIRCUIT QRT m12	Lateral	X	01.2021	01.2026	2031
CS.468.21	RECARO	PRO RACER XL-ORV	Lateral		01.2021	01.2026	2031
CS.469.21	THRASH RACING	race spec nu	Lateral		06.2021	06.2026	2031
CS.470.21	INORIZA	puma open	Lateral		10.2021	10.2026	2031
CS.471.21	INORIZA	puma	Lateral	X	11.2021	11.2026	2031
CS.472.21	BIMARCO	MATRIX	Lateral	X	12.2021	12.2026	2031

⁽¹⁾ The homologation end date represents the final date on which the products may be manufactured

⁽²⁾ The validity of the product must always be that which is indicated on the product homologation label. The dates in this column are the latest possible dates that can be shown on the homologation label

⁽³⁾ Please refer to the end of this section

HOMOL. NUMBER	BRAND	MODEL	SUPPORTS TO BE USED (LATERAL / LOWER / BACK)	S2000	START OF HOMOL.	END OF HOMOL. ⁽¹⁾	PRODUCT VALID UNTIL ⁽²⁾
CS.473.21	BIMARCO	HAMER PRO	Lateral	X	12.2021	12.2026	2031
CS.474.21	BIMARCO	COBRA PRO	Lateral		12.2021	12.2026	2031
CS.475.21	TILLET	B6-SCREAMER-2021	Lateral		12.2021	12.2026	2031
CS.476.21	TILLET	B6-40-SCREAMER-2021	Lateral		12.2021	12.2026	2031
CS.477.21	TILLET	B6-XL-SCREAMER-2021	Lateral		12.2021	12.2026	2031
CS.478.21	TILLET	B6-XL-43-SCREAMER-2021	Lateral		12.2021	12.2026	2031
CS.479.21	TILLET	B7-40-2021	Lateral		12.2021	12.2026	2031
CS.480.21	TILLET	B7-44-2021	Lateral		12.2021	12.2026	2031
CS.481.21	TILLET	B7-XL-2021	Lateral		12.2021	12.2026	2031
CS.482.22	ATECH	TARGET CARBON	Lateral		02.2022	02.2027	2032
CS.483.22	REITER	RCS002	Lateral	X	02.2022	02.2027	2032
CS.484.22	REITER	RCS003	Lateral	X	02.2022	02.2027	2032
CS.485.22	SPARCO	EVO CARBON	Lateral		07.2022	07.2027	2032
CS.486.22	SPARCO	EVO L CARBON	Lateral		07.2022	07.2027	2032
CS.487.22	SPARCO	EVO XL CARBON	Lateral		09.2022	09.2027	2032
CS.488.22	MIRCO	RTX-7	Lateral		10.2022	10.2027	2032
CS.489.22	BIMARCO	PHANToM	Lateral	X	10.2022	10.2027	2032
CS.490.22	TILLET	C1-41	Lateral	X	11.2022	11.2027	2032
CS.491.22	TILLET	C1-44	Lateral		11.2022	11.2027	2032
CS.492.22	TILLET	C1XL-44	Lateral		11.2022	11.2027	2032
CS.493.22	TILLET	C1XL-47	Lateral		11.2022	11.2027	2032
CS.494.22	SPARCO	CIRCUIT I CARBON	Lateral	X	11.2022	11.2027	2032
CS.495.22	SPARCO	CIRCUIT II CARBON	Lateral	X	11.2022	11.2027	2032
CS.496.22	MIRCO	RTS-2	Lateral		12.2022	12.2027	2032
CS.497.22	MIRCO	CLASSIC	Lateral		12.2022	12.2027	2032
CS.498.22	RECARO	PODIUM GF	Lateral		12.2022	12.2027	2032
CS.499.22	SPARCO	ULTRA	Lateral		12.2022	12.2027	2032
CS.500.22	SPARCO	ULTRA CARBON	Lateral		12.2022	12.2027	2032
CS.501.22	OMP	CW0092	Lateral		12.2022	12.2027	2032

⁽¹⁾ The homologation end date represents the final date on which the products may be manufactured

⁽²⁾ The validity of the product must always be that which is indicated on the product homologation label. The dates in this column are the latest possible dates that can be shown on the homologation label

⁽³⁾ Please refer to the end of this section

HOMOL. NUMBER	BRAND	MODEL	SUPPORTS TO BE USED (LATERAL / LOWER / BACK)	S2000	START OF HOMOL.	END OF HOMOL. ⁽¹⁾	PRODUCT VALID UNTIL ⁽²⁾
CS.502.22	SPEED	LMT 10044	Lateral		12.2022	12.2027	2032
CS.503.22	RECARO	POLE POSITION	Lateral		12.2022	12.2027	2032
CS.504.22	RECARO	PROFI XL	Lateral		12.2022	12.2027	2032
CS.505.22	OMP	CW0093	Lateral		12.2022	12.2027	2032
CS.506.22	MOTORDRIVE	PRO III	Lateral		12.2022	12.2027	2032
CS.507.22	MOTORDRIVE	PRO IV	Lateral		12.2022	12.2027	2032
CS.508.22	NICK COMPETICION	EVOLUZIONE	Lateral	X	12.2022	12.2027	2032
CS.509.22	RECARO	PRO RACER ORV ULTRA RCF INFUSION	Lateral		12.2022	12.2027	2032

⁽¹⁾ The homologation end date represents the final date on which the products may be manufactured

⁽²⁾ The validity of the product must always be that which is indicated on the product homologation label. The dates in this column are the latest possible dates that can be shown on the homologation label

⁽³⁾ Please refer to the end of this section

HOMOLOGATIONS OF COMPETITION SEATS / WARNING**IMPORTANT**

For safety reasons, please note that the homologation of the following competition seat, whatever the validity deadline, is withdrawn **with immediate effect**.

Manufacturer: **KINGDRAGON - FIVE RACING**

Model: **Master VTR**

Homologation n° : **.CS.912.98**

As this seat **can no longer be considered as complying with the standard FIA 8855-1999 Competition Seats**, its use is prohibited in all cases in which compliance with the above-mentioned standards is mandatory.

⁽¹⁾ The homologation end date represents the final date on which the products may be manufactured

⁽²⁾ The validity of the product must always be that which is indicated on the product homologation label. The dates in this column are the latest possible dates that can be shown on the homologation label

⁽³⁾ Please refer to the end of this section

IMPORTANT

For safety reasons, please note that the homologation of the following competition seat, whatever the validity deadline, is withdrawn **with immediate effect**.

Manufacturer: **EKTOR**

Model: **Runner 2000**

Homologation n° : **.CS.972.99**

As this seat **can no longer be considered as complying with the standard FIA 8855-1999 Competition Seats**, its use is prohibited in all cases in which compliance with the above-mentioned standards is mandatory.

IMPORTANT

For safety reasons, please note that the homologation of the following competition seat, whatever the validity deadline, is withdrawn **with immediate effect**.

Manufacturer: **COBRA SEATS**

Model: **Monaco**

Homologation n° : **.CS.980.99**

As this seat **can no longer be considered as complying with the standard FIA 8855-1999 Competition Seats**, its use is prohibited in all cases in which compliance with the above-mentioned standards is mandatory.

⁽¹⁾ The homologation end date represents the final date on which the products may be manufactured

⁽²⁾ The validity of the product must always be that which is indicated on the product homologation label. The dates in this column are the latest possible dates that can be shown on the homologation label

⁽³⁾ Please refer to the end of this section

IMPORTANT

For safety reasons, please note that the homologation of the following competition seat, whatever the validity deadline, is withdrawn **with immediate effect**.

Manufacturer: **CORBEAU SEATS**

Model: **Forza**

Homologation n° : **.CS.992.00**

As this seat **can no longer be considered as complying with the standard FIA 8855-1999 Competition Seats**, its use is prohibited in all cases in which compliance with the above-mentioned standards is mandatory.

IMPORTANT

For safety reasons, please note that the homologation of the following competition seat, whatever the validity deadline, is withdrawn **with immediate effect**.

Manufacturer: **CORBEAU SEATS**

Model: **Pro series**

Homologation n° : **.CS.993.00**

As this seat **can no longer be considered as complying with the standard FIA 8855-1999 Competition Seats**, its use is prohibited in all cases in which compliance with the above-mentioned standards is mandatory.

⁽¹⁾ The homologation end date represents the final date on which the products may be manufactured

⁽²⁾ The validity of the product must always be that which is indicated on the product homologation label. The dates in this column are the latest possible dates that can be shown on the homologation label

⁽³⁾ Please refer to the end of this section

IMPORTANT

For safety reasons, please note that the homologation of the following competition seat, whatever the validity deadline, is withdrawn **with immediate effect**.

Manufacturer: **CORBEAU SEATS**

Model: **Revolution**

Homologation n° : **.CS.994.00**

As this seat **can no longer be considered as complying with the standard FIA 8855-1999 Competition Seats**, its use is prohibited in all cases in which compliance with the above-mentioned standards is mandatory.

IMPORTANT

For safety reasons, please note that the homologation of the following competition seat, whatever the validity deadline, is withdrawn **with immediate effect**.

Manufacturer: **RECARO AUTOMOTIVE GMBH & CO. KG**

Model: **Pole position**

Homologation n° : **.CS.997.00**

As this seat **can no longer be considered as complying with the standard FIA 8855-1999 Competition Seats**, its use is prohibited in all cases in which compliance with the above-mentioned standards is mandatory.

⁽¹⁾ The homologation end date represents the final date on which the products may be manufactured

⁽²⁾ The validity of the product must always be that which is indicated on the product homologation label. The dates in this column are the latest possible dates that can be shown on the homologation label

⁽³⁾ Please refer to the end of this section

IMPORTANT

For safety reasons, please note that the homologation of the following competition seat, whatever the validity deadline, is withdrawn **with immediate effect**.

Manufacturer: **CORBEAU SEATS**

Model: **Sprint**

Homologation n° : **CS.053.02**

As this seat **can no longer be considered as complying with the standard FIA 8855-1999 Competition Seats**, its use is prohibited in all cases in which compliance with the above-mentioned standards is mandatory.

IMPORTANT

For safety reasons, please note that the homologation of the following competition seat, whatever the validity deadline, is withdrawn **with immediate effect**.

Manufacturer: **BIMARCO**

Model: **EXPERT**

Homologation n° : **CS.057.02**

As this seat **can no longer be considered as complying with the standard FIA 8855-1999 Competition Seats**, its use is prohibited in all cases in which compliance with the above-mentioned standards is mandatory.

⁽¹⁾ The homologation end date represents the final date on which the products may be manufactured

⁽²⁾ The validity of the product must always be that which is indicated on the product homologation label. The dates in this column are the latest possible dates that can be shown on the homologation label

⁽³⁾ Please refer to the end of this section

IMPORTANT

For safety reasons, please note that the homologation of the following competition seat, whatever the validity deadline, is withdrawn **with immediate effect**.

Manufacturer: **RECARO AUTOMOTIVE GMBH & CO. KG**

Model: **Profi SPG XL**

Homologation n° : **CS.086.04**

As this seat **can no longer be considered as complying with the standard FIA 8855-1999 Competition Seats**, its use is prohibited in all cases in which compliance with the above-mentioned standards is mandatory.

IMPORTANT

For safety reasons, please note that the homologation of the following competition seat, whatever the validity deadline, is withdrawn **with immediate effect**.

Manufacturer: **ROSSI SPORTS**

Model: **Professional II**

Homologation n° : **CS.133.05**

As this seat **can no longer be considered as complying with the standard FIA 8855-1999 Competition Seats**, its use is prohibited in all cases in which compliance with the above-mentioned standards is mandatory.

⁽¹⁾ The homologation end date represents the final date on which the products may be manufactured

⁽²⁾ The validity of the product must always be that which is indicated on the product homologation label. The dates in this column are the latest possible dates that can be shown on the homologation label

⁽³⁾ Please refer to the end of this section

IMPORTANT

For safety reasons, please note that the homologation of the following competition seat, whatever the validity deadline, is withdrawn **with immediate effect**.

Manufacturer: **ROSSI SPORTS**

Model: **Professional III**

Homologation n° : **CS.142.05**

As this seat **can no longer be considered as complying with the standard FIA 8855-1999 Competition Seats**, its use is prohibited in all cases in which compliance with the above-mentioned standards is mandatory.

IMPORTANT

For safety reasons, please note that the homologation of the following competition seat, whatever the validity deadline, is withdrawn **with immediate effect**.

Manufacturer: **GP-RACE EUROPE S.L.**

Model: **TOP RALLY**

Homologation n° : **CS.159.06**

As this seat **can no longer be considered as complying with the standard FIA 8855-1999 Competition Seats**, its use is prohibited in all cases in which compliance with the above-mentioned standards is mandatory.

⁽¹⁾ The homologation end date represents the final date on which the products may be manufactured

⁽²⁾ The validity of the product must always be that which is indicated on the product homologation label. The dates in this column are the latest possible dates that can be shown on the homologation label

⁽³⁾ Please refer to the end of this section

IMPORTANT

For safety reasons, please note that the homologation of the following competition seat, whatever the validity deadline, is withdrawn **with immediate effect**.

Manufacturer: **NICK COMPETICION**

Model: **EFE - UNO**

Homologation n° : **CS.195.07**

As this seat **can no longer be considered as complying with the standard FIA 8855-1999 Competition Seats**, its use is prohibited in all cases in which compliance with the above-mentioned standards is mandatory.

IMPORTANT

For safety reasons, please note that the homologation of the following competition seat, whatever the validity deadline, is withdrawn **with immediate effect**.

Manufacturer: **GP-RACE EUROPE S.L.**

Model: **TOP CIRCUIT**

Homologation n° : **CS.207.08**

As this seat **can no longer be considered as complying with the standard FIA 8855-1999 Competition Seats**, its use is prohibited in all cases in which compliance with the above-mentioned standards is mandatory.

⁽¹⁾ The homologation end date represents the final date on which the products may be manufactured

⁽²⁾ The validity of the product must always be that which is indicated on the product homologation label. The dates in this column are the latest possible dates that can be shown on the homologation label

⁽³⁾ Please refer to the end of this section

IMPORTANT

For safety reasons, please note that the homologation of the following competition seat, whatever the validity deadline, is withdrawn **with immediate effect**.

Manufacturer: **GP-RACE EUROPE S.L.**

Model: **TOP RALLY LIGHT**

Homologation n° : **CS.208.08**

As this seat **can no longer be considered as complying with the standard FIA 8855-1999 Competition Seats**, its use is prohibited in all cases in which compliance with the above-mentioned standards is mandatory.

IMPORTANT

For safety reasons, please note that the homologation of the following competition seat, whatever the validity deadline, is withdrawn **with immediate effect**.

Manufacturer: **BORDER MOTORSEATS INDUSTRIAL CO, LTD**

Model: **SP-4C**

Homologation n° : **CS.213.08**

As this seat **can no longer be considered as complying with the standard FIA 8855-1999 Competition Seats**, its use is prohibited in all cases in which compliance with the above-mentioned standards is mandatory.

⁽¹⁾ The homologation end date represents the final date on which the products may be manufactured

⁽²⁾ The validity of the product must always be that which is indicated on the product homologation label. The dates in this column are the latest possible dates that can be shown on the homologation label

⁽³⁾ Please refer to the end of this section