

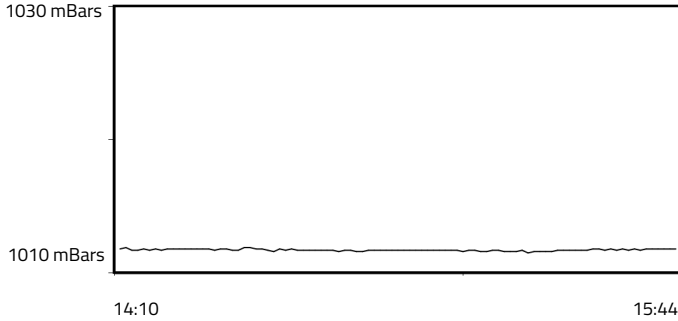


FORMULA 1 ARAMCO JAPANESE GRAND PRIX 2026 - Suzuka

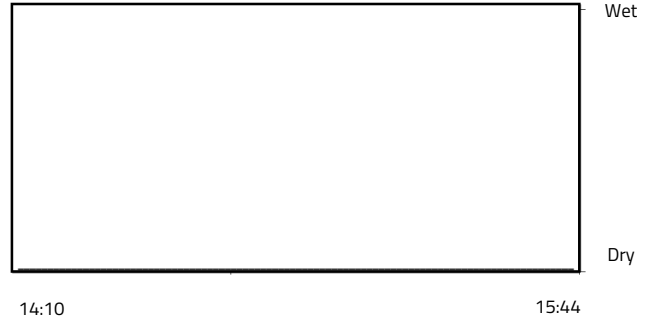
Weather Report - Sunday 29 March 2026

AIR PRESSURE

Maximum: 1011.9 mBars Minimum: 1011.5 mBars

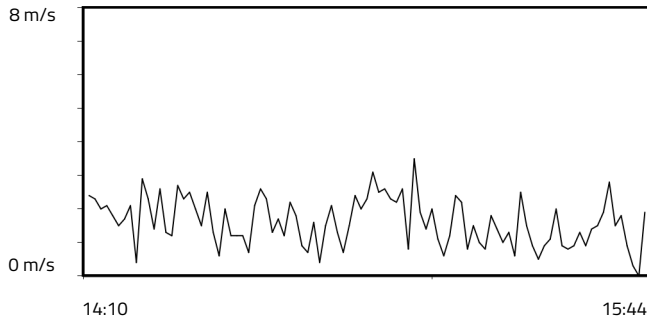


RAINFALL

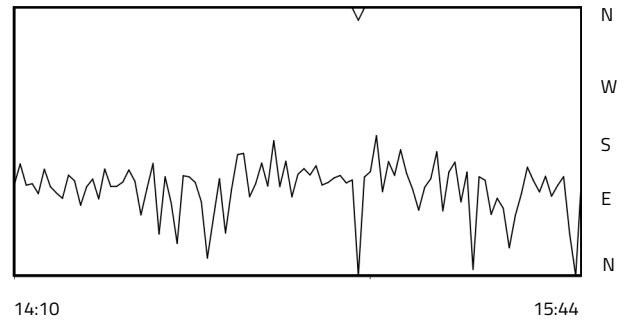


WIND SPEED

Maximum: 3.5 m/s Minimum: 0.0 m/s

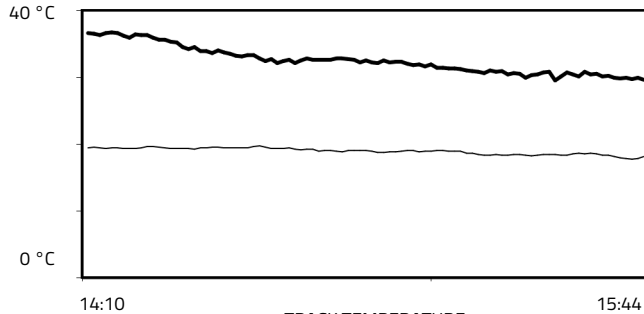


WIND DIRECTION



TEMPERATURE

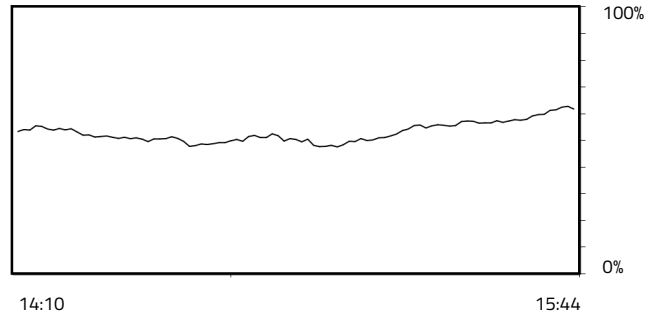
Air Maximum: 19.8°C Air Minimum: 17.8°C
Track Maximum: 36.8°C Track Minimum: 29.6°C



— TRACK TEMPERATURE
— AIR TEMPERATURE

RELATIVE HUMIDITY

Maximum: 62.8% Minimum: 47.6%



Weather Data Supplied by FIA