



# FORMULA 1 ARAMCO JAPANESE GRAND PRIX 2026 - Suzuka

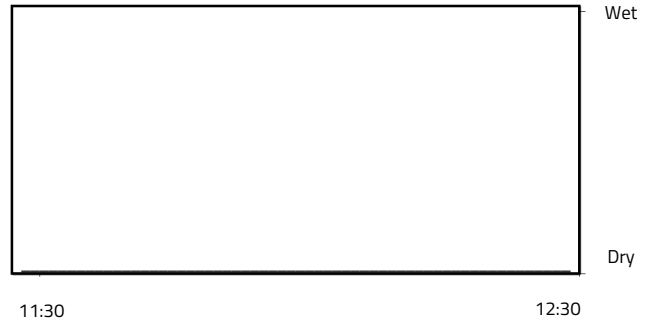
## Weather Report - Saturday 28 March 2026

### AIR PRESSURE

Maximum: 1010.5 mBars Minimum: 1009.9 mBars

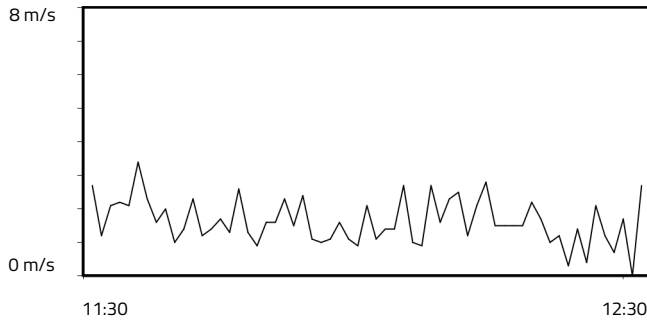


### RAINFALL

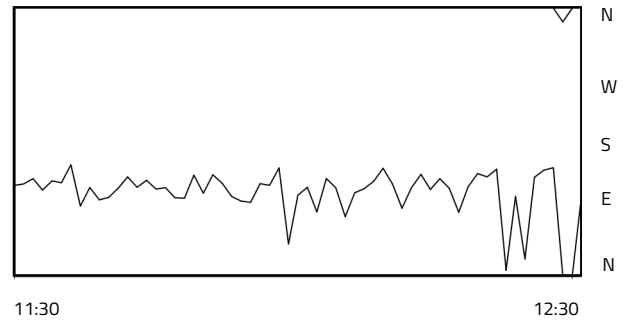


### WIND SPEED

Maximum: 3.4 m/s Minimum: 0.0 m/s

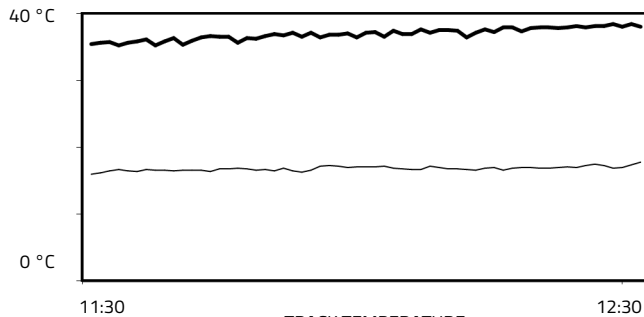


### WIND DIRECTION



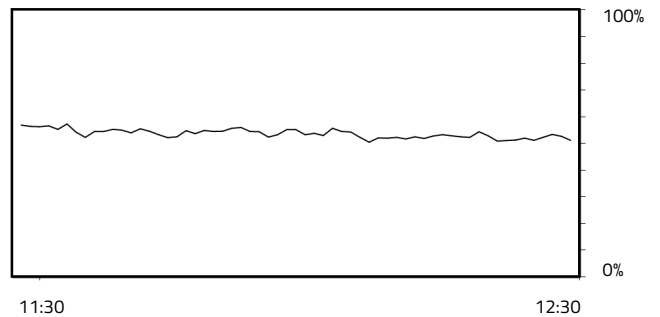
### TEMPERATURE

Air Maximum: 17.8°C Air Minimum: 16°C  
Track Maximum: 38.5°C Track Minimum: 35.3°C



### RELATIVE HUMIDITY

Maximum: 57.3% Minimum: 50.5%



— TRACK TEMPERATURE  
— AIR TEMPERATURE

Weather Data Supplied by FIA