



DECISION OF THE ENDURANCE COMMITTEE



To: Teams Manufacturers
Category: LM P1 LM P2 LM GTE Pro LM GTE Am
Decision N°: 16-D0004-LMP1-H-Amended 3
Date: 13/06/2016
Re: Refuelling – LMP1-H

Mission concerned

Article: Appendix A

- 2016 FIA World Endurance Championship Sporting Regulations
 2016 Technical Regulations for Prototypes LMP1
 Internal Regulations of the FIA Endurance Commission

Decision

Following:

- the shared intention to equalize the refuelling time of full tank of LMP1 Hybrids Diesel versus Gasoline
- the dedicated tests achieved on March 3rd,
- the co-signed report of the tests,

we feel necessary to summarize by the following drawings the functional dimensions which will be mandatory for 2016 LMP1-H refuelling equipment.

Amended on 06/04/2016:

Following additional consideration about functional details on the drawings, please find this Amended version of the Endurance Committee decision (mention of diameters, general tolerances, some not mandatory details ...)

Amended on 13/04/2016:

- 1) It isn't allowed to add any parts inside the prescribed rigid section and or inside the hose
- 2) Only a standard, not modified STAUBLI refuelling nozzle can be used.

Amended on 13/06/2016:

Strict selection of functional dimensions for outflow

Please find below the amended technical drawings with locally adapted tolerances

Period of validity/application of the decision

This decision comes into effect:

- with immediate application
 from:
 from the following event :

And is applicable:

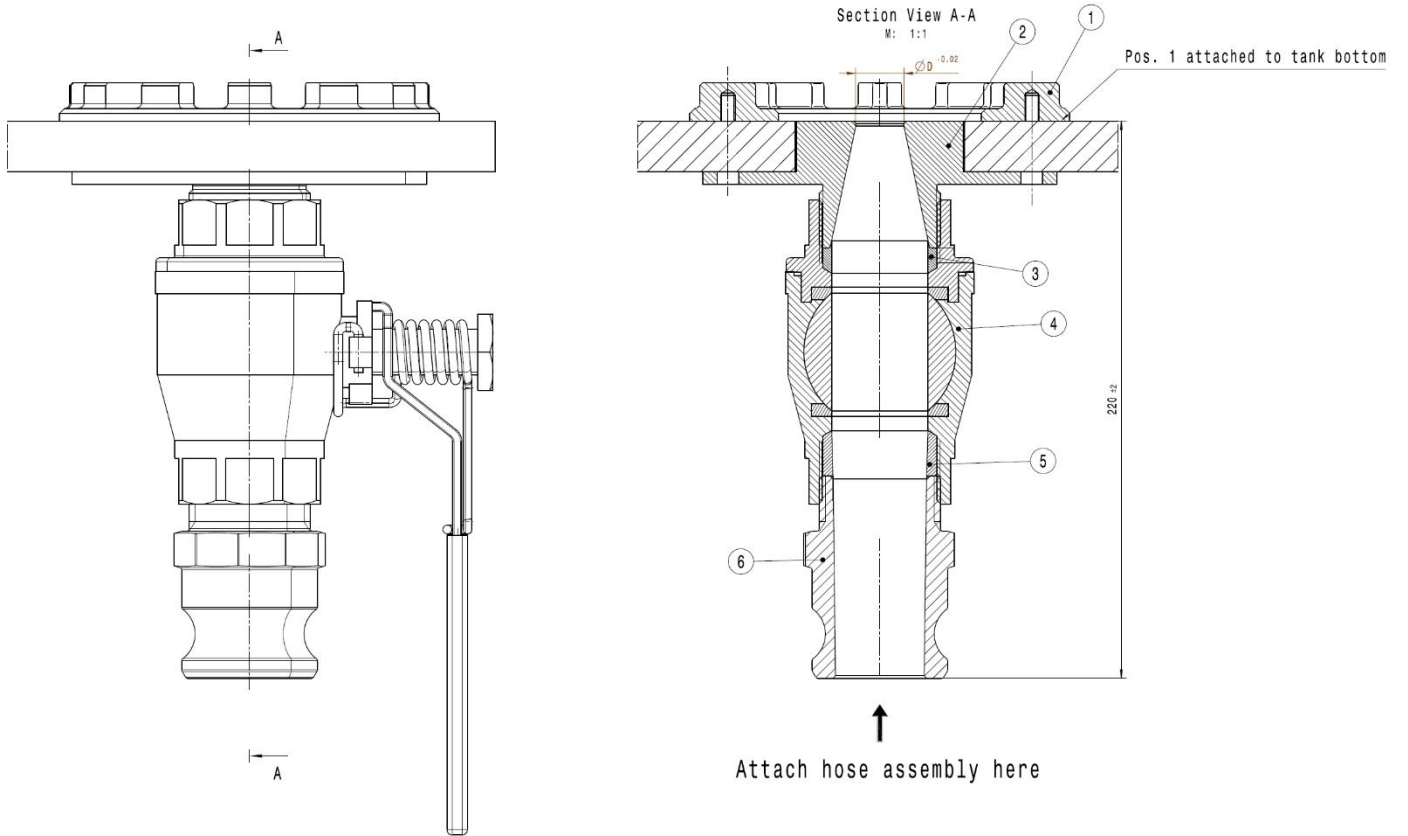
- until further notice
 for the above-mentioned event(s) only

Committee Members

Denis CHEVRIER

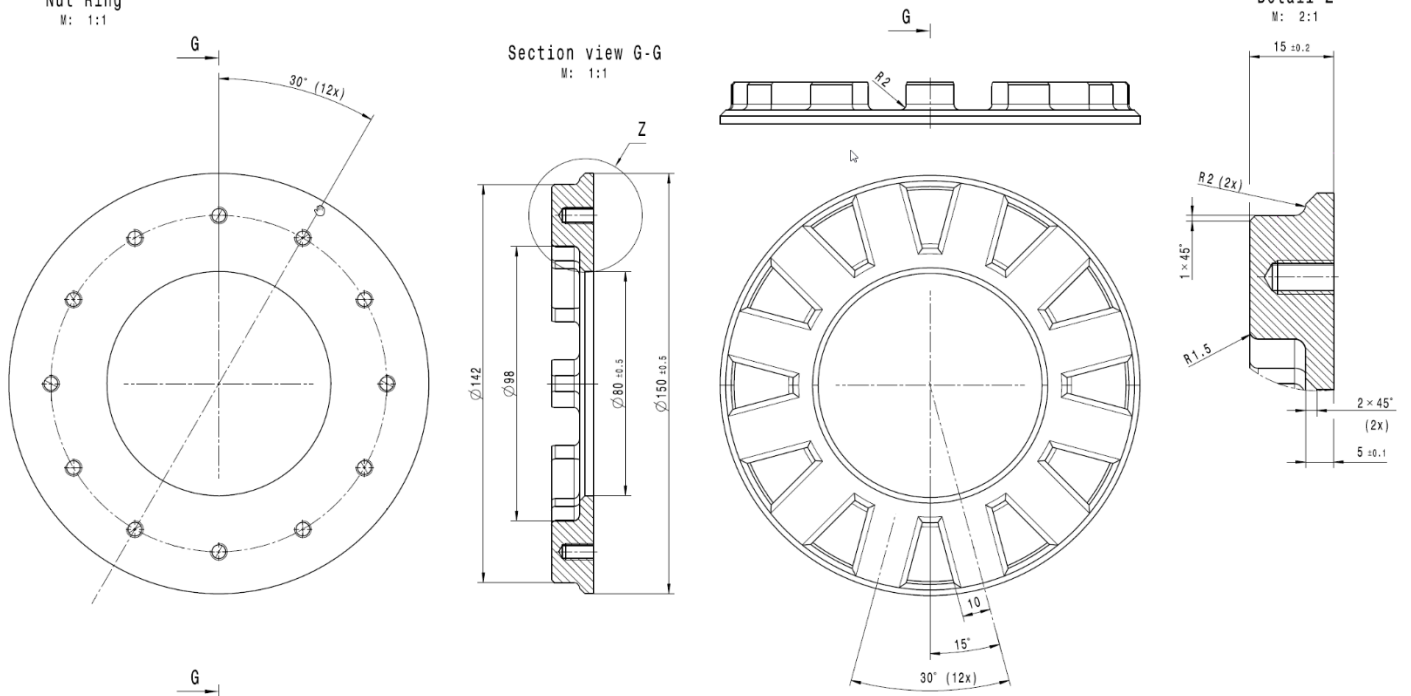
Vincent BEAUMESNIL

GENERAL OVERVIEW



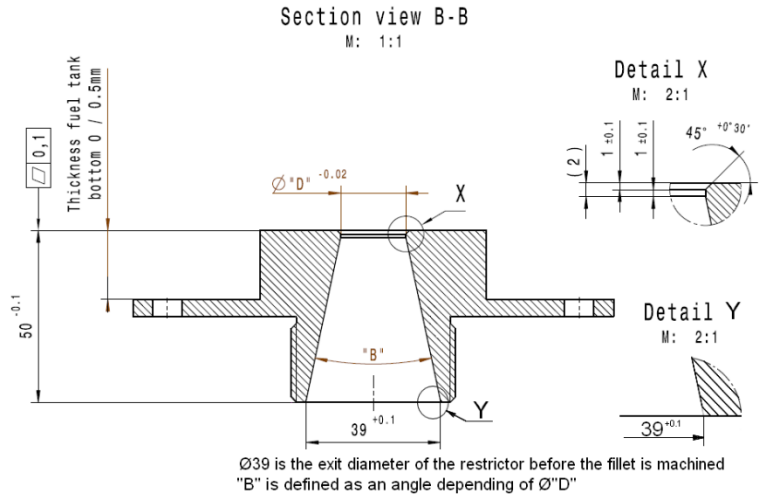
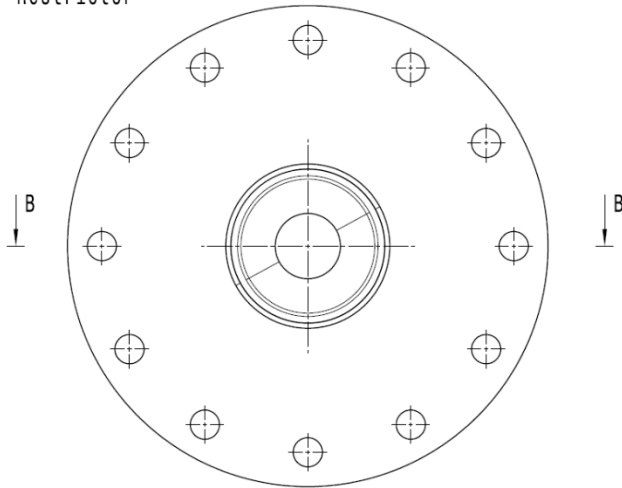
① NUT RING

Pos. 1:
Nut Ring
M: 1:1



② RESTRICTOR

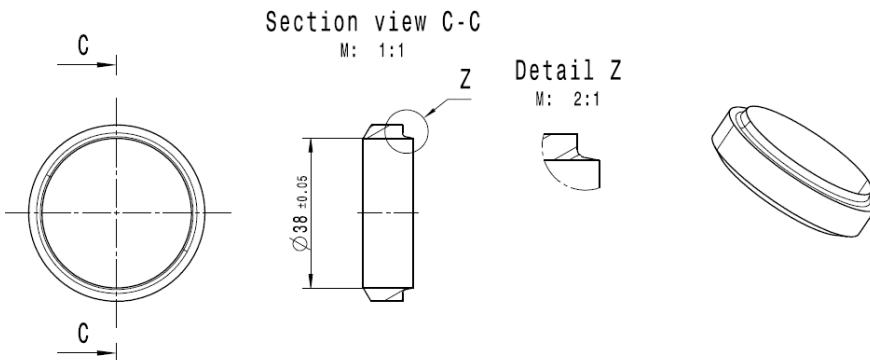
Pos. 2:
Restrictor



D [mm]	Comment
19.00	Diesel LM 2016
22.45	Petrol WEC cold / warm 2016
20.75	Diesel WEC warm 2016
20.80	Diesel WEC cold 2016
20.50	Petrol LM 2016

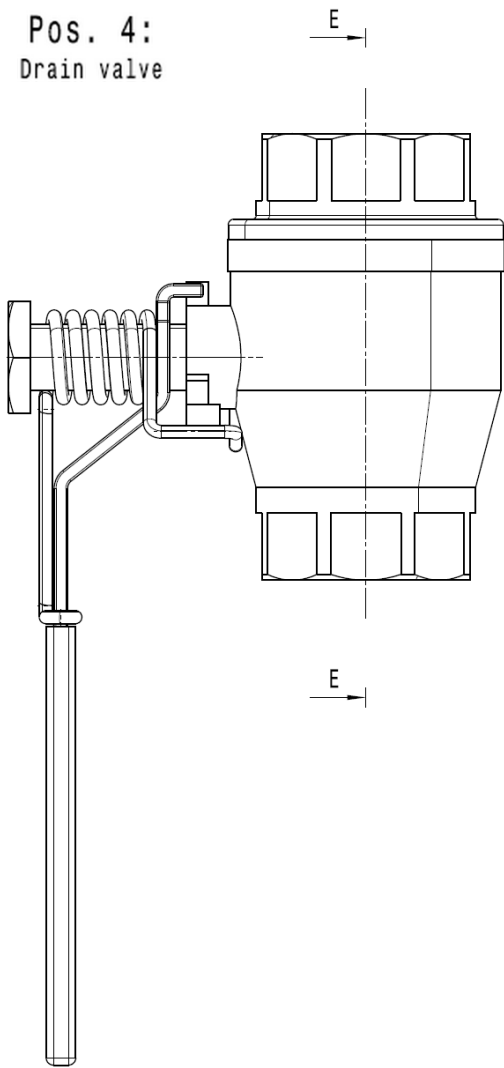
③ ADAPTOR RING

Pos. 3:
Adaptor ring

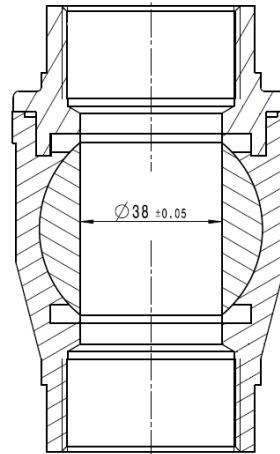


④ VALVE

Pos. 4:
Drain valve

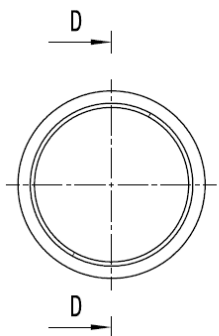


Section view E-E
M: 1:1

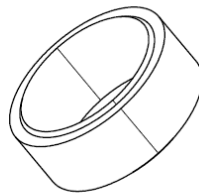
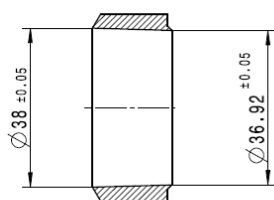


⑤ ADAPTOR RING

Pos. 5:
Adaptor ring

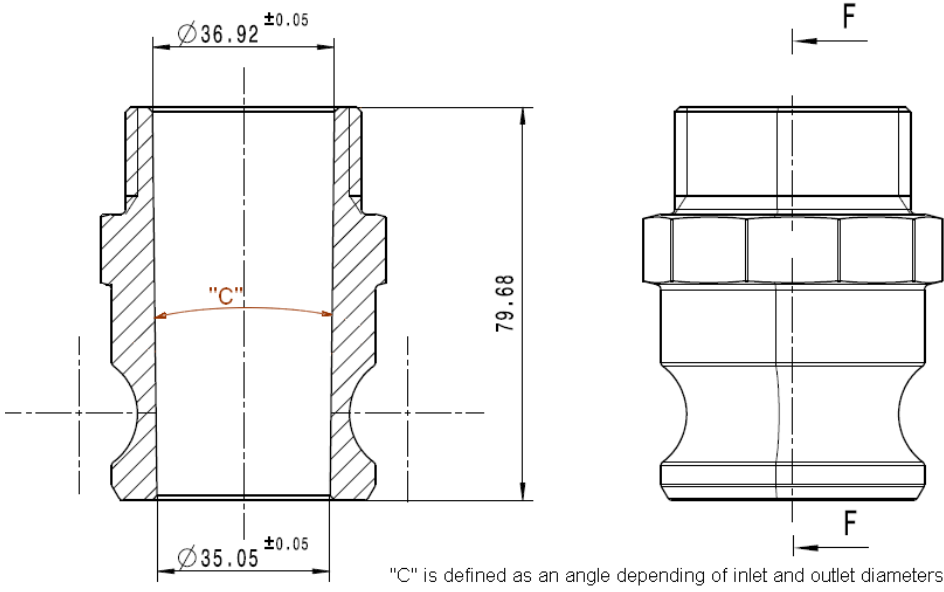


Section view D-D
M: 1:1

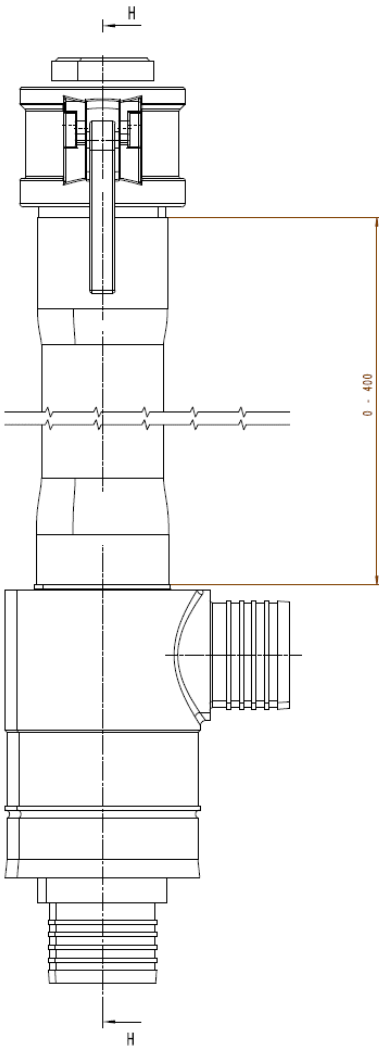


⑥ KAMLOCK

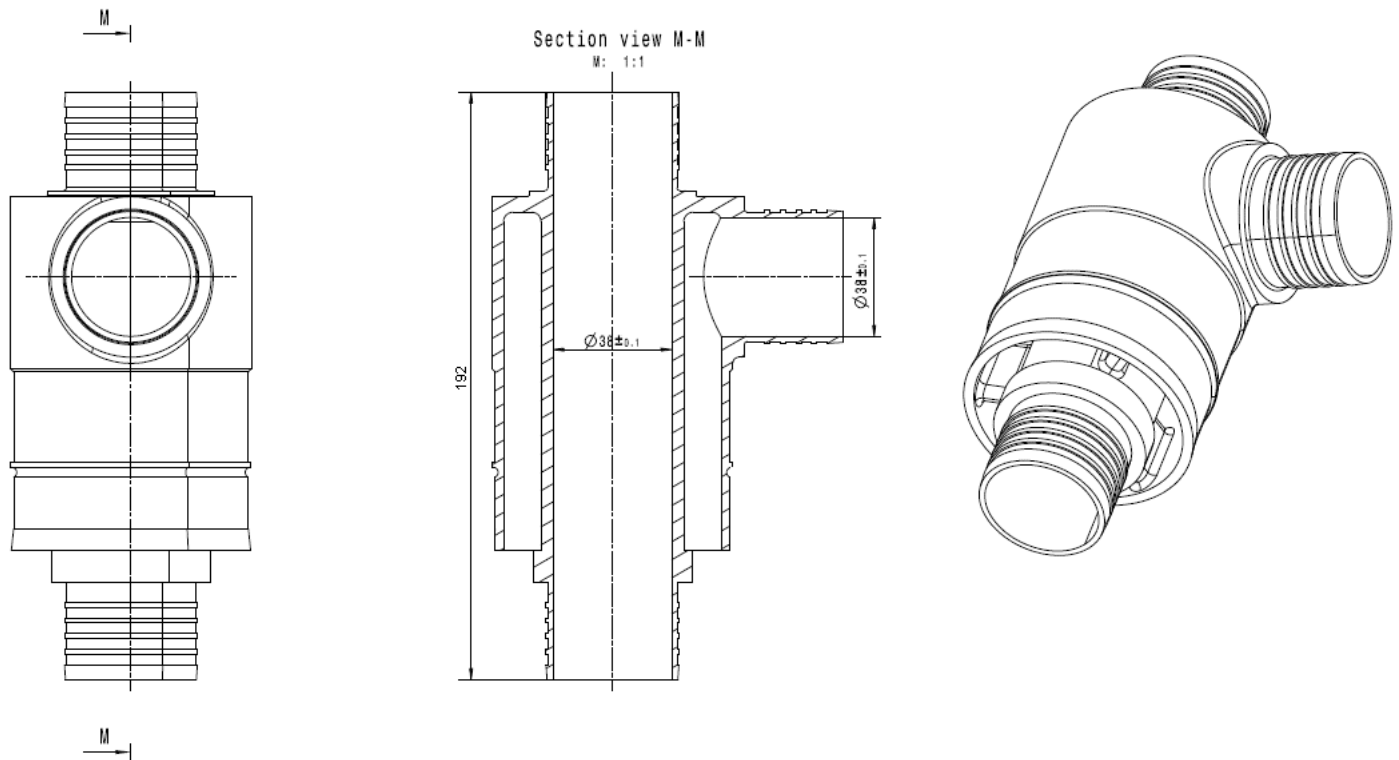
Pos. 6: Section view F-F
Kamloc adaptor M: 1:1



HOSE ASSEMBLY



DIVISOR



8/ GENERAL TOLERANCE

For all drawings, if no tolerance is specified please use norm *ISO 2768 fH*.

Any decision taken by the Endurance Committee is not subject to appeal, in accordance with Article 4.11.2 b of the WEC Sporting Regulations.

This decision is available on the following websites:

- <http://www.fia.com/events/world-endurance-championship/season-2016/fia-endurance-committee>
- <http://sport.lemans.org/login.php>