



## DECISION OF THE ENDURANCE COMMITTEE



To: ☒ Teams ☒ Manufacturers  
Category: ☒ LM P1 ☐ LM P2 ☐ LM GTE Pro ☐ LM GTE Am  
Decision N°: **16-D0004-LMP1-H-Amended 2**  
Date: **13/04/2016**  
Re: Refuelling – LMP1-H

### Mission concerned

Article: Appendix A

- ☐ 2016 FIA World Endurance Championship Sporting Regulations  
☒ **2016 Technical Regulations for Prototypes LMP1**  
☐ Internal Regulations of the FIA Endurance Commission

### Decision

Following:

- the shared intention to equalize the refuelling time of full tank of LMP1 Hybrids Diesel versus Gasoline
- the dedicated tests achieved on March 3<sup>rd</sup>,
- the co-signed report of the tests,

we feel necessary to summarize by the following drawings (below page 2,3 & 4) the functional dimensions which will be mandatory for 2016 LMP1-H refuelling equipment.

Amended on 06/04/2016:

Following additional consideration about functional details on the drawings, please find this Amended version of the Endurance Committee decision (mention of diameters, general tolerances, some not mandatory details , ...)

Clarification on 13/04/2016:

- 1) It isn't allowed to add any parts inside the prescribed rigid section and or inside the hose
- 2) Only a standard, not modified Staubli refuelling nozzle can be used.

Please find below the amended technical drawings with locally adapted tolerances

### Period of validity/application of the decision

This decision comes into effect:

- ☒ with immediate application  
☐ from:  
☐ from the following event :

And is applicable:

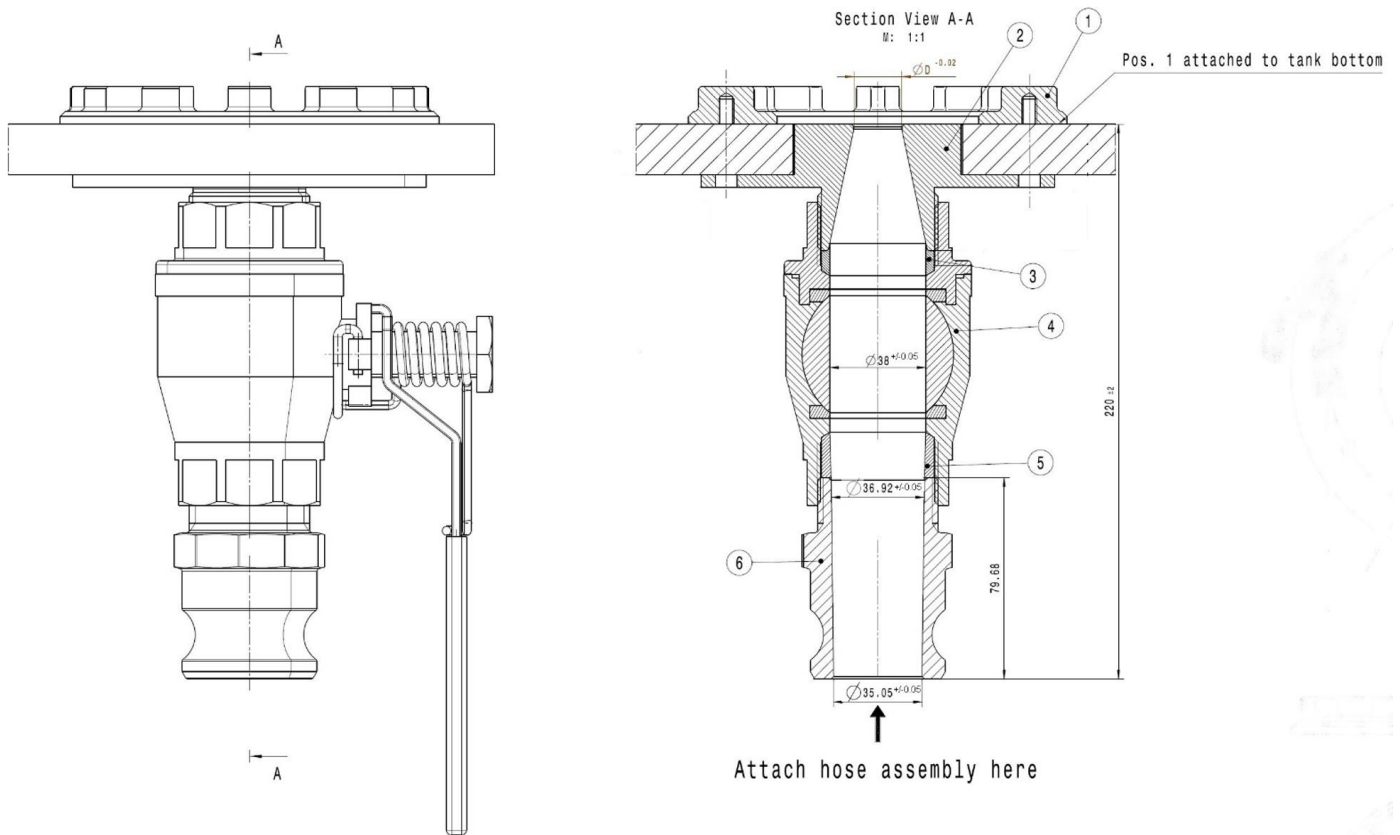
- ☒ until further notice  
☐ for the above-mentioned event(s) only

### Committee Members

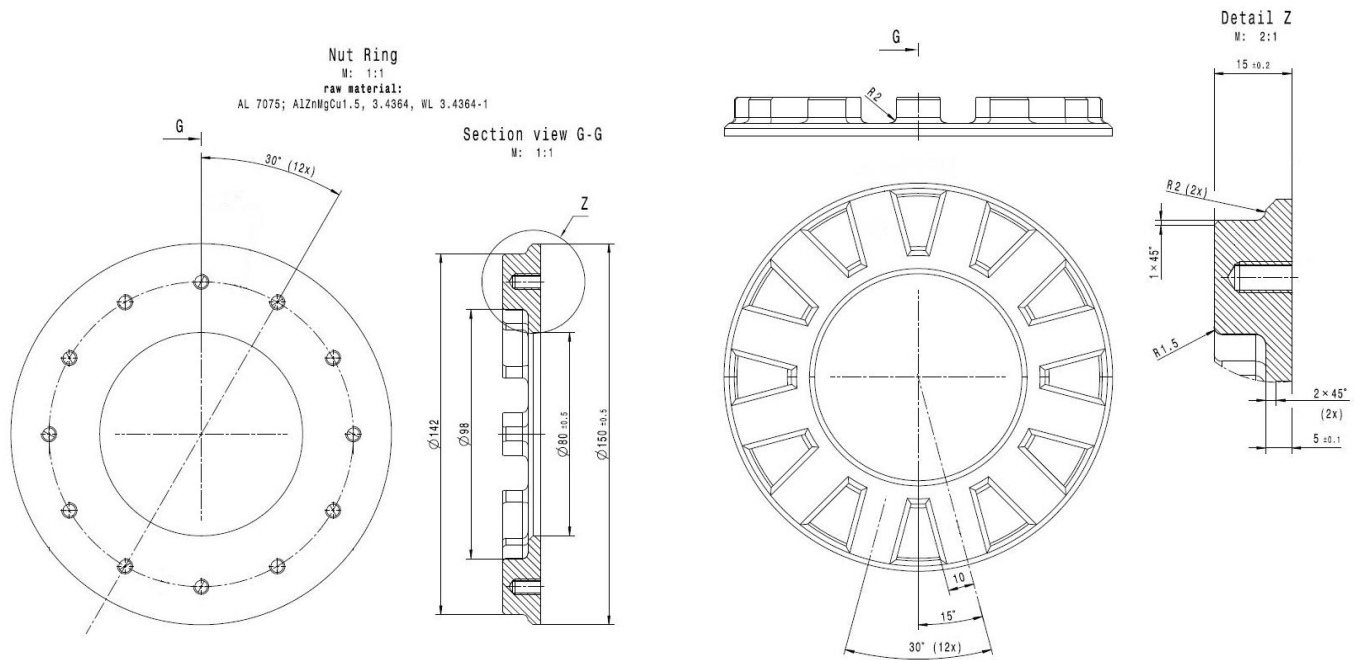
Denis CHEVRIER

Vincent BEAUMESNIL

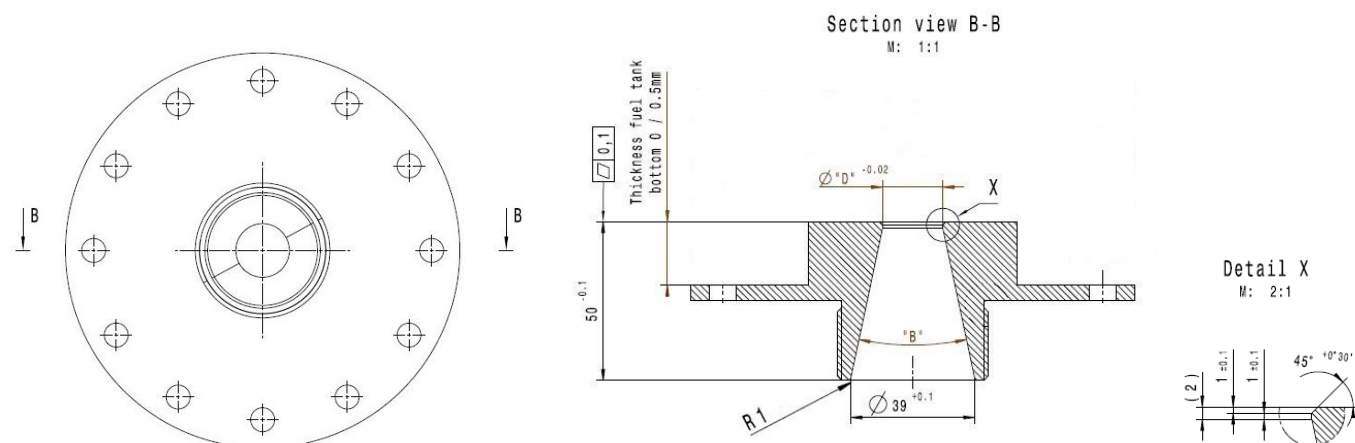
## 1/ GENERAL OVERVIEW



## 2/ NUT RING

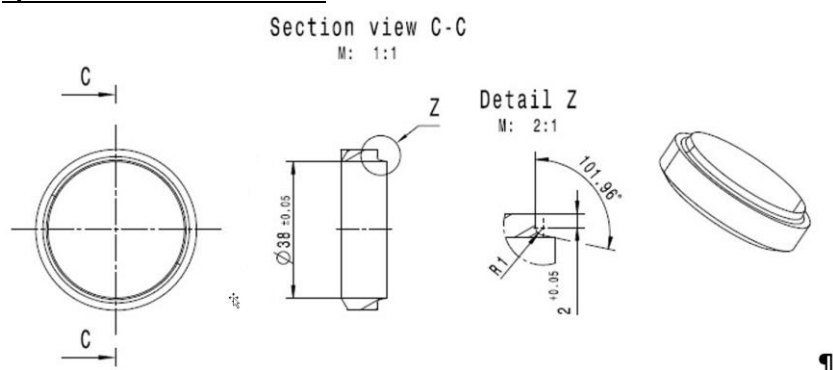


### 3/ RESTRICTOR

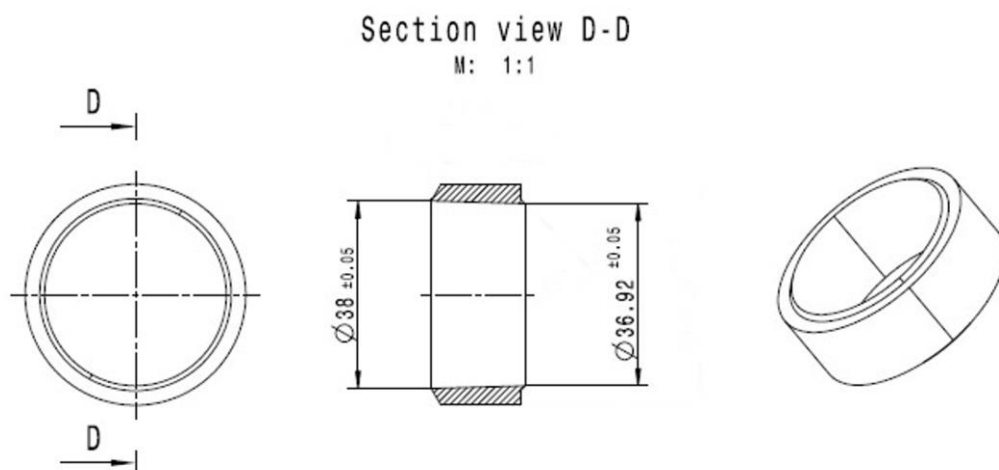


D [ mm ]	B [ ° ]	Comment
19.00	23.92	Diesel LM 2016
22.45	19.90	Petrol WEC cold / warm 2016
20.75	21.89	Diesel WEC warm 2016
20.80	21.83	Diesel WEC cold 2016
20.50	22.18	Petrol LM 2016

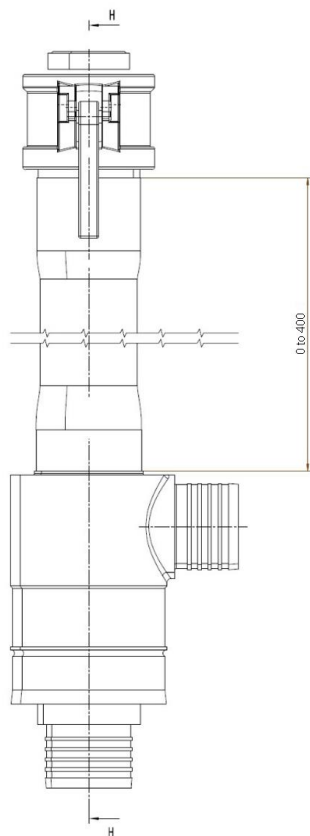
### 4/ ADAPTOR RING – Pos. 3



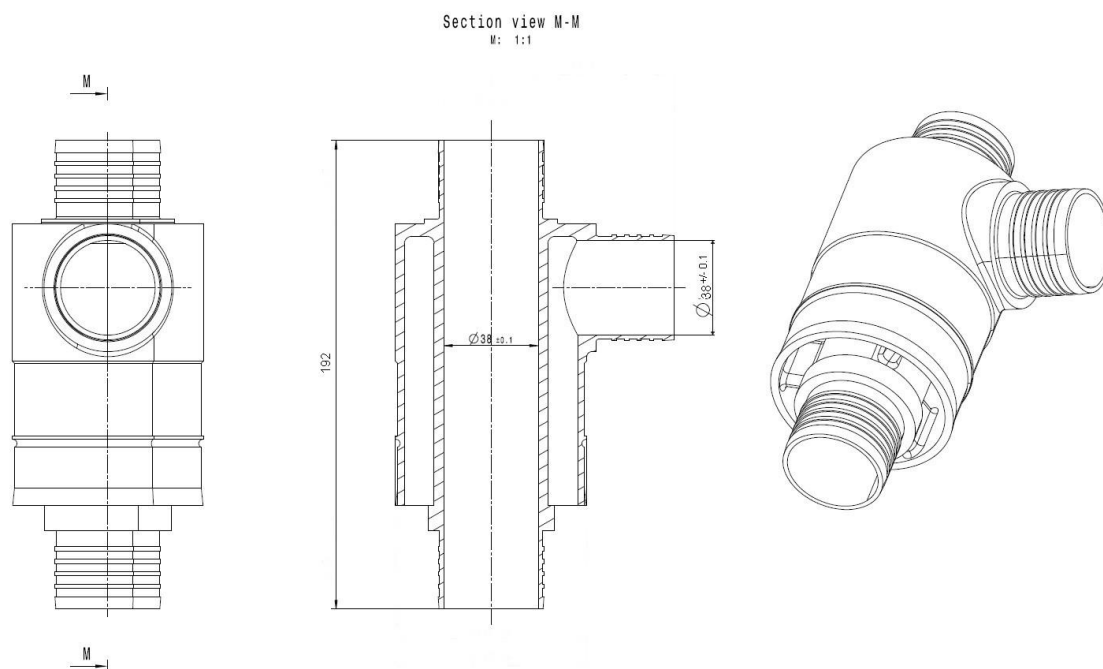
### 5/ ADAPTOR RING – Pos. 5



## 6/ HOSE ASSEMBLY



## 7/ DIVISOR



## 8/ GENERAL TOLERANCE

For all drawings, if no tolerance is specified please use norm ISO 2768.

**Any decision taken by the Endurance Committee is not subject to appeal, in accordance with Article 4.11.2 b of the WEC Sporting Regulations.**

This decision is available on the following websites:

- <http://www.fia.com/events/world-endurance-championship/season-2016/fia-endurance-committee>
- <http://sport.lemans.org/login.php>