



## DECISION OF THE ENDURANCE COMMITTEE



**To:**  Teams  Manufacturers  
**Category:**  LM P1  LM P2  LM GTE Pro  LM GTE Am  
**Decision N°:** 16-D0004-LMP1-H  
**Date:** 01/04/2016  
**Re:** Refuelling – LMP1-H

### Mission concerned

**Article:** Appendix A

- 2016 FIA World Endurance Championship Sporting Regulations  
 **2016 Technical Regulations for Prototypes LMP1**  
 Internal Regulations of the FIA Endurance Commission

### Decision

Following:

- the shared intention to equalize the refuelling time of full tank of LMP1 Hybrids Diesel versus Gasoline
- the dedicated tests achieved on March 3<sup>rd</sup>,
- the co-signed report of the tests,

we feel necessary to summarize by the following drawings (below page 2,3 & 4) the functional dimensions which will be mandatory for 2016 LMP1-H refuelling equipment.

### Period of validity/application of the decision

This decision comes into effect:

- with immediate application  
 from:  
 from the following event :

And is applicable:

- until further notice  
 for the above-mentioned event(s) only

### Committee Members

Denis CHEVRIER

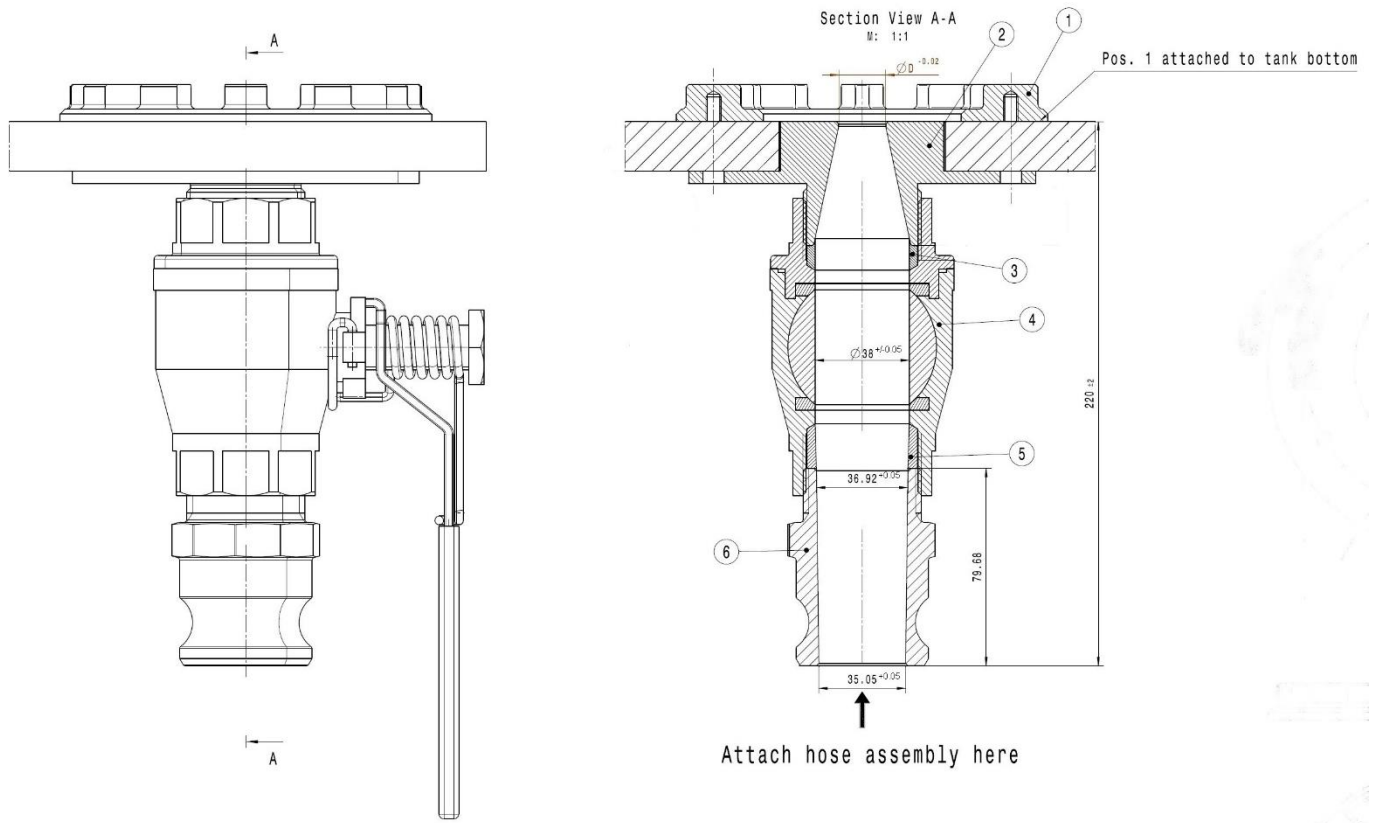
Vincent BEAUMESNIL

**Any decision taken by the Endurance Committee is not subject to appeal, in accordance with Article 4.11.2 b of the WEC Sporting Regulations.**

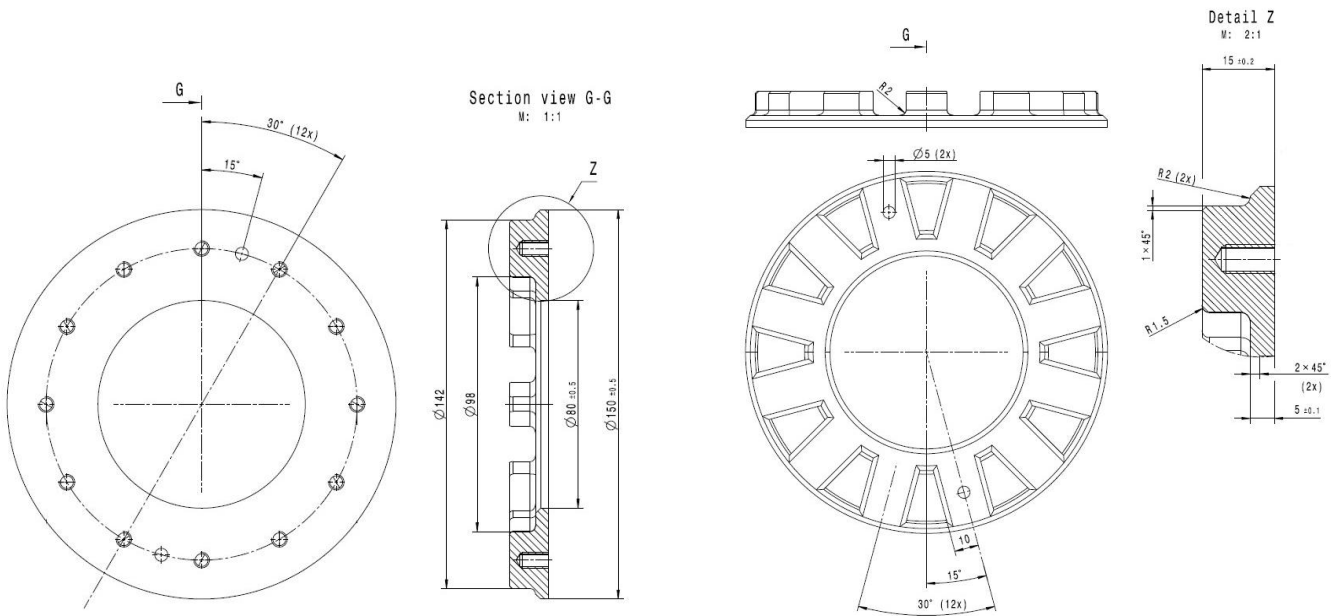
This decision is available on the following websites:

- <http://www.fia.com/events/world-endurance-championship/season-2016/fia-endurance-committee>
- <http://sport.lemans.org/login.php>

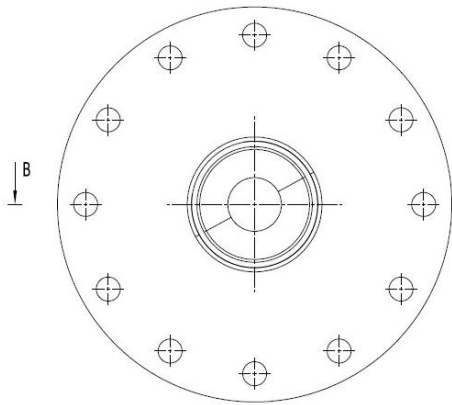
## 1/ GENERAL OVERVIEW



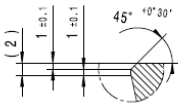
## 2/ NUT RING



### 3/ RESTRICTOR

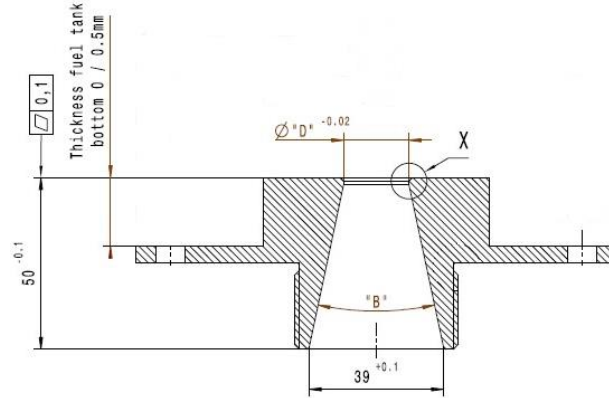


Detail X  
M: 2:1



Section view B-B

M: 1:1

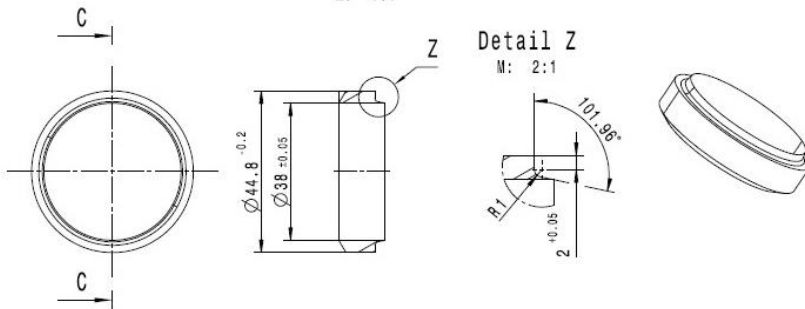


D [ mm ]	B [ ° ]	Comment
19.00	23.92	Diesel LM 2016
22.45	19.90	Petrol WEC cold / warm 2016
20.75	21.89	Diesel WEC warm 2016
20.80	21.83	Diesel WEC cold 2016
20.50	22.18	Petrol LM 2016

### 4/ ADAPTOR RING – Pos. 3

Section view C-C

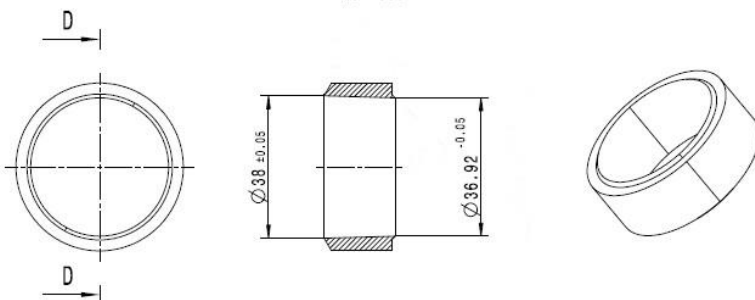
M: 1:1



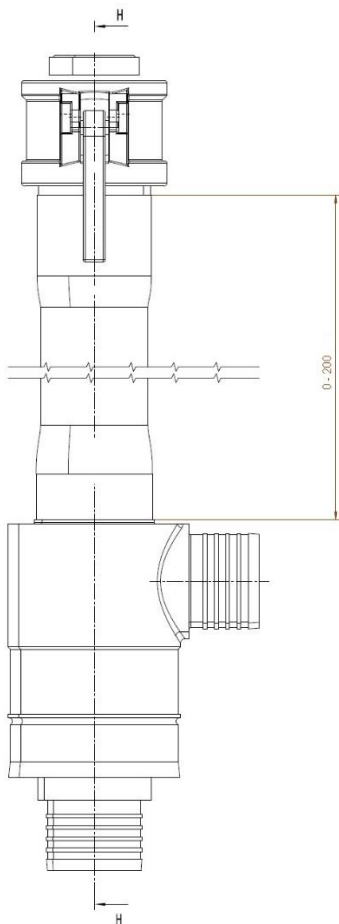
### 5/ ADAPTOR RING – Pos. 5

Section view D-D

M: 1:1



## 6/ HOSE ASSEMBLY



## 7/ DIVISOR

Section view M-M  
M: 1:1

